

GOLDSBORO, NORTH CAROLINA

RNAV (GPS) RWY 26

WAAS CH 95096 W26A	APCH CRS 261°	Rwy ldg TDZE Arprt Elev	11,760 109 109
---------------------------------	-------------------------	-------------------------------	---

(USAF)

SEYMOUR JOHNSON AFB (KGSB)

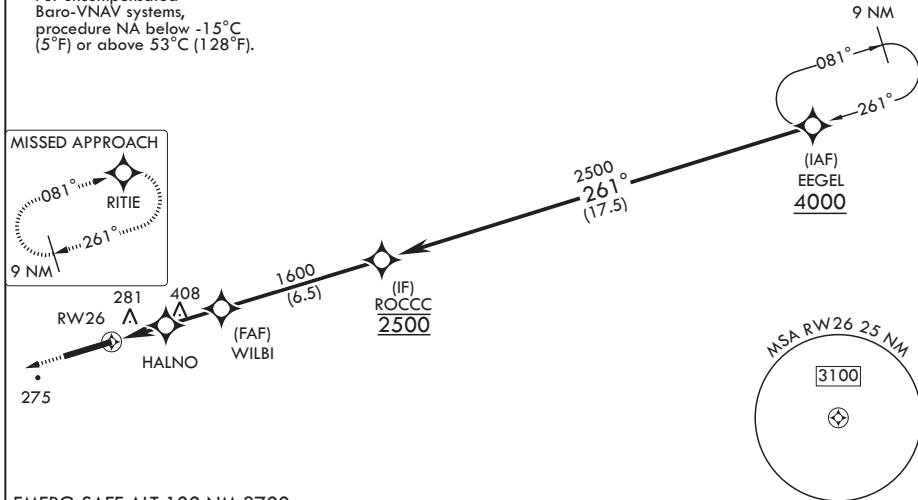
RNP APCH-GPS	ALSF-1	MISSED APPROACH: Climb to 2200 direct RITIE and hold.
<p>▼ * When ALS inop, increase RVR to 40, vis to 3/4 mile. ** When ALS, inop increase RVR to 60, vis to 1 1/8 miles. *** When ALS inop, increase CAT AB RVR to 55, vis to 1 mile; CAT CDE vis to 1 1/4 miles.</p>		

ATIS★ 317.625	APP CON 119.7 273.6 (111° -257°) 123.7 290.9 (258° -110°)	TOWER★ 126.25 370.875	GND CON 132.45 275.8
-------------------------	---	---------------------------------	--------------------------------

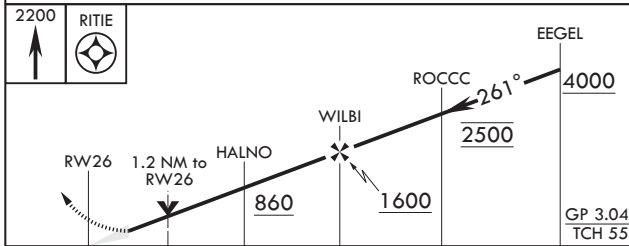
**** Circling NA N of Rwy 8-26.

For uncompensated Baro-VNAV systems, procedure NA below -15°C (5°F) or above 53°C (128°F).

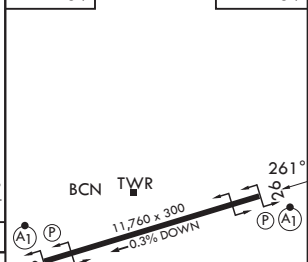
MISSED APPROACH



EMERG SAFE ALT 100 NM 3700



ELEV 109	TDZE 109
----------	----------



CATEGORY	A	B	C	D	E
LPV DA*	309/24		200	(200-1/2)	
LNAV/VNAV DA**	510/40		401	(500-3/4)	
LNAV MDA***	540/24	431 (500-1/2)	540/40	431	(500-3/4)
CIRCLING****	580-1 471 (500-1)	600-1 491 (500-1)	680-1 1/2 571 (600-1 1/2)	740-2 631 (700-2)	740-2 1/4 631 (700-2 1/4)

HIRL all rwys

GOLDSBORO, NORTH CAROLINA

35°20'N - 77°58'W

SEYMOUR JOHNSON AFB (KGSB)

Amdt 6 11JUL24

RNAV (GPS) RWY 26

SE-2, 14 MAY 2026 to 11 JUN 2026

SE-2, 14 MAY 2026 to 11 JUN 2026