

GOLDSBORO, NORTH CAROLINA

# RNAV (GPS) RWY 8

WAAS CH <b>63600</b> W08A	APCH CRS <b>081°</b>	Rwy ldg TDZE Arpt Elev	<b>11,760</b> <b>73</b> <b>109</b>
---------------------------------	-------------------------	------------------------------	--


(USAF)

SEYMOUR JOHNSON AFB (KGSB)

RNP APCH-GPS

▼ \* When ALS inop, increase RVR to 40, vis to ¾ mile.  
 \*\* When ALS inop, increase vis to 1 3/8 miles.  
 \*\*\* When ALS inop, increase CAT AB RVR to 55, vis to 1 mile; CAT CDE vis to 1 3/8 miles.

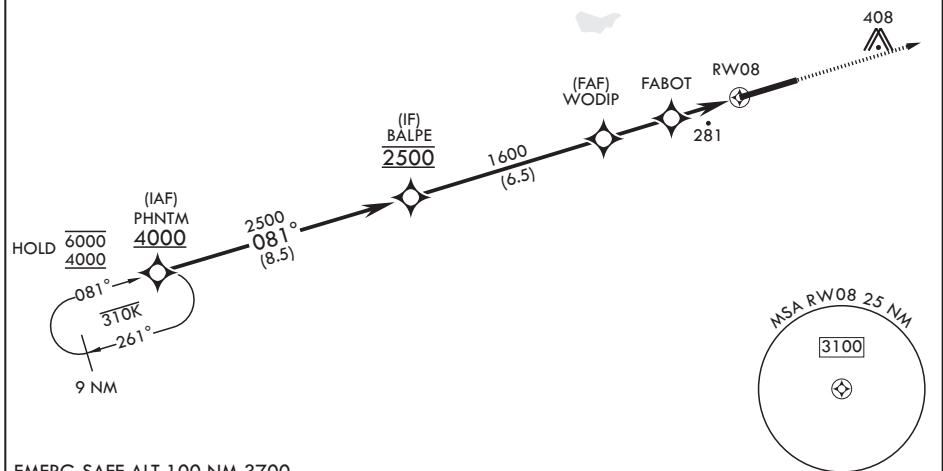
ALSF-1 MISSED APPROACH: Climb to 2300 direct ZILOB and hold.



ATIS* <b>317.625</b>	APP CON <b>119.7 273.6 (111° -257°)</b> <b>123.7 290.9 (258° -110°)</b>	TOWER* <b>126.25 370.875</b>	GND CON <b>132.45 275.8</b>
-------------------------	---	---------------------------------	--------------------------------

\*\*\*\* Circling NA N of RWY 8-26.

For uncompensated Baro-VNAV systems, procedure NA below -15°C (5°F) or above 54°C (130°F).



EMERG SAFE ALT 100 NM 3700

PHNTM 4000	BALPE 2500	WODIP	FABOT	RWY 8	2300 ZILOB	ELEV 109	TDZE 73
GP 3.00°				1.3 NM to RWY 08			
TCH 55		2.3 NM	2.3 NM				
CATEGORY	A	B	C	D	E		
LPV DA*	273/24		200	(200-½)			
LNAV/VNAV DA**	540/50		467	(500-1)			
LNAV MDA***	540/24	467 (500-½)	540/50	467	(500-1)		
CIRCLING****	580-1	600-1	680-1½	740-2	740-2¼		
	471 (500-1)	491 (500-1)	571 (600-1½)	631 (700-2)	631 (700-2¼)		
						HIRL all rwys	

GOLDSBORO, NORTH CAROLINA

35°20'N - 77°58'W

SEYMOUR JOHNSON AFB (KGSB)

Amdt 7 11JUL24

# RNAV (GPS) RWY 8

SE-2, 14 MAY 2026 to 11 JUN 2026

SE-2, 14 MAY 2026 to 11 JUN 2026