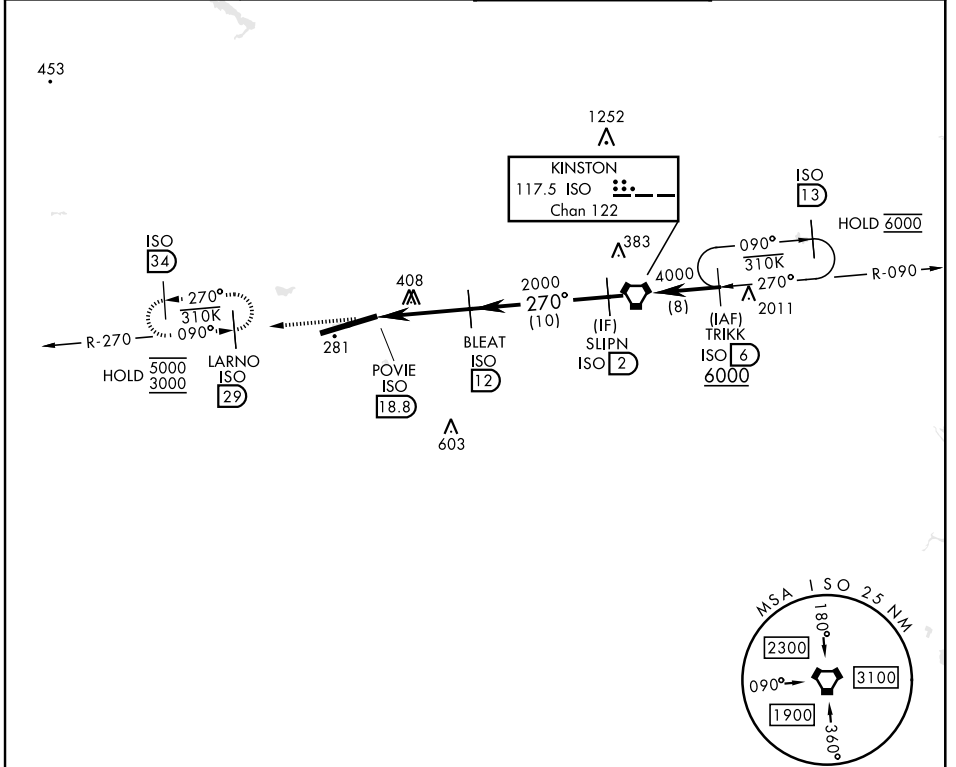


TACAN-A

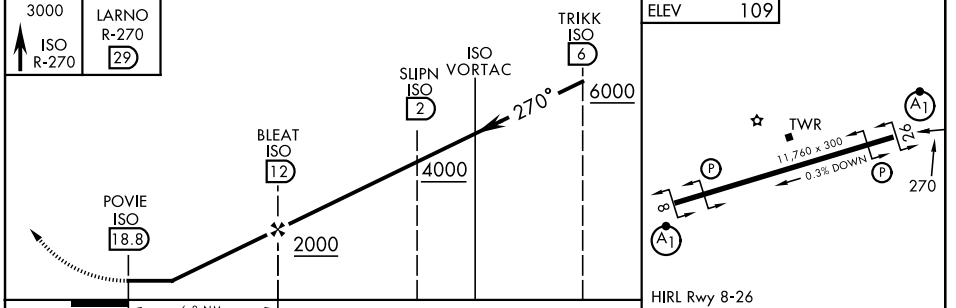
KINSTON ISO 117.5 Chan 122	APCH CRS 270°	Rwy Idg TDZE Arprt Elev N/A N/A 109	[USAF]	SEYMOUR JOHNSON AFB (KGSB)
--	-------------------------	---	--------	----------------------------

▼ Circling not authorized from Rwy 8 clockwise to Rwy 26.
 MISSED APPROACH: Climb to 3000 via ISO VORTAC R-270 to LARNO and hold; continue climb-in-hold to 3000.

ATIS ★ 317.625	APP CON 123.7 290.9 (258°-110°) 119.7 273.6 (111°-257°)	TOWER ★ 126.25 370.875	GND CON 132.45 275.8
--------------------------	---	----------------------------------	--------------------------------



EMERG SAFE ALT 100 NM 4100



CATEGORY	ELEV 109				
	A	B	C	D	E
CIRCLING	740-1	631 (700-1)	740-1¾ 631 (700-1¾)	740-2 631 (700-2)	740-2¼ 631 (700-2¼)
	FAF to MAP 6.8 NM				
	Knots	60	90	120	150
	Min:Sec	6:48	4:32	3:24	2:43

GOLDSBORO, NORTH CAROLINA 35° 20'N-77° 58'W SEYMOUR JOHNSON AFB (KGSB)

Amdt 1 29DEC22

TACAN-A

SE-2, 14 MAY 2026 to 11 JUN 2026

SE-2, 14 MAY 2026 to 11 JUN 2026