

WAAS CH <b>97606</b> <b>W27A</b>	APP CRS <b>273°</b>	Rwy Ldg TDZE Apt Elev	<b>6008</b> <b>826</b> <b>826</b>
--	------------------------	-----------------------------	---

# RNAV (GPS) RWY 27

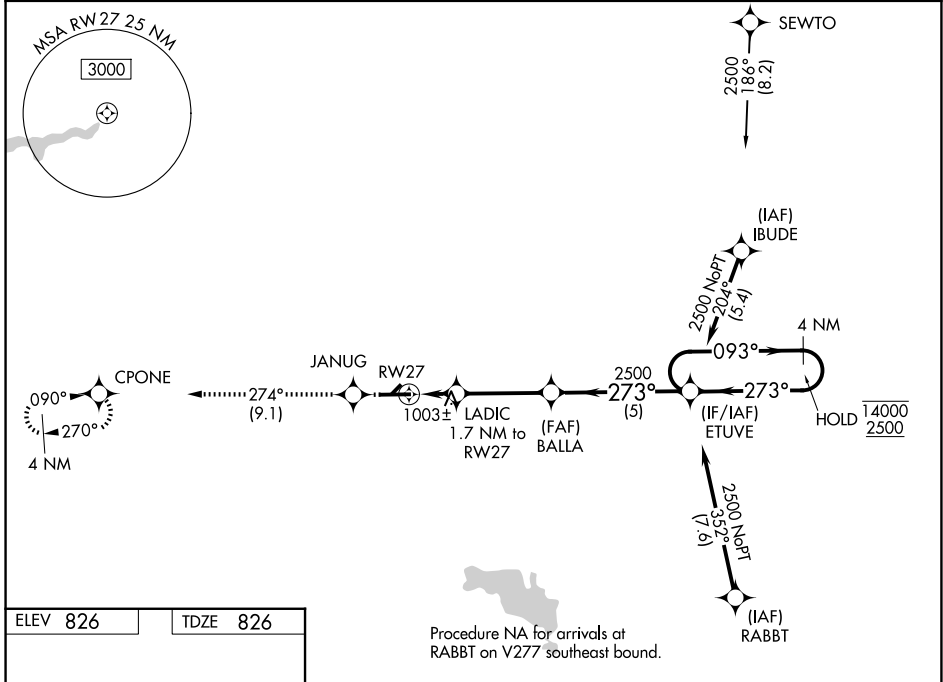
GOSHEN MUNI (GSH)

RNP APCH - GPS.

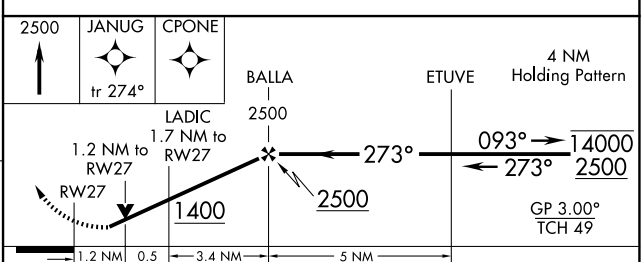
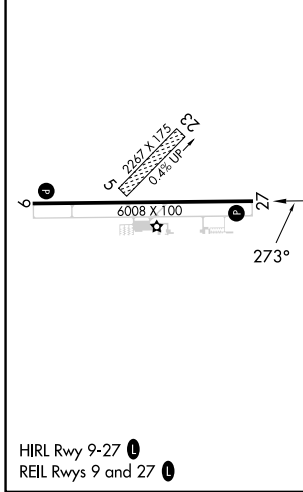
▼ Baro-VNAV and VDP NA when using ASW altimeter setting. For uncompensated Baro-VNAV systems, LNAV/VNAV NA below -16°C or above 54°C. Circling NA to Rwy 5 and 23. Rwy 27 helicopter visibility reduction below 3/4 SM NA. When local altimeter setting not received, use ASW altimeter setting and increase LPV DA to 1251 feet and all visibilities 1/2 SM. Increase LNAV/VNAV DA to 1346 feet. Increase all MDAs 40 feet and LNAV visibility Cat C/D 1/2 SM, and Circling visibility Cat D 1/4 SM.

MISSED APPROACH: Climb to 2500 direct JANUG and on 274° track to CPONE and hold.

ASOS <b>121.45</b>	SOUTH BEND APP CON * <b>132.05 257.8</b>	CLNC DEL <b>125.25</b>	UNICOM <b>123.05 (CTAF) 0</b>
-----------------------	---	---------------------------	----------------------------------



ELEV 826	TDZE 826
----------	----------



CATEGORY	A	B	C	D
LPV DA		1212-1 1/8	386 (400-1 1/8)	
LNAV/VNAV DA		1307-1 3/8	481 (500-1 3/8)	
LNAV MDA	1260-1	434 (500-1)	1260-1 1/4 434 (500-1 1/4)	1260-1 1/2 434 (500-1 1/2)
CIRCLING	1300-1 474 (500-1)	1320-1 494 (500-1)	1500-2 674 (700-2)	1560-2 1/4 734 (800-2 1/4)

EC-2, 14 MAY 2026 to 11 JUN 2026

EC-2, 14 MAY 2026 to 11 JUN 2026