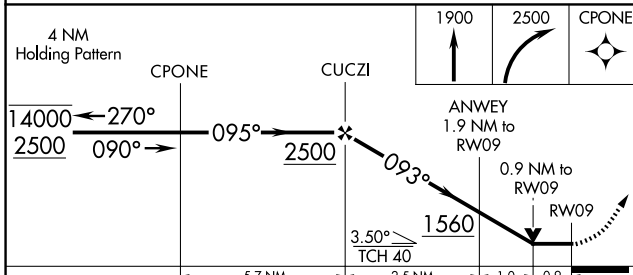
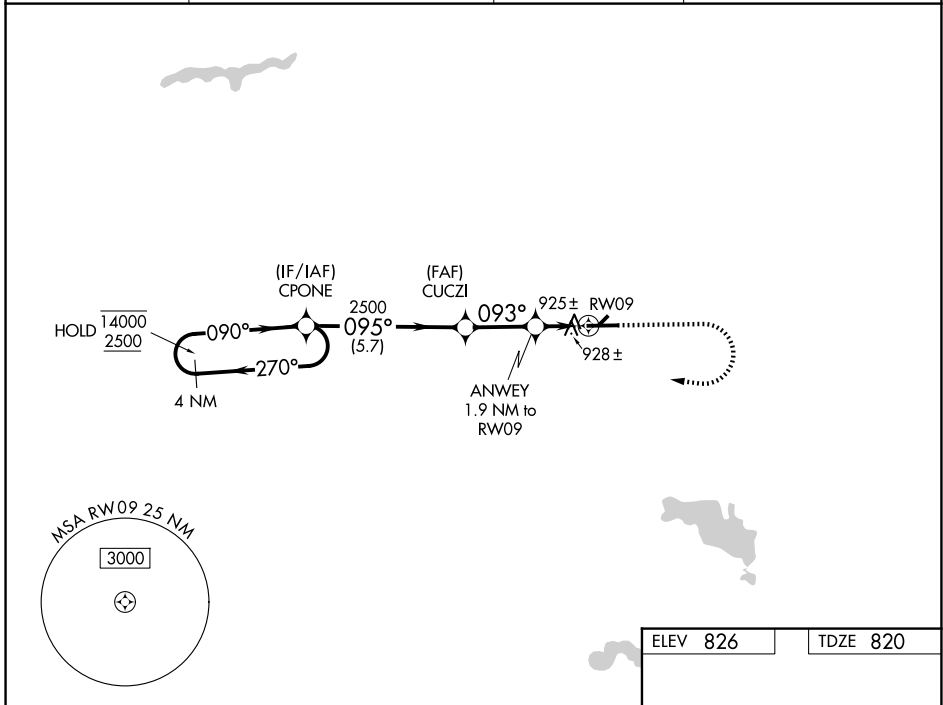


WAAS CH <b>69325</b> <b>W09A</b>	APP CRS <b>093°</b>	Rwy Ldg <b>6008</b> TDZE <b>820</b> Apt Elev <b>826</b>
--	------------------------	---

# RNAV (GPS) RWY 9

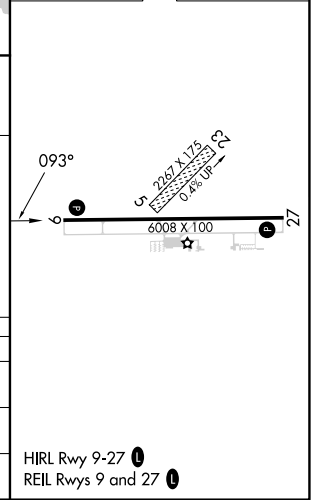
GOSHEN MUNI (GSH)

RNP APCH - GPS.			MISSED APPROACH: Climb to 1900 then climbing right turn to 2500 direct CPONE and hold.
<p>▼ Circling NA to Rwy 5 and 23. Rwy 9 helicopter visibility reduction below 3/4 SM NA.                  ▲ VDP NA when using ASW altimeter setting. When local altimeter setting not received, use ASW altimeter setting and increase all MDAs 40 feet; increase LP and LNAV visibility Cat C/D 1/2 SM and Circling visibility Cat D 1/4 SM.</p>			
ASOS <b>121.45</b>	SOUTH BEND APP CON* <b>132.05 257.8</b>	CLNC DEL <b>125.25</b>	UNICOM <b>123.05 (CTAF) 0</b>



ELEV 826	TDZE 820
----------	----------

CATEGORY	A	B	C	D
LP MDA		1180-1	360 (400-1)	
LNAV MDA		1200-1	380 (400-1)	
CIRCLING	1300-1 474 (500-1)	1320-1 494 (500-1)	1500-2 674 (700-2)	1560-2 1/4 734 (800-2 1/4)



HIRL Rwy 9-27 0  
REIL Rwy 9 and 27 0

EC-2, 14 MAY 2026 to 11 JUN 2026

EC-2, 14 MAY 2026 to 11 JUN 2026