

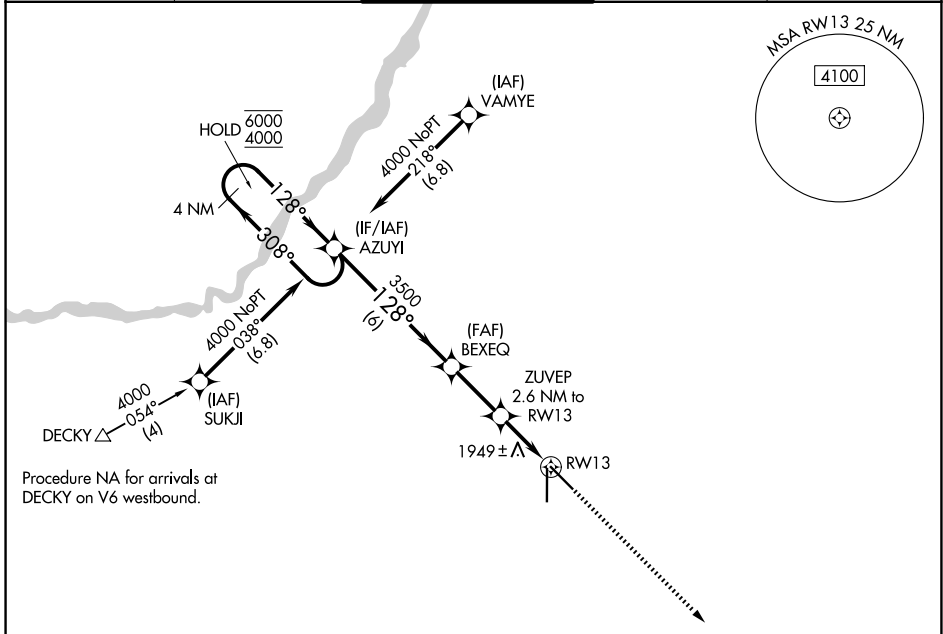
APP CRS	Rwy Ldg	<b>6608</b>
<b>128°</b>	TDZE	<b>1842</b>
	Apt Elev	<b>1847</b>

# RNAV (GPS) RWY 13

CENTRAL NEBRASKA RGNL (GRI)

RNP APCH - GPS.		MALS	MISSED APPROACH: Climb to 4100 direct AGEKY and hold.	

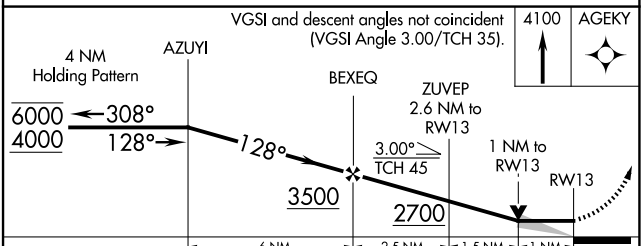
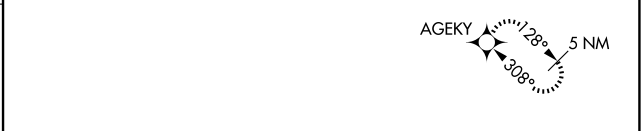
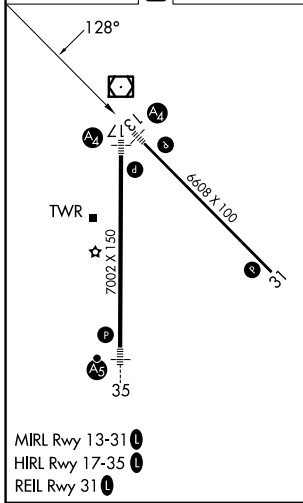
ATIS <b>127.4</b>	MINNEAPOLIS CENTER <b>119.4 278.8</b>	GRAND ISLAND TOWER * <b>118.2 (CTAF) 0 259.3</b>	GND CON <b>121.9 259.3</b>	UNICOM <b>122.95</b>
----------------------	--	---	-------------------------------	-------------------------



NC-2, 14 MAY 2026 to 11 JUN 2026

NC-2, 14 MAY 2026 to 11 JUN 2026

ELEV 1847	<b>D</b>	TDZE 1842
-----------	----------	-----------



CATEGORY	A	B	C	D
LNAV MDA	2200- <sup>3</sup> / <sub>4</sub> 358 (400- <sup>3</sup> / <sub>4</sub> )			
CIRCLING	2300-1	453 (500-1)	2400-1 <sup>1</sup> / <sub>2</sub> 553 (600-1 <sup>1</sup> / <sub>2</sub> )	2560-2 <sup>1</sup> / <sub>4</sub> 713 (800-2 <sup>1</sup> / <sub>4</sub> )