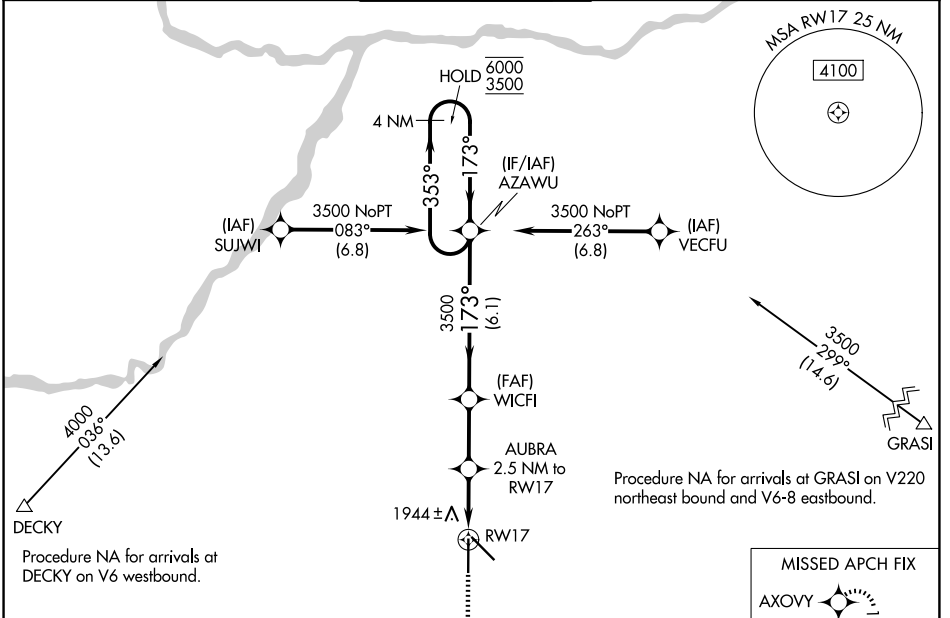


WAAS CH 60999 W17A	APP CRS 173°	Rwy Ldg 7002 TDZE 1844 Apt Elev 1847
--	------------------------	---

RNAV (GPS) RWY 17

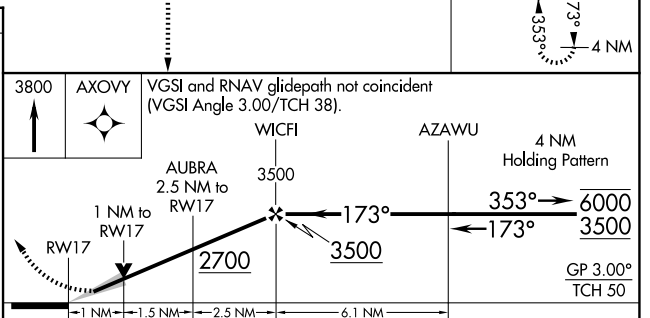
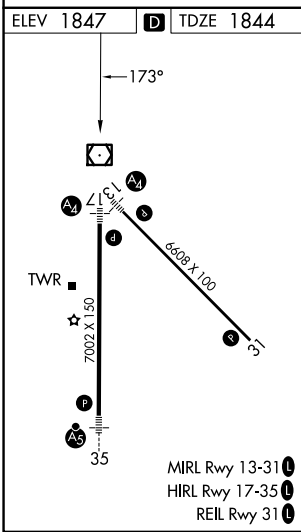
CENTRAL NEBRASKA RGNL (G.R.I)

RNP APCH - GPS.		MALS	MISSED APPROACH: Climb to 3800 direct AXOXY and hold.	
<p>⚠ Inop table does not apply to LPV. For uncompensated Baro-VNAV systems, LNAV/VNAV NA below -23°C or above 54°C. For inop ALS, increase LNAV/VNAV all Cats visibility to ½ SM.</p>		A2		
ATIS 127.4	MINNEAPOLIS CENTER 119.4 278.8	GRAND ISLAND TOWER* 118.2 (CTAF) 259.3	GND CON 121.9 259.3	UNICOM 122.95



NC-2, 14 MAY 2026 to 11 JUN 2026

NC-2, 14 MAY 2026 to 11 JUN 2026



CATEGORY	A	B	C	D
LPV DA		2044-¾	200 (200-¾)	
LNAV/VNAV DA		2125-¾	281 (300-¾)	
LNAV MDA		2200-¾	356 (400-¾)	
CIRCLING	2300-1	453 (500-1)	2400-1½ 553 (600-1½)	2560-2¼ 713 (800-2¼)