


WAAS CH 86799 W35A	APP CRS 353°	Rwy Ldg 7002 TDZE 1847 Apt Elev 1847
--	------------------------	---

RNAV (GPS) RWY 35

CENTRAL NEBRASKA RGNL (G.R.I)

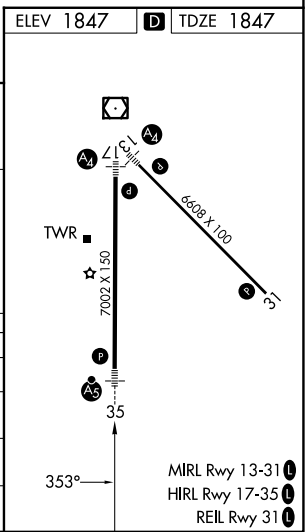
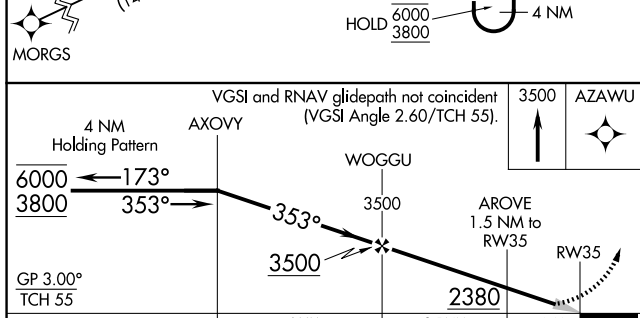
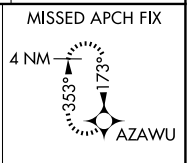
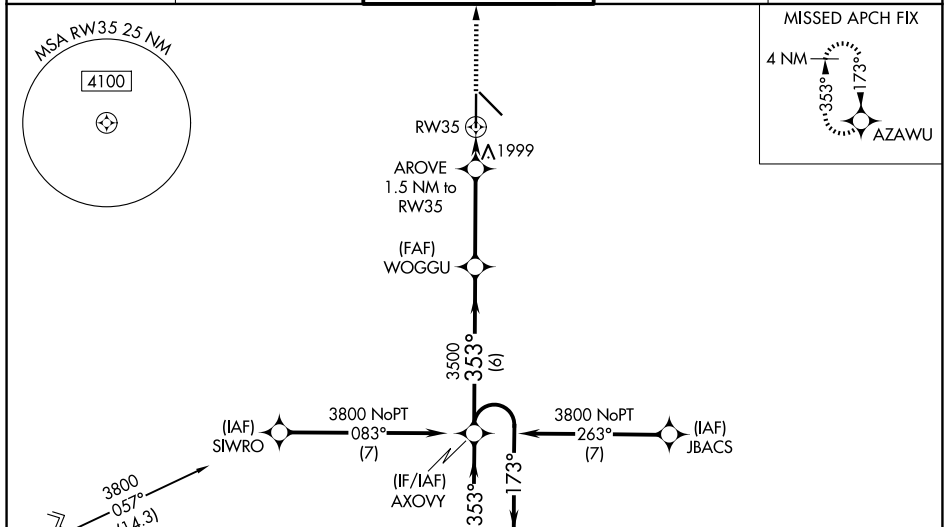
RNP APCH - GPS.

▼ For uncompensated Baro-VNAV systems, LNAV/VNAV NA below -21°C or above 54°C.
▲ Baro-VNAV NA when using Aurora altimeter setting. Circling Rwy 13 and 17 NA at night.
 For inop ALS, increase LNAV Cats C/D visibility to RVR 6000. When local altimeter setting not received, use Aurora altimeter setting and increase LPV DA to 2088 feet; increase LNAV/VNAV DA to 2328 feet and all visibilities to RVR 5000; increase all MDAs 60 feet and LNAV visibility Cats C/D to RVR 5000 and Circling visibility Cats C/D ¼ SM. For inop ALS when using Aurora altimeter setting, increase LNAV/VNAV all Cats visibility to 1 3/8 SM, increase LNAV Cats C/D visibility to 1 3/8 SM.

MALSRL


MISSED APPROACH:
 Climb to 3500 direct AZAWU and hold.

ATIS 127.4	MINNEAPOLIS CENTER 119.4 278.8	GRAND ISLAND TOWER* 118.2 (CTAF) 259.3	GND CON 121.9 259.3	UNICOM 122.95
----------------------	--	--	-------------------------------	-------------------------



CATEGORY	A	B	C	D
LPV DA		2047/24	200 (200-1/2)	
LNAV/VNAV DA		2287/40	440 (500-3/4)	
LNAV MDA	2260/24	413 (500-1/2)	2260/40	413 (500-3/4)
CIRCLING	2300-1	453 (500-1)	2400-1 1/2 553 (600-1 1/2)	2560-2 1/4 713 (800-2 1/4)

- MIRL Rwy 13-31 **1**
- HIRL Rwy 17-35 **2**
- REIL Rwy 31 **3**

NC-2, 14 MAY 2026 to 11 JUN 2026

NC-2, 14 MAY 2026 to 11 JUN 2026