

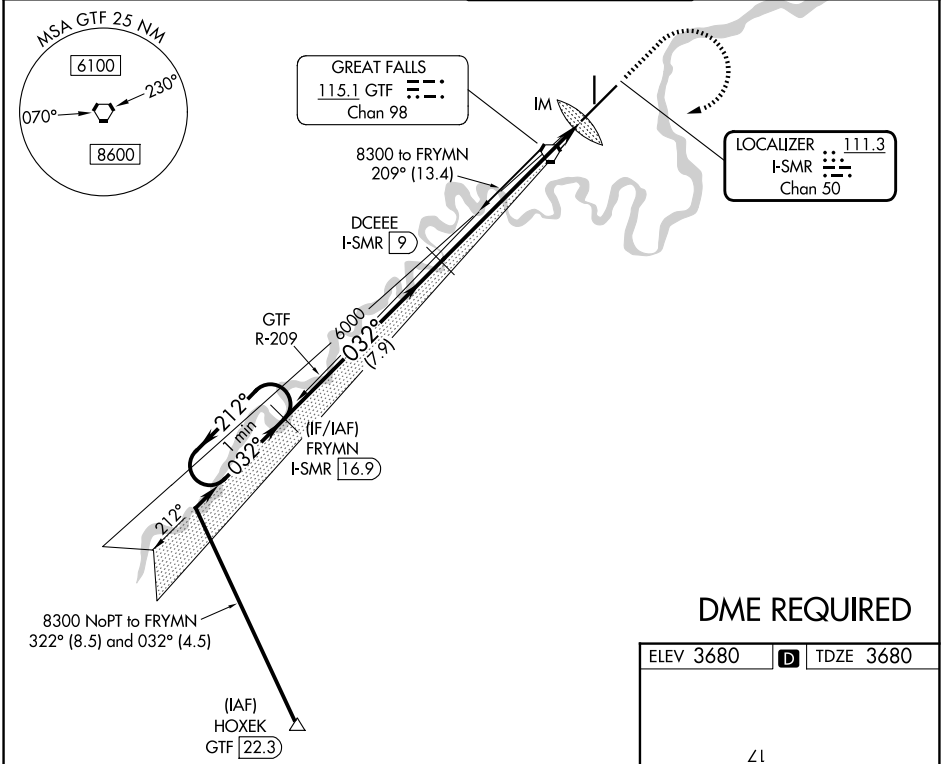
LOC/DME I-SMR 111.3 Chan 50	APP CRS 032°	Rwy Ldg 10502 TDZE 3680 Apt Elev 3680
--	------------------------	--

ILS RWY 3 (CAT II & III)

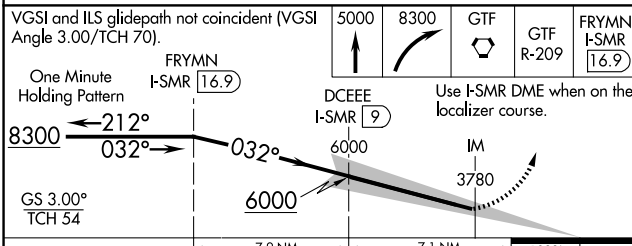
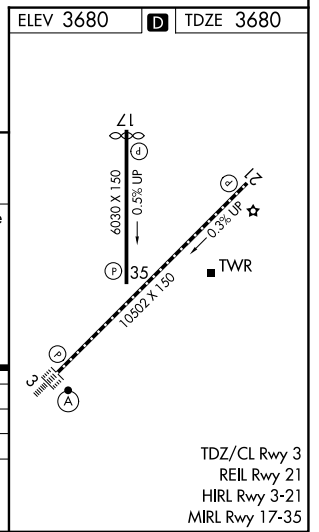
GREAT FALLS INTL (GTF)

<p>⚠ CAT II: RVR 1000 authorized with specific OPSPEC, MSPEC, or LOA approval and use of autoland or HUD to touchdown. DME required.</p>	<p>ALS-F-2</p>	<p>MISSED APPROACH: Climb to 5000 then climbing right turn to 8300 direct GTF VORTAC then on GTF VORTAC R-209 to FRYMNI/I-SMR 16.9 DME and hold.</p>
---	----------------	--

<p>ATIS 126.6 269.0</p>	<p>GREAT FALLS APP CON 128.6 379.175</p>	<p>GREAT FALLS TOWER 118.7 282.2</p>	<p>GND CON 121.7 348.6</p>
------------------------------------	---	---	---------------------------------------



DME REQUIRED



CATEGORY	A	B	C	D
S-ILS 3	CAT II RA 96/12 100 DA 3780			
S-ILS 3	CAT III RVR 06			
CATEGORY II & III ILS - SPECIAL AIRCREW & AIRCRAFT CERTIFICATION REQUIRED				

TDZ/CL Rwy 3
REIL Rwy 21
HIRL Rwy 3-21
MIRL Rwy 17-35

NW-1, 14 MAY 2026 to 11 JUN 2026

NW-1, 14 MAY 2026 to 11 JUN 2026