

LOC/DME I-SMR <b>111.3</b> Chan 50	APP CRS <b>032°</b>	Rwy Ldg <b>10502</b> TDZE <b>3680</b> Apt Elev <b>3680</b>
------------------------------------------	------------------------	------------------------------------------------------------------

# ILS RWY 3 (SA CAT I)

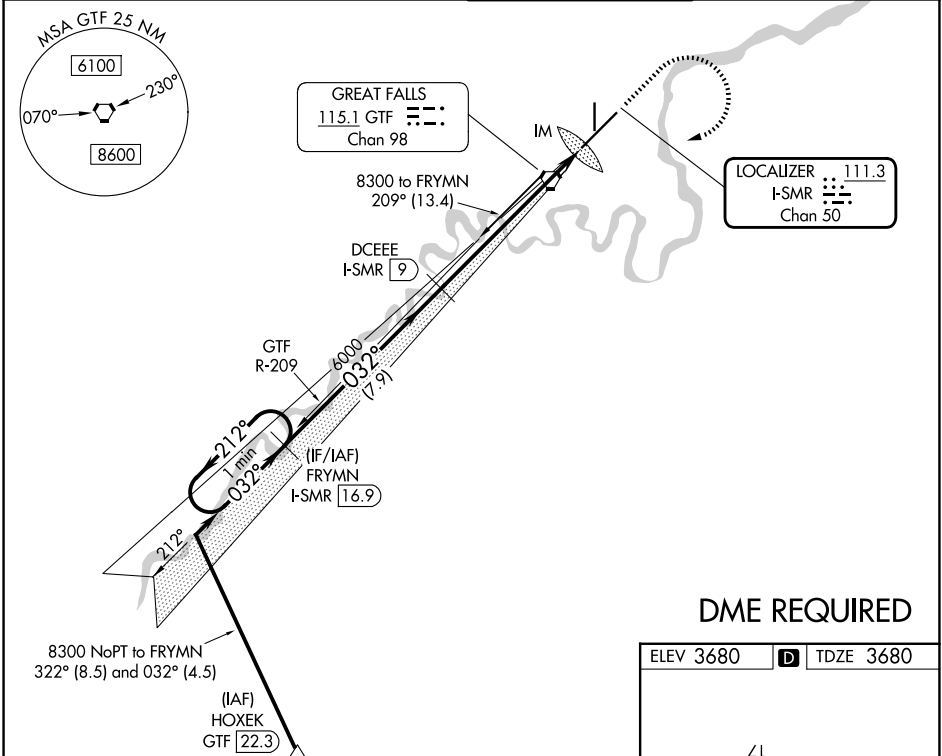
GREAT FALLS INTL (GTF)

**⚠** Requires specific OPSPEC, MSPEC, or LOA approval and use of HUD to DH. DME required.

**ALSIF-2**

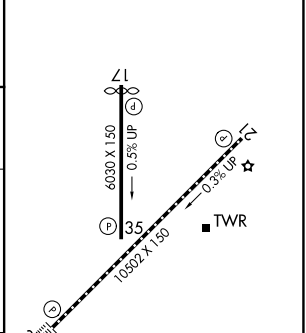
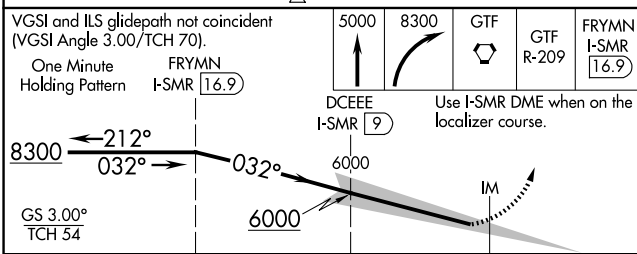
**MISSED APPROACH:** Climb to 5000 then climbing right turn to 8300 direct GTF VORTAC then on GTF VORTAC R-209 to FRYMNI/I-SMR 16.9 DME and hold.

<b>ATIS</b> <b>126.6 269.0</b>	<b>GREAT FALLS APP CON</b> <b>128.6 379.175</b>	<b>GREAT FALLS TOWER</b> <b>118.7 282.2</b>	<b>GND CON</b> <b>121.7 348.6</b>
-----------------------------------	----------------------------------------------------	------------------------------------------------	--------------------------------------



## DME REQUIRED

ELEV 3680	<b>D</b>	TDZE 3680
-----------	----------	-----------



CATEGORY	A	B	C	D
5-ILS 3	RA 140/14 150 DA 3830			

**SA CATEGORY I ILS-SPECIAL AIRCREW & AIRCRAFT CERTIFICATION REQUIRED**

TDZ/CL Rwy 3  
REIL Rwy 21  
HIRL Rwy 3-21  
MIRL Rwy 17-35

NW-1, 14 MAY 2026 to 11 JUN 2026

NW-1, 14 MAY 2026 to 11 JUN 2026