

| | | |
|--|------------------------|--|
| LOC/DME I-SMR 111.3 Chan 50 | APP CRS 032° | Rwy Ldg 10502 TDZE 3680 Apt Elev 3680 |
|--|------------------------|--|

ILS or LOC RWY 3

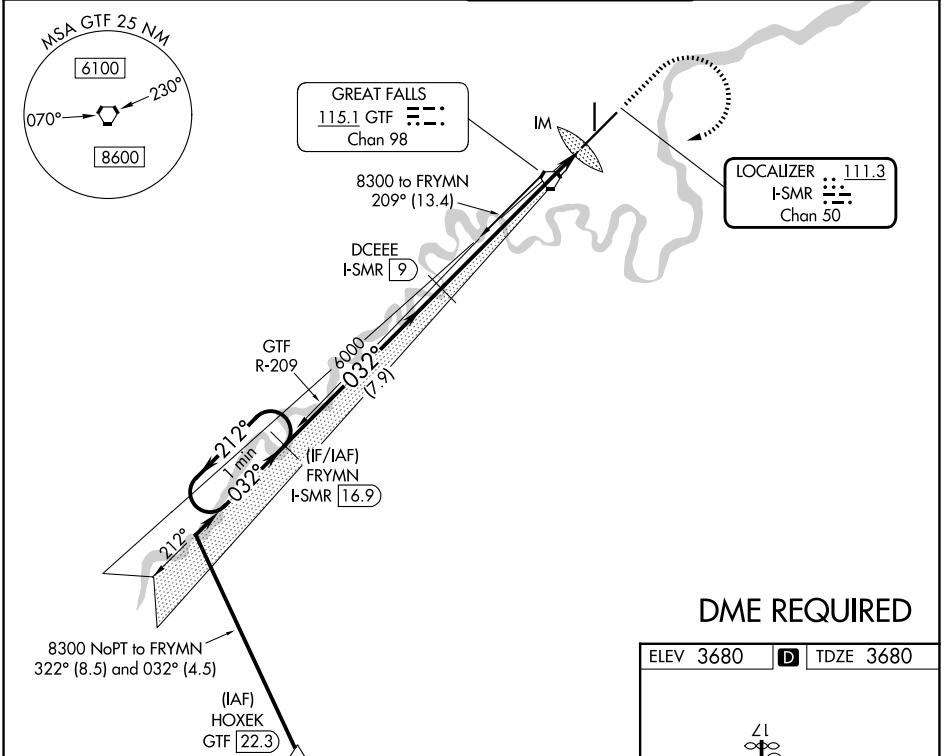
GREAT FALLS INTL (GTF)

DME required.

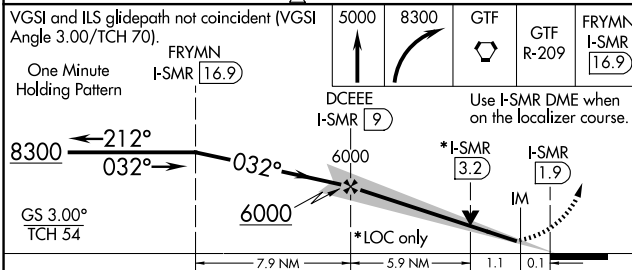
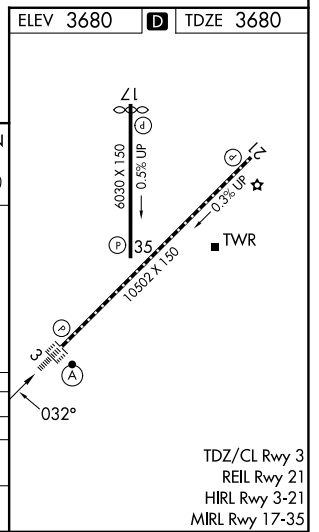
ALSF-2

MISSED APPROACH: Climb to 5000 then climbing right turn to 8300 direct GTF VORTAC then on GTF VORTAC R-209 to FRYMN/I-SMR 16.9 DME and hold.

| | | | |
|----------------------------|---|---|-------------------------------|
| ATIS 126.6 269.0 | GREAT FALLS APP CON 128.6 379.175 | GREAT FALLS TOWER 118.7 282.2 | GND CON 121.7 348.6 |
|----------------------------|---|---|-------------------------------|



DME REQUIRED



| CATEGORY | A | B | C | D |
|----------|---------|-------------|-------------------------|-------------------------|
| S-ILS 3 | | 3880/18 | 200 (200-½) | |
| S-LOC 3 | 4140/24 | 460 (500-½) | 4140/45 | 460 (500-¾) |
| CIRCLING | 4140-1 | 460 (500-1) | 4340-1¾ 660 (700-1¾) | 4420-2¼ 740 (800-2¼) |

TDZ/CL Rwy 3
REIL Rwy 21
HIRL Rwy 3-21
MIRL Rwy 17-35

NW-1, 14 MAY 2026 to 11 JUN 2026

NW-1, 14 MAY 2026 to 11 JUN 2026