

# RNAV (RNP) Z RWY 21

GREAT FALLS INTL (GTF)

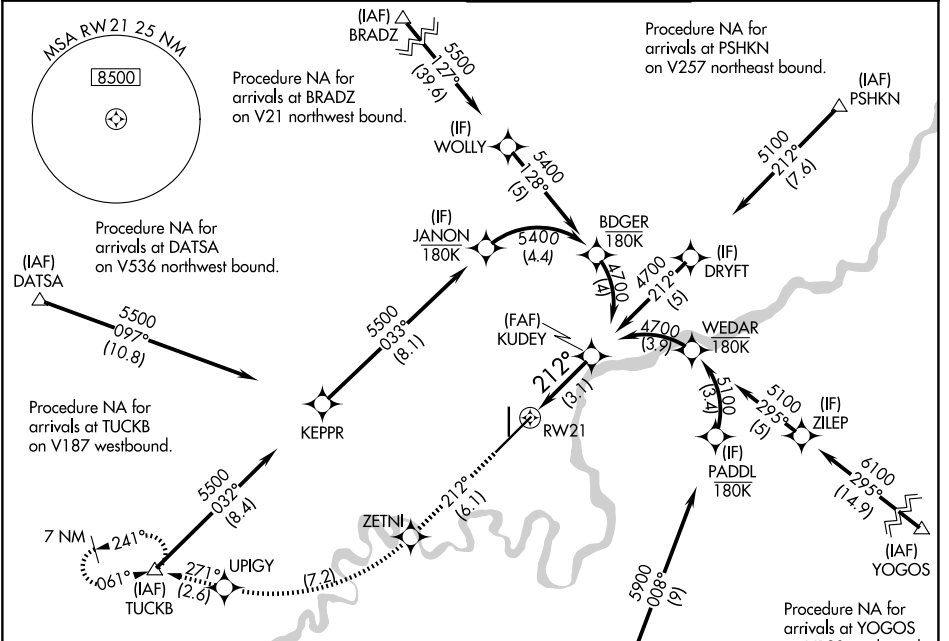
APP CRS	Rwy Ldg	<b>10502</b>
<b>212°</b>	TDZE	<b>3669</b>
	Apt Elev	<b>3680</b>

RNP AR APCH - GPS.

For uncompensated Baro-VNAV systems, procedure NA below -24°C or above 54°C.

MISSED APPROACH: Climb to 8000 on track 212° to ZETNI, right turn to UPIGY and on track 271° to TUCKB and hold, continue climb-in-hold to 8000.

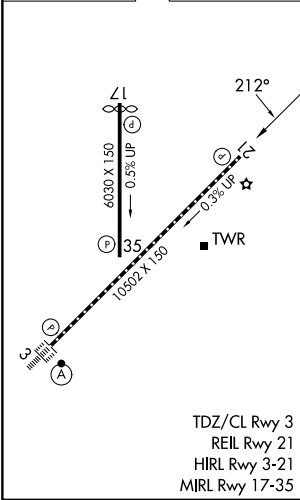
ATIS	GREAT FALLS APP CON	GREAT FALLS TOWER	GND CON
<b>126.6 269.0</b>	<b>128.6 379.175</b>	<b>118.7 282.2</b>	<b>121.7 348.6</b>



NW-1, 14 MAY 2026 to 11 JUN 2026

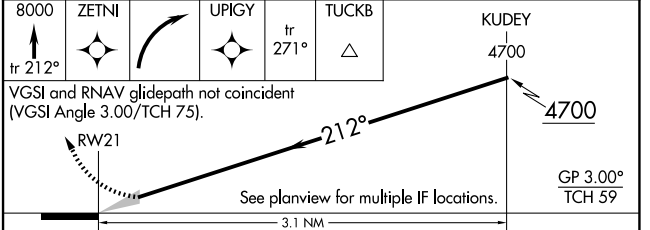
NW-1, 14 MAY 2026 to 11 JUN 2026

ELEV 3680	<b>D</b>	TDZE 3669
-----------	----------	-----------



Procedure NA for arrivals at URELE on V536 southbound.

Procedure NA for arrivals at YOGOS on V120 eastbound.



CATEGORY	A	B	C	D
RNP 0.10 DA		3942/45	273 (300-7%)	
RNP 0.30 DA		3992/50	323 (400-1)	

### AUTHORIZATION REQUIRED