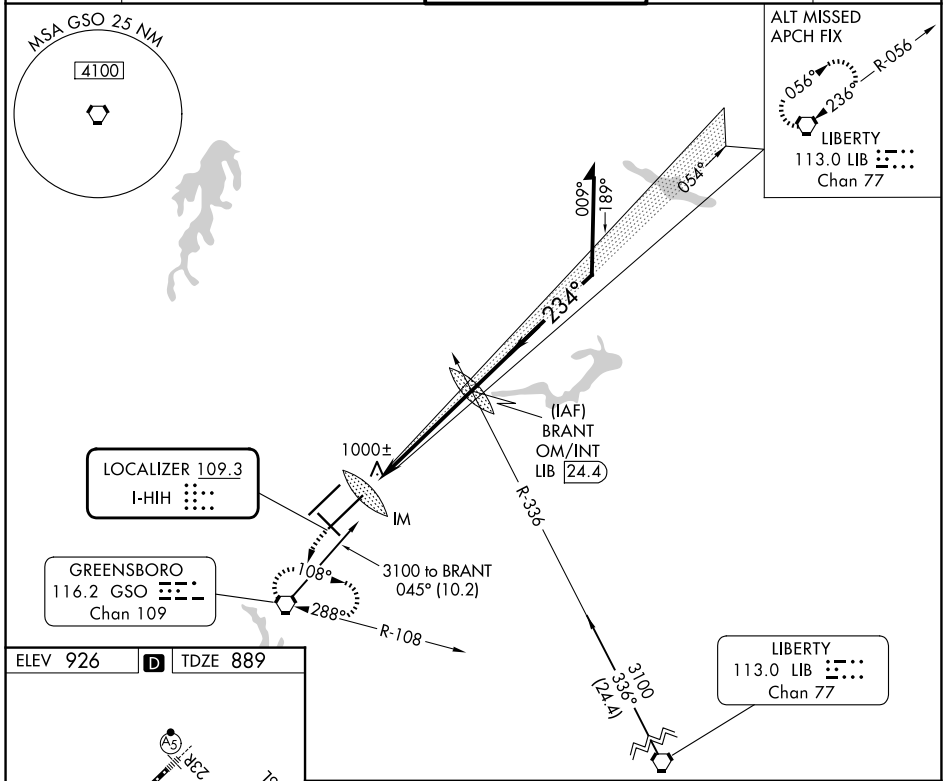


LOC I-HIH <b>109.3</b>	APP CRS <b>234°</b>	Rwy Ldg <b>9601</b>
		TDZE <b>889</b>
		Apt Elev <b>926</b>

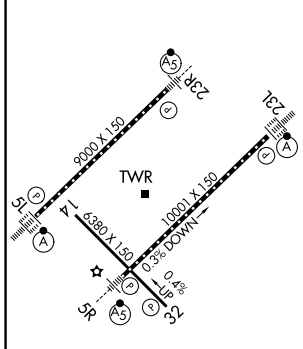
# ILS RWY 23L (CAT II)

PIEDMONT TRIAD INTL (GSO)

<p><b>▼</b> Simultaneous approach authorized with Rwy 23R.</p> <p><b>▲</b> ALSF-2</p>		<p>MISSED APPROACH: Climb to 1300 then climbing left turn to 3100 direct GSO VORTAC and hold, continue climb-in-hold to 3100.</p>		
D-ATIS <b>128.55</b>	GREENSBORO APP CON <b>124.35 269.225</b> <b>126.6 327.075</b> (050°-249°)	GREENSBORO TOWER <b>119.1 290.325</b>	GND CON <b>121.9 348.6</b>	CLNC DEL <b>121.75</b>



ELEV 926	<b>D</b>	TDZE 889
----------	----------	----------



<p>1300</p> <p>3100</p> <p>GSO</p>	<p>BRANT OM/INT LIB 24.4</p> <p>Remain within 10 NM</p>
<p>VGSI and ILS glidepath not coincident (VGSI Angle 3.00/TCH 55).</p>	<p>2729</p> <p>054°</p> <p>3100</p> <p>234°</p> <p>2900</p> <p>GS 3.00° TCH 52</p>

CATEGORY	A	B	C	D
S-ILS 23L	RA 106/12 100 DA 989			

**CATEGORY II ILS - SPECIAL AIRCREW & AIRCRAFT CERTIFICATION REQUIRED**

TDZ/CL Rwsy 5L, 23R and 23L  
REIL Rwy 32  
HIRL Rwsy 14-32, 5R-23L and 5L-23R

SE-2, 14 MAY 2026 to 11 JUN 2026

SE-2, 14 MAY 2026 to 11 JUN 2026