

LOC/DME I-LZY <b>111.9</b> Chan 56	APP CRS <b>054°</b>	Rwy Ldg <b>10001</b> TDZE <b>900</b> Apt Elev <b>926</b>
--	------------------------	--

# ILS RWY 5R (SA CAT II)

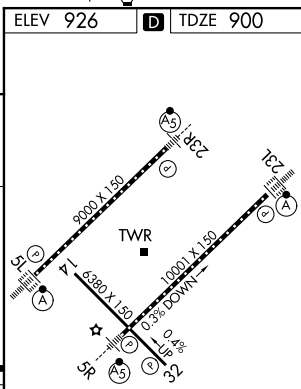
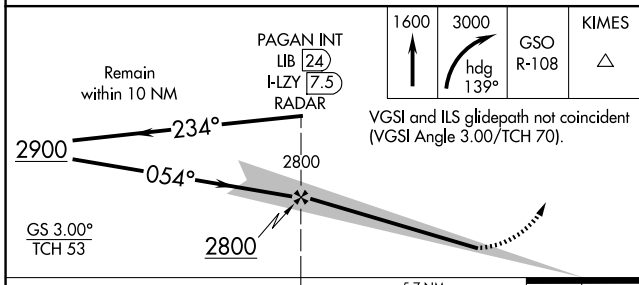
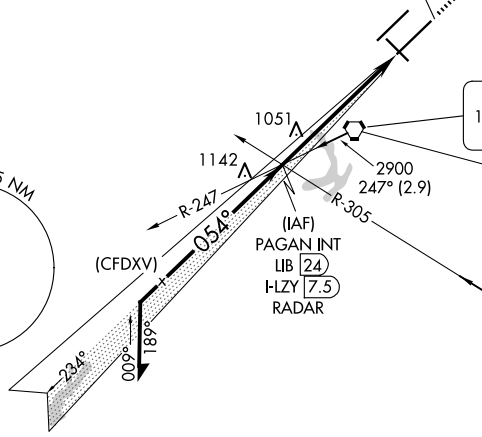
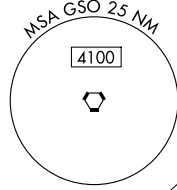
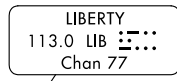
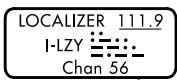
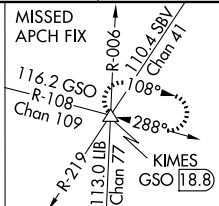
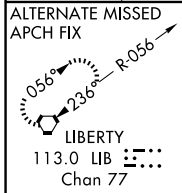
PIEDMONT TRIAD INTL (GSO)

Simultaneous approach authorized.  
 REDUCED LIGHTING: Requires specific OPSPEC, MSPEC, or LOA approval and use of autoland or HUD to touchdown.



MISSED APPROACH: Climb to 1600 then climbing right turn to 3000 on heading 139° and GSO VORTAC R-108 to KIMES INT/ GSO 18.8 DME and hold.

D-ATIS <b>128.55</b>	GREENSBORO APP CON <b>124.35 269.225</b> (250°-049°) <b>126.6 327.075</b> (050°-249°)	GREENSBORO TOWER <b>119.1 290.325</b>	GND CON <b>121.9 348.6</b>	CLNC DEL <b>121.75</b>
-------------------------	---	--	-------------------------------	---------------------------



CATEGORY	A	B	C	D
S-ILS 5R	RA 122/12 100 DA 1000			

## SA CATEGORY II ILS - SPECIAL AIRCREW & AIRCRAFT CERTIFICATION REQUIRED

TDZ/CL Rwy 5L, 23R and 23L  
 REIL Rwy 32  
 HIRL Rwy 14-32, 5R-23L and 5L-23R

SE-2, 14 MAY 2026 to 11 JUN 2026

SE-2, 14 MAY 2026 to 11 JUN 2026