


LOC/DME I-IDB <b>109.55</b> Chan 32(Y)	APP CRS <b>234°</b>	Rwy Ldg TDZE <b>9000</b> <b>864</b> Apt Elev <b>926</b>
--	------------------------	--

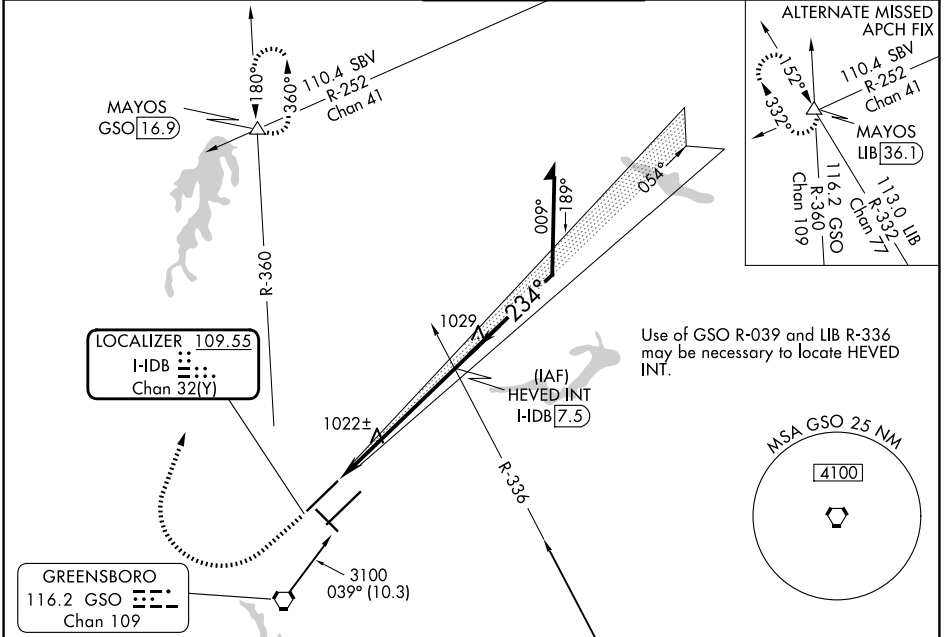
# ILS or LOC RWY 23R

PIEDMONT TRIAD INTL (GSO)

**Simultaneous approach authorized.**

**MALSR**  MISSED APPROACH: Climb to 1500 then climbing right turn to 3100 on heading 015° and GSO VORTAC R-360 to MAYOS INT/GSO 16.9 DME and hold.

D-ATIS <b>128.55</b>	GREENSBORO APP CON <b>124.35 269.225</b> <b>126.6 327.075</b> (250°-049°) (050°-249°)	GREENSBORO TOWER <b>119.1 290.325</b>	GND CON <b>121.9 348.6</b>	CLNC DEL <b>121.75</b>
-------------------------	--	--	-------------------------------	---------------------------



SE-2, 14 MAY 2026 to 11 JUN 2026

SE-2, 14 MAY 2026 to 11 JUN 2026

ELEV 926	<b>D</b>	TDZE 864
----------	----------	----------

Diagram details: RWY 23R (054°), RWY 23L (054°), RWY 32 (015°), TWR, VORTAC (9000 Y 150), VORTAC (10000 X 150), 0.3% DOWN, 0.1% UP, 5R, 5L, 3R, 3L.

Remain within 10 NM

1500 3100 hdg 015° GSO R-360 MAYOS Δ HEVED INT I-IDB 7.5

VGSI and ILS glidepath not coincident (VGSI Angle 3.00/TCH 72):

I-IDB 1.7 I-IDB 2.8

2800 2800 3100 054° 234° 2800 GS 3.00° TCH 55

1.1 NM 4.7 NM

TDZ/CL Rwy 5L, 23R and 23L  
REIL Rwy 32  
HIRL Rwy 14-32, 5R-23L and 5L-23R  
FAF to MAP 5.8 NM

Knots	60	90	120	150	180
Min:Sec	5:48	3:52	2:54	2:19	1:56

CATEGORY	A	B	C	D
S-ILS 23R		1064/18	200 (200-½)	
S-LOC 23R	1280/24	416 (400-½)	1280/40	416 (400-¾)
CIRCLING	1440-1	514 (600-1)	1700-2¼ 774 (800-2¼)	1700-2½ 774 (800-2½)