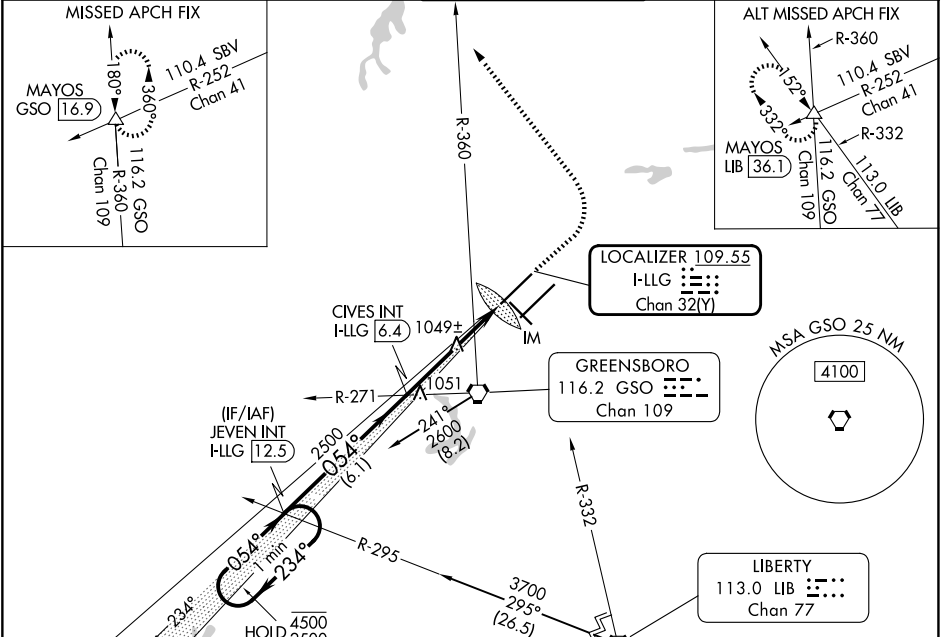


LOC/DME I-LLG 109.55 Chan 32(Y)	APP CRS 054°	Rwy Ldg TDZE Apt Elev	9000 916 926
--	------------------------	-----------------------------	---

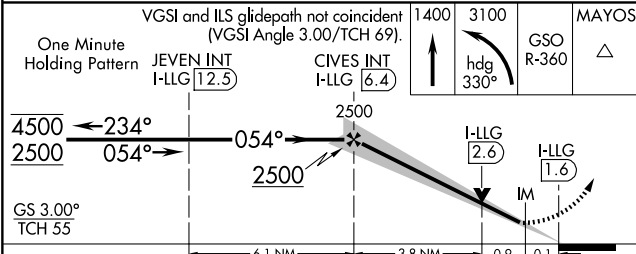
ILS or LOC RWY 5L

PIEDMONT TRIAD INTL (GSO)

DME or RADAR required for procedure entry at LIB VORTAC.		ALSF-2	MISSED APPROACH: Climb to 1400 then climbing left turn to 3100 on heading 330° and GSO VORTAC R-360 to MAYOS INT/GSO 16.9 DME and hold.	
Simultaneous approach authorized. For inop ALS, increase S-LOC 5L Cat C/D visibility to RVR 5500.				
D-ATIS 128.55	GREENSBORO APP CON 124.35 269.225 126.6 327.075 (050°-249°)	GREENSBORO TOWER 119.1 290.325	GND CON 121.9 348.6	CLNC DEL 121.75



One Minute Holding Pattern	JEVEN INT I-LLG 12.5	CIVES INT I-LLG 6.4	1400	3100	GSO R-360	MAYOS
4500 ← 234°	2500 → 054°	2500	hdg 330°			
GS 3.00° TCH 55						



CATEGORY	A	B	C	D
S-ILS 5L	1116/18		200 (200-½)	
S-LOC 5L	1300/24	384 (400-½)	1300/35	384 (400-¾)
CIRCLING	1440-1 514 (600-1)		1700-2¼ 774 (800-2¼)	1700-2½ 774 (800-2½)

ELEV 926 TDZE 916

TDZ/CL Rwy 5L, 23R and 23L
REIL Rwy 32
HIRL Rwy 14-32, 5R-23L and 5L-23R

TWR

Altitudes: 23R, 23L, 5L, 5R, 0.5% DOWN, 0.4% UP

Frequencies: 123K, 123L, 123M, 123N, 123O, 123P, 123Q, 123R, 123S, 123T, 123U, 123V, 123W, 123X, 123Y, 123Z

FAF to MAP 4.7 NM					
Knots	60	90	120	150	180
Min:Sec	4:42	3:08	2:21	1:53	1:34

SE-2, 14 MAY 2026 to 11 JUN 2026

SE-2, 14 MAY 2026 to 11 JUN 2026