

LOC/DME I-GYH 108.3 Chan 20	APP CRS 047°	Rwy Ldg TDZE Apt Elev	8000 956 956
------------------------------------------	------------------------	-----------------------------	-----------------------------------------

ILS or LOC RWY 5

DONALDSON FLD (GYH)

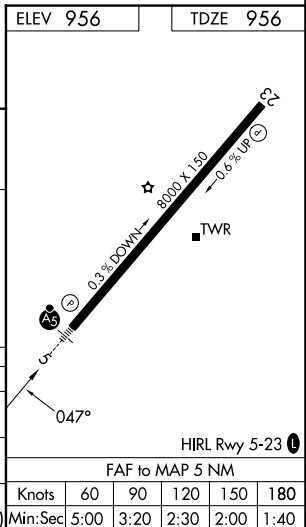
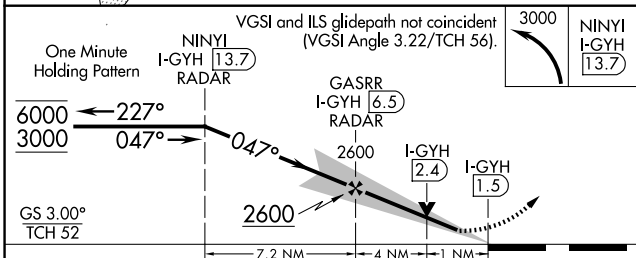
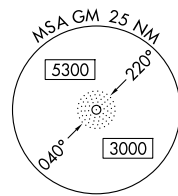
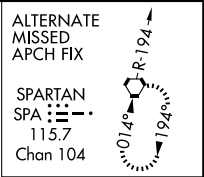
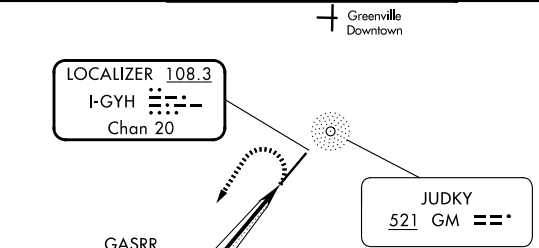
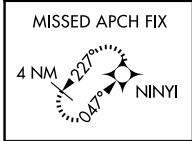
RNP APCH - GPS.
DME or RADAR required.

⚠ VDP NA when using Greer altimeter setting. When local altimeter setting not received, use Greer altimeter setting and increase S-ILS 5 DA to 1185 feet; increase all MDAs 40 feet and S-LOC 5 visibility Cats C, D, E ½ SM. For inop ALS, increase S-ILS 5 Cat E visibility to ¾ SM and increase S-LOC 5 Cat E visibility to 1 ½ SM. For inop ALS when using Greer altimeter setting, increase S-ILS 5 Cat E visibility to ¾ SM and increase S-LOC 5 Cat E visibility to 1 ½ SM. DME required when GSP App Con closed.

MALS
AS

MISSED APPROACH:
Climbing left turn to 3000 direct NINYI and hold.

ATIS 127.325	GREER APP CON★ 118.8 270.275	DONALDSON TOWER★ 133.325 (CTAF) 0 269.25	GND CON 121.4	UNICOM 122.7
------------------------	----------------------------------------	----------------------------------------------------	-------------------------	------------------------



CATEGORY	A	B	C	D	E
S-ILS 5	1156-½		200 (200-½)		
S-LOC 5	1340-½	384 (400-½)	1340-⅝	384 (400-⅝)	
CIRCLING	1420-1 464 (500-1)	1480-1 524 (600-1)	1480-1½ 524 (600-1½)	1520-2 564 (600-2)	1560-2¼ 604 (700-2¼)