

APP CRS	Rwy Ldg	<b>8000</b>
<b>227°</b>	TDZE	<b>938</b>
	Apt Elev	<b>956</b>

# RNAV (GPS) RWY 23

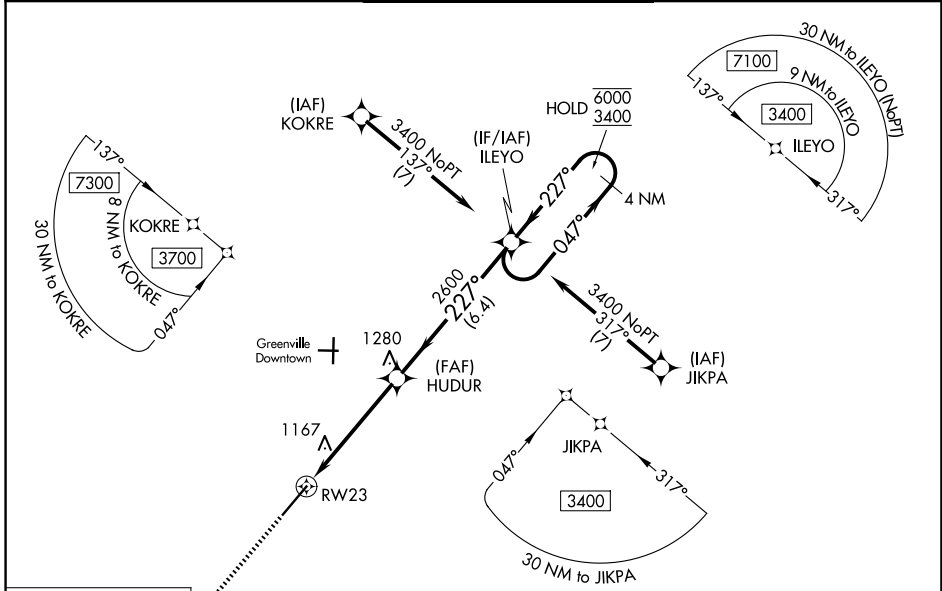
DONALDSON FLD (GYH)

RNP APCH - GPS.

**▼** Rwy 23 helicopter visibility reduction below 3/4 SM NA. When local altimeter setting not received, use Greer altimeter setting and increase all MDAs 40 feet and LNAV visibility Cat C/D 1/8 SM. VDP NA when using Greer altimeter setting.

**MISSED APPROACH:**  
Climb to 3000 direct NINYI and hold.

ATIS <b>127.325</b>	GREER APP CON★ <b>118.8 270.275</b>	DONALDSON TOWER★ <b>133.325 (CTAF) 269.25</b>	GND CON <b>121.4</b>	UNICOM <b>122.7</b>
------------------------	--	--	-------------------------	------------------------

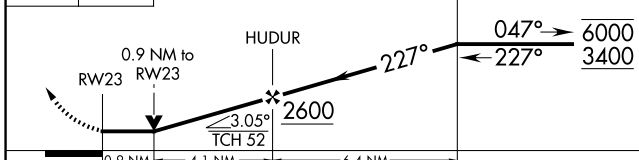


SE-2, 14 MAY 2026 to 11 JUN 2026

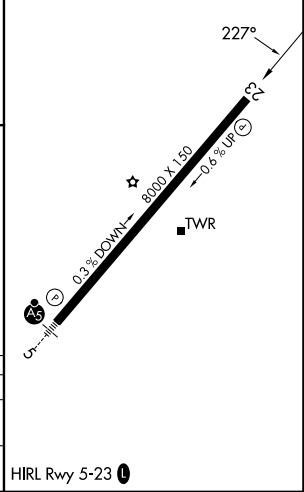
SE-2, 14 MAY 2026 to 11 JUN 2026



**3000** NINYI  
 ↑  
 VGSI and descent angles not coincident (VGSI Angle 4.14/TCH 95).



ELEV 956	TDZE 938
----------	----------



CATEGORY	A	B	C	D
LNAV MDA	1420-1	482 (500-1)	1420-1 3/8	482 (500-1 3/8)
CIRCLING	1420-1 464 (500-1)	1480-1 524 (600-1)	1480-1 1/2 524 (600-1 1/2)	1520-2 564 (600-2)

HIRL Rwy 5-23