

| | | |
|---------------------------|------------------------|---|
| LOC I-GMU 109.7 | APP CRS 006° | Rwy Ldg 5393 TDZE 1015 Apt Elev 1048 |
|---------------------------|------------------------|---|

ILS or LOC RWY 1

GREENVILLE DOWNTOWN (GMU)

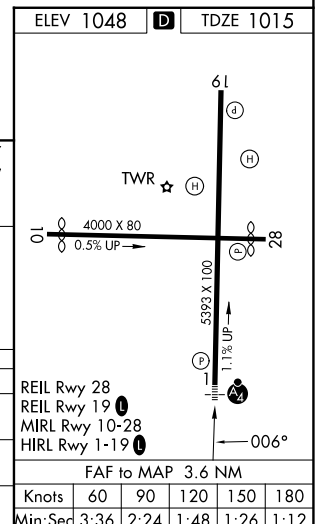
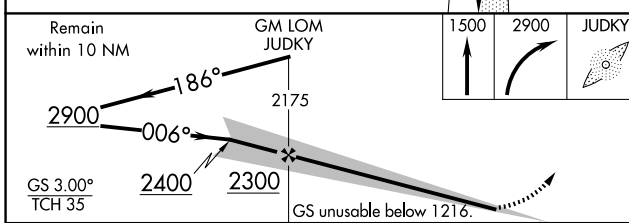
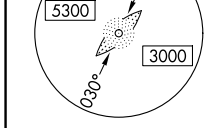
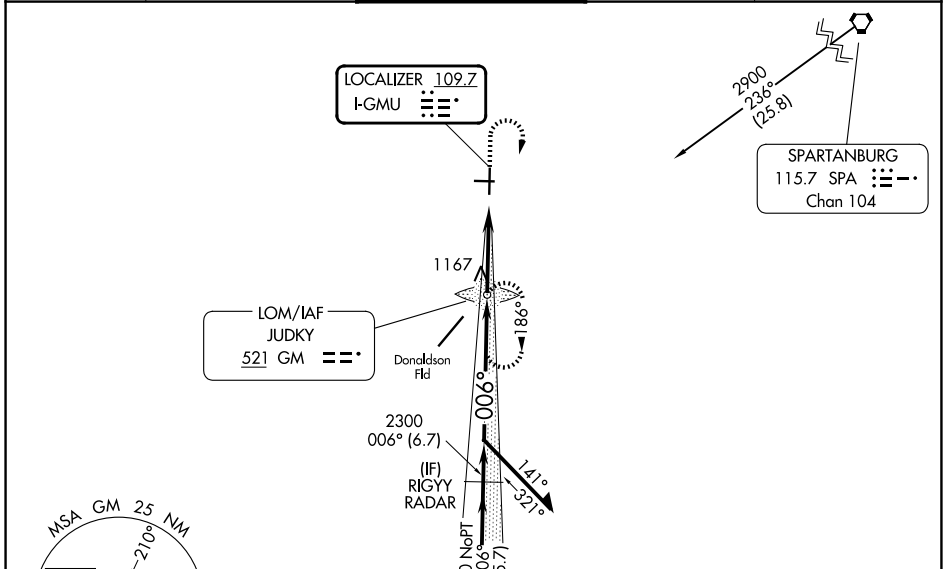
ADF required. RADAR required for procedure entry at SPRKI.

⚠ Inop table does not apply to S-ILS 1 all Cats. For inop ALS, increase S-LOC 1 visibility Cats C/D to 1 1/2 SM. When local altimeter setting not received, use Greer altimeter setting and increase DA to 1248, increase all MDAs 40 feet and Circling Cat C visibility 1/4 SM. For inop ALS when using Greer altimeter setting, increase S-LOC 1 visibility Cat C/D to 1 1/2 SM. When using Greer altimeter setting, inop table does not apply to S-ILS 1 all Cats.

MALSF

⚠ MISSED APPROACH: Climb to 1500 then climbing right turn to 2900 direct JUDKY LOM and hold, continue climb-in-hold to 2900.

| | | | | |
|------------------------|--|--|--------------------------|-------------------------|
| ATIS 127.075 | GREER APP CON* 118.8 270.275 | GREENVILLE TOWER* 119.9 (CTAF) 0 257.7 | GND CON 121.25 | UNICOM 122.95 |
|------------------------|--|--|--------------------------|-------------------------|



| CATEGORY | A | B | C | D |
|----------|----------|---------------|-----------------------|-------------------------------|
| S-ILS 1 | | 1216-3/4 | 201 (200-3/4) | |
| S-LOC 1 | 1420-3/4 | 405 (400-3/4) | 1420-1 | 405 (400-1) |
| CIRCLING | 1620-1 | 572 (600-1) | 1780-2 732 (800-2) | 1860-2 3/4 812 (900-2 3/4) |

SE-2, 14 MAY 2026 to 11 JUN 2026

SE-2, 14 MAY 2026 to 11 JUN 2026