

WAAS CH 93837 W19A	APP CRS 186°	Rwy Ldg TDZE Apt Elev	5393 1048 1048
--	------------------------	-----------------------------	---

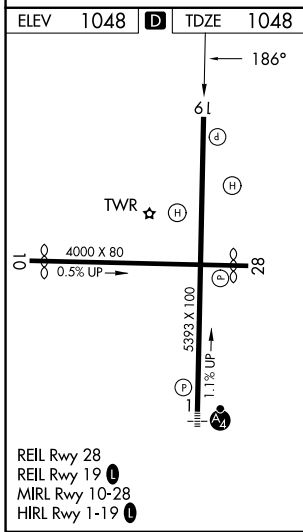
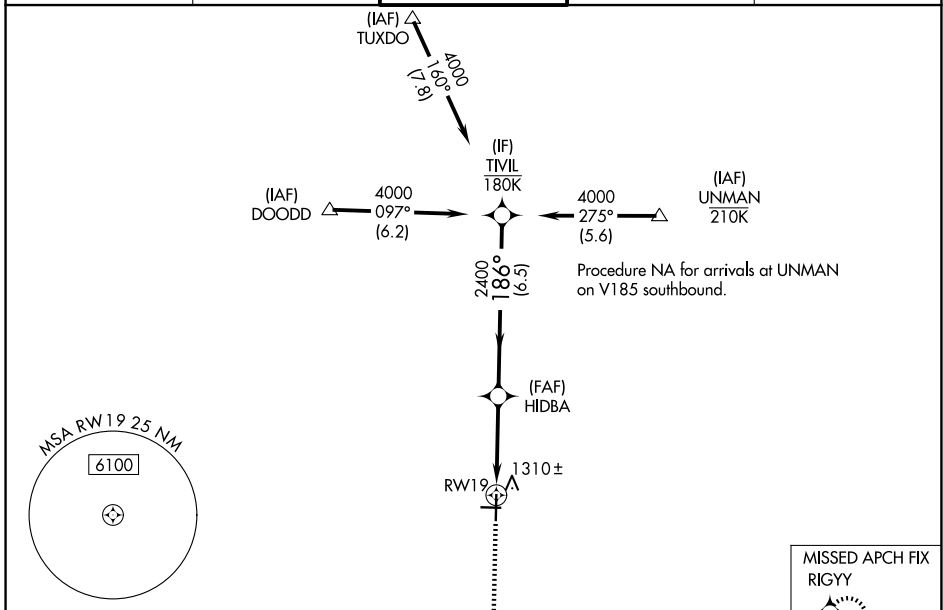
RNAV (GPS) RWY 19

GREENVILLE DOWNTOWN (GMU)

⚠ For uncompensated Baro-VNAV systems, LNAV/VNAV NA below -6°C (22°F) or above 54°C (130°F).
⚠ DME/DME RNP-0.3 NA. When local altimeter setting not received, use Greer altimeter setting and increase all DA 29 feet and all MDA 40 feet; increase LPV and LNAV/VNAV all Cats visibility 1/8 mile, increase LNAV Cats C/D and Circling Cat C visibility 1/4 mile.

MISSED APPROACH: Climb to 3000 direct RIGYY and hold.

ATIS 127.075	GREER APP CON ★ 118.8 270.275	GREENVILLE TOWER ★ 119.9 (CTAF) 0 257.7	GND CON 121.25	UNICOM 122.95
------------------------	---	--	--------------------------	-------------------------



ELEV 1048	D	TDZE 1048		
<p>3000 RIGYY</p> <p>HIDBA 2400</p> <p>RW19 2400</p> <p>TWIL 4000</p> <p>GP 3.50° TCH 40</p>				
CATEGORY	A	B	C	D
LPV DA	1373-1 325 (400-1)			NA
LNAV/VNAV DA	1480-1¼ 432 (500-1¼)			NA
LNAV MDA	1560-1	512 (600-1)	1560-1⅓	512 (600-1⅓)
CIRCLING	1620-1	572 (600-1)	1780-2 732 (800-2)	1860-2¾ 812 (900-2¾)

SE-2, 14 MAY 2026 to 11 JUN 2026

SE-2, 14 MAY 2026 to 11 JUN 2026