

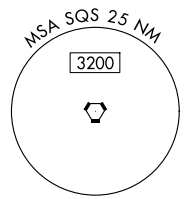
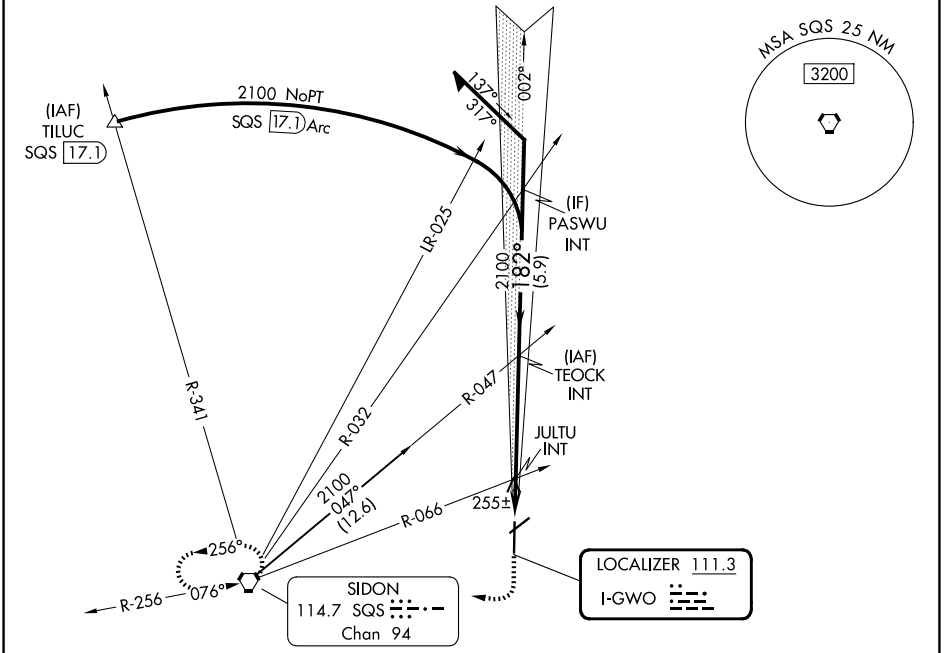
LOC I-GWO 111.3	APP CRS 182°	Rwy Ldg TDZE Apt Elev	6501 145 162
---------------------------	------------------------	-----------------------------	---

ILS or LOC RWY 18

GREENWOOD-LEFLORE (GWO)

<p>⚠ Rwy 18 helicopter visibility reduction below 3/4 SM NA. Circling Rwy 5, 23 NA at night. For inop ALS, increase S-ILS 18 all Cats 7/8 SM, and S-LOC 18 Cat A/B visibility to 1 SM.</p>	<p>MALSR</p>	<p>MISSED APPROACH: Climb to 1000 then climbing right turn to 2500 direct SQS VORTAC and hold.</p>
---	--------------	--

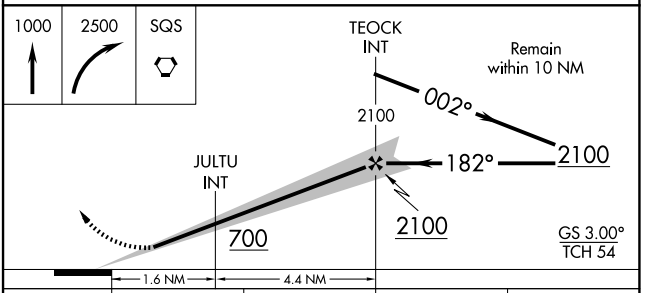
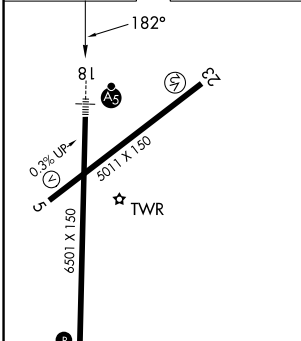
ASOS 119.975	MEMPHIS CENTER 132.5 259.1	GREENWOOD TOWER ★ 118.35 (CTAF) 367.6	GND CON 125.55 373.4	UNICOM 122.95
------------------------	--------------------------------------	---	--------------------------------	-------------------------



SC-4, 14 MAY 2026 to 11 JUN 2026

SC-4, 14 MAY 2026 to 11 JUN 2026

ELEV 162	TDZE 145
-----------------	-----------------



FAF to MAP 6 NM					
Knots	60	90	120	150	180
Min:Sec	6:00	4:00	3:00	2:24	2:00
CATEGORY	A	B	C	D	
S-ILS 18	464-3/4		319 (400-3/4)		
S-LOC 18	520-3/4		375 (400-3/4)		
CIRCLING	720-1	760-1	940-2 3/4	1020-3	
	558 (600-1)	598 (600-1)	778 (800-2 3/4)	858 (900-3)	