

WAAS CH 50199 W18A	APP CRS 182°	Rwy Ldg TDZE Apt Elev	6501 145 162
--	------------------------	-----------------------------	---

RNAV (GPS) RWY 18

GREENWOOD-LEFLORE (GWO)

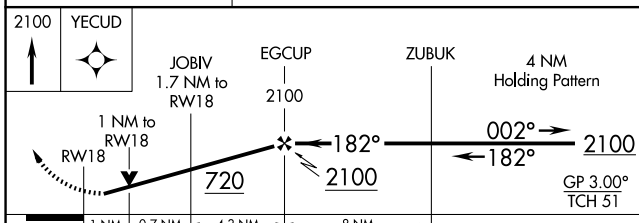
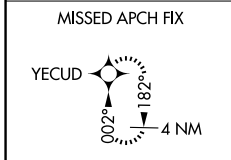
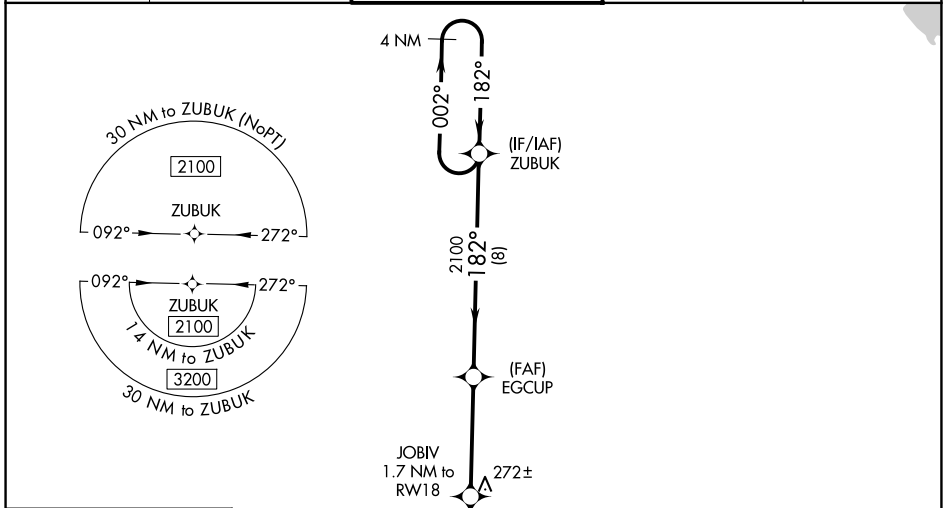
RNP APCH-GPS.

For uncompensated Baro-VNAV systems, LNAV/VNAV NA below -22°C or above 54°C. Baro-VNAV and VDP NA when using Greenville altimeter setting. For inop ALS when using Greenville altimeter setting, increase LPV all Cats visibility to 1½ SM, and LNAV/VNAV all Cats to 1¾ SM, and LNAV Cat A/B to 1 SM, and Cat C/D to 1¾ SM. When local altimeter setting not received, use Greenville altimeter setting: increase LPV DA to 580 feet and visibility ¼ SM, LNAV/VNAV DA to 675 feet and visibility ¾ SM; increase all MDAS 120 feet and visibility LNAV Cat C/D ¼ SM and Circling Cat C ½ SM. For inop ALS, increase LNAV/VNAV all Cats visibility to 1¾ SM, and LNAV all Cats to 1 SM. Rwy 18 helicopter visibility reduction below ¾ SM NA. Circling Rwy 5, 23 NA at night.

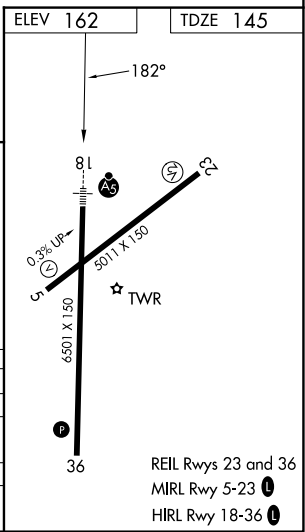
MALSRS
A5

MISSED APPROACH:
Climb to 2100 direct YECUD and hold.

ASOS 119,975	MEMPHIS CENTER 132.5 259.1	GREENWOOD TOWER ★ 118.35 (CTAF) 0 367.6	GND CON 125.55 373.4	UNICOM 122.95
------------------------	--------------------------------------	---	--------------------------------	-------------------------



CATEGORY	A	B	C	D
LPV DA		471-¾	326 (400-¾)	
LNAV/VNAV DA		566-1	421 (500-1)	
LNAV MDA		520-¾	375 (400-¾)	
CIRCLING	760-1	598 (700-1)	1000-2½ 838 (900-2½)	1120-3 958 (1000-3)



SC-4, 14 MAY 2026 to 11 JUN 2026

SC-4, 14 MAY 2026 to 11 JUN 2026