

WAAS CH <b>69631</b> <b>W36A</b>	APP CRS <b>002°</b>	Rwy Ldg <b>6501</b> TDZE <b>142</b> Apt Elev <b>162</b>
--	------------------------	---

# RNAV (GPS) RWY 36

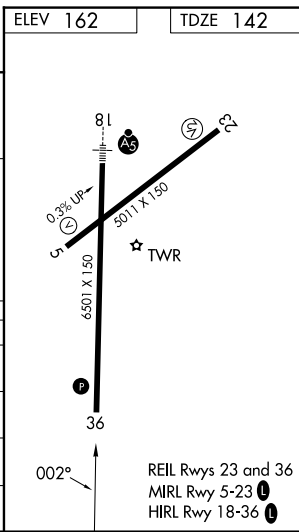
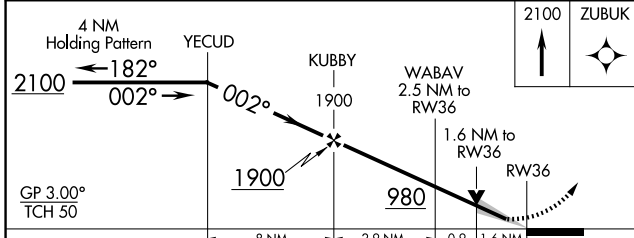
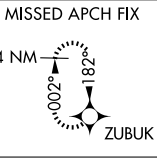
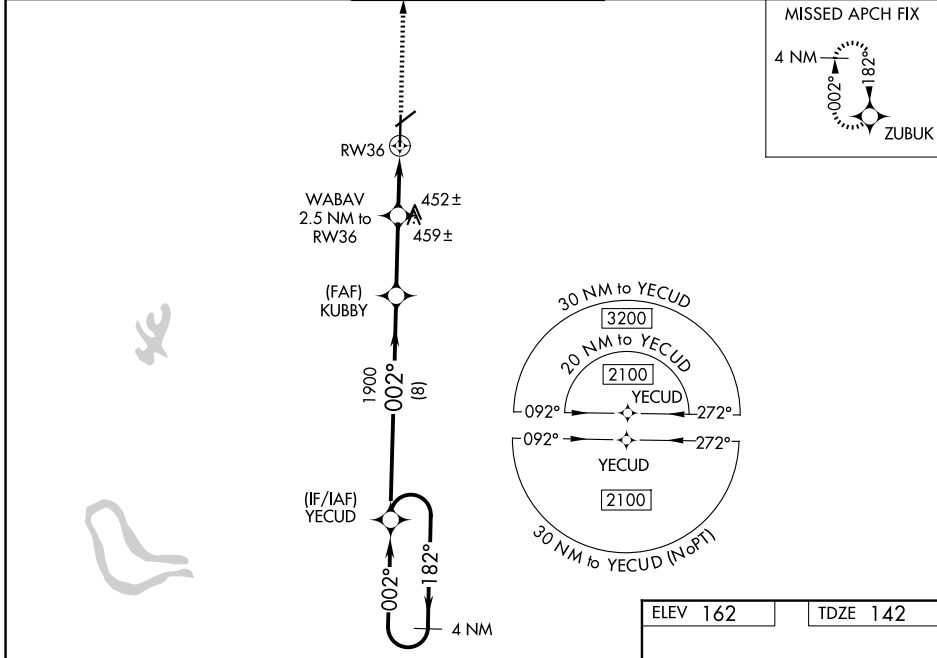
GREENWOOD-LEFLORE (GWO)

RNP APCH-GPS.

▼ For uncompensated Baro-VNAV systems, LNAV/VNAV NA below -22°C or above 54°C.  
 ▲ VDP and Baro-VNAV NA when using Greenville altimeter setting. Circling Rwy 5, 23 NA at night. When local altimeter setting not received, use Greenville altimeter setting: increase LPV DA to 501 feet and visibility ½ SM, LNAV/VNAV DA to 667 feet and visibility ¾ SM; increase all MDAs 120 feet and visibility LNAV Cat C/D ¼ SM and Circling Cat C ½ SM.

MISSED APPROACH:  
Climb to 2100 direct ZUBUK and hold.

ASOS <b>119,975</b>	MEMPHIS CENTER <b>132.5 259.1</b>	<b>GREENWOOD TOWER ★</b> <b>118.35 (CTAF) 0 367.6</b>	GND CON <b>125.55 373.4</b>	UNICOM <b>122.95</b>
------------------------	--------------------------------------	--	--------------------------------	-------------------------



CATEGORY	A	B	C	D
LPV DA		392-¾	250 (300-¾)	
LNAV/VNAV DA		558-1⅜	416 (400-1⅜)	
LNAV MDA	700-1	558 (600-1)	700-1⅞	558 (600-1⅞)
CIRCLING	760-1	598 (600-1)	1000-2½ 838 (900-2½)	1120-3 958 (1000-3)

SC-4, 14 MAY 2026 to 11 JUN 2026

SC-4, 14 MAY 2026 to 11 JUN 2026