

WAAS CH 78239 W09A	APP CRS 092°	Rwy Ldg TDZE Apt Elev	5001 631 631
--	------------------------	-----------------------------	---

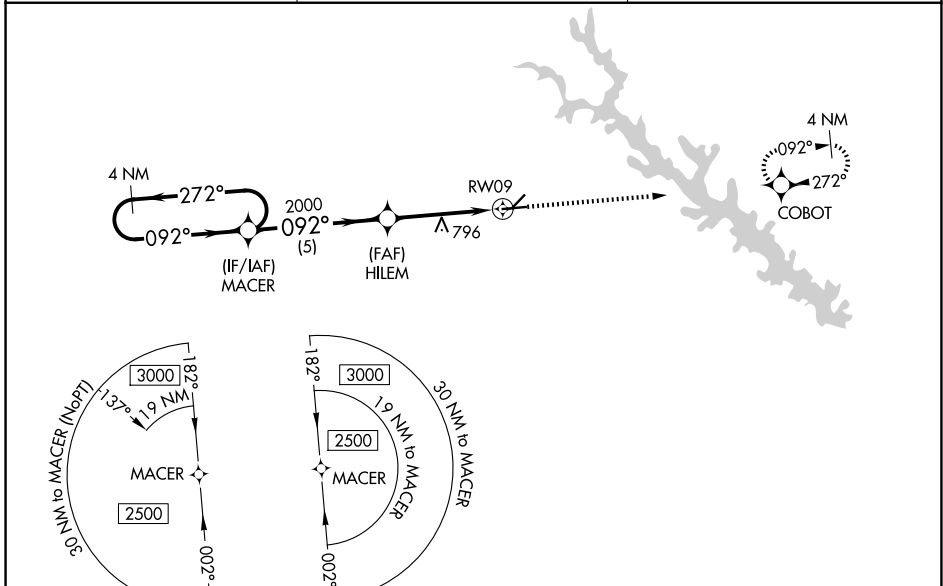
RNAV (GPS) RWY 9

GREENWOOD COUNTY (G.R.D)

For uncompensated Baro-VNAV systems, LNAV/VNAV NA below -10°C (14°F) or above 54°C (130°F). Baro-VNAV and VDP NA when using Laurens altimeter setting. DME/DME RNP-0.3 NA. Circling Rwy 5, 23 NA at night. When local altimeter setting not received, use Laurens altimeter setting and increase LPV DA to 991 feet and visibility 1/8 SM all Cats, LNAV/VNAV DA to 1070 feet and visibility 1/4 SM all Cats, increase all MDA 60 feet, and LNAV Cat C/D visibility 1/8 SM and Circling Cat C/D visibility 1/4 SM. Rwy 9 helicopter visibility reduction below 3/4 SM NA.

MISSED APPROACH:
Climb to 2500 direct COBOT and hold.

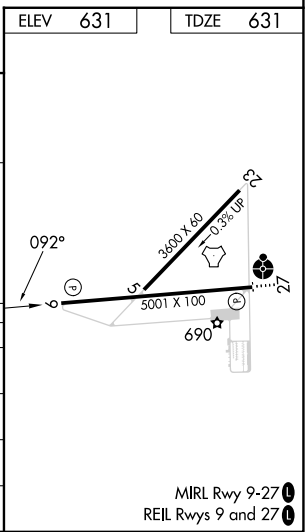
ASOS 121.125	GREER APP CON ★ 120.6 350.2	UNICOM 122.975 (CTAF) 0
------------------------	---------------------------------------	-----------------------------------



SE-2, 14 MAY 2026 to 11 JUN 2026

SE-2, 14 MAY 2026 to 11 JUN 2026

	ELEV 631	TDZE 631		
4 NM Holding Pattern	MACER	HILEM		
2500 ← 272°	→ 092°	2000		
GP 3.00°				
TCH 55				
	5 NM	3 NM		
		1.2 NM		
		*1.2 NM to RWY 9		
		RWY 9		
		3600 X 60		
		5001 X 100		
		690		
		27		
		*LNAV only.		
CATEGORY	A	B	C	D
LPV DA	938-1 307 (400-1)			
LNAV/VNAV DA	1017-1 1/4 386 (400-1 1/4)			
LNAV MDA	1060-1	429 (500-1)	1060-1 1/4	429 (500-1 1/4)
CIRCLING	1080-1	1100-1	1320-2	1340-2 1/4
	449 (500-1)	469 (500-1)	689 (700-2)	709 (800-2 1/4)



MIRL Rwy 9-27 0
REIL Rwys 9 and 27 0