

TOLEDO, OHIO

# HI-ILS Y or LOC Y RWY 25

LOC/DME I-BQE <b>108.7</b> Chan <b>24</b>	APCH CRS <b>252°</b>	Rwy Idg <b>10,599</b> TDZE <b>678</b> Arpt Elev <b>684</b>	[USAF]	EUGENE F KRANZ TOLEDO EXPRESS (KTOL)
---	-------------------------	--	--------	--------------------------------------

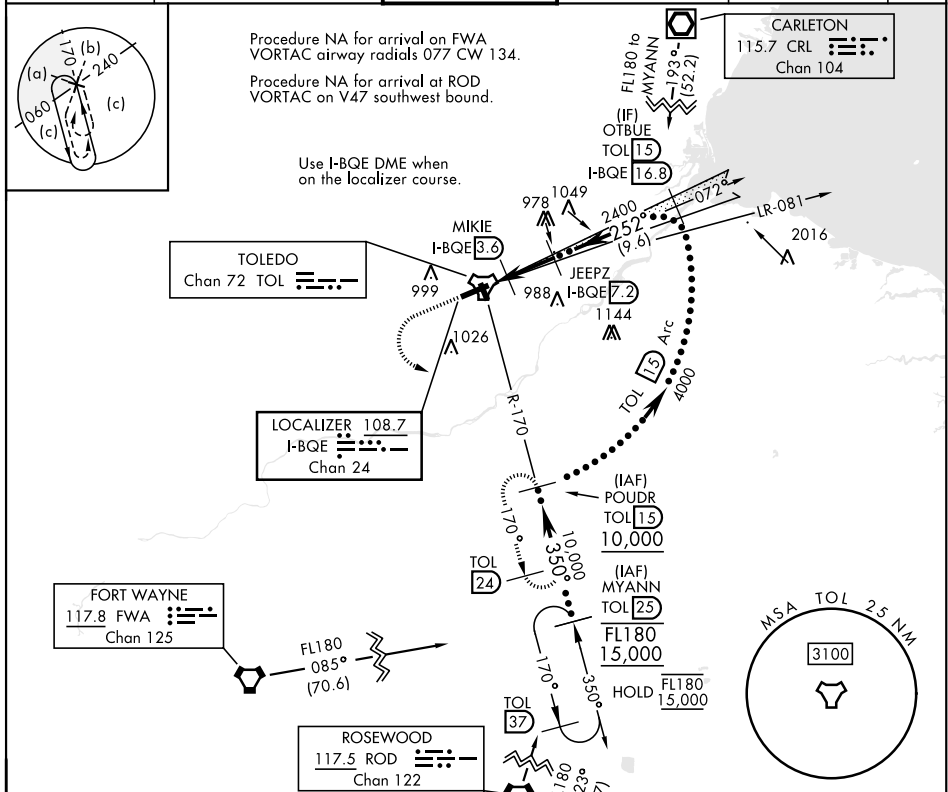
DME required

▼ \* When ALS inop, increase vis to 1½ miles.

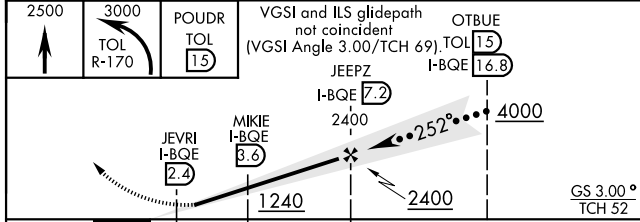
MALSRS (A5)

MISSED APPROACH: Climb to 2500 then climbing left turn to 3000 on TOL R-170 to POUDR (TOL R-170/1.5 DME) and hold.

ATIS <b>118.75 290.225</b>	TOLEDO APP CON <b>126.1 317.55</b>	TOLEDO TOWER <b>118.1 285.4</b>	GND CON <b>121.9 348.6</b>	CLNC DEL <b>121.75 348.6</b>	ASR
-------------------------------	---------------------------------------	------------------------------------	-------------------------------	---------------------------------	-----

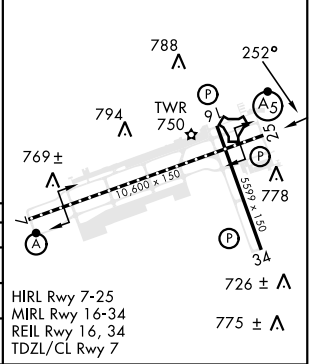


EMERG SAFE ALT 100 NM 3100



ELEV	684	TDZE	678
------	-----	------	-----

CATEGORY	C	D	E
S-ILS 25	945/20	267 (300-½)	
S-LOC 25 *	1200/55	522 (600-1)	
CIRCLING	1300-1¾ 616 (700-1¾)	1360-2¼ 676 (700-2¼)	1360-2½ 676 (700-2½)



TOLEDO, OHIO 41° 35'N-83° 48'W EUGENE F KRANZ TOLEDO EXPRESS (KTOL)

Amdt 6C 23JAN25

# HI-ILS Y or LOC Y RWY 25

EC-2, 14 MAY 2026 to 11 JUN 2026

EC-2, 14 MAY 2026 to 11 JUN 2026