

HI-TACAN RWY 25

TACAN TOL Chan 72	APCH CRS 260°	Rwy Idg 10,599 TDZE 678 Arpt Elev 684
-----------------------------	-------------------------	--

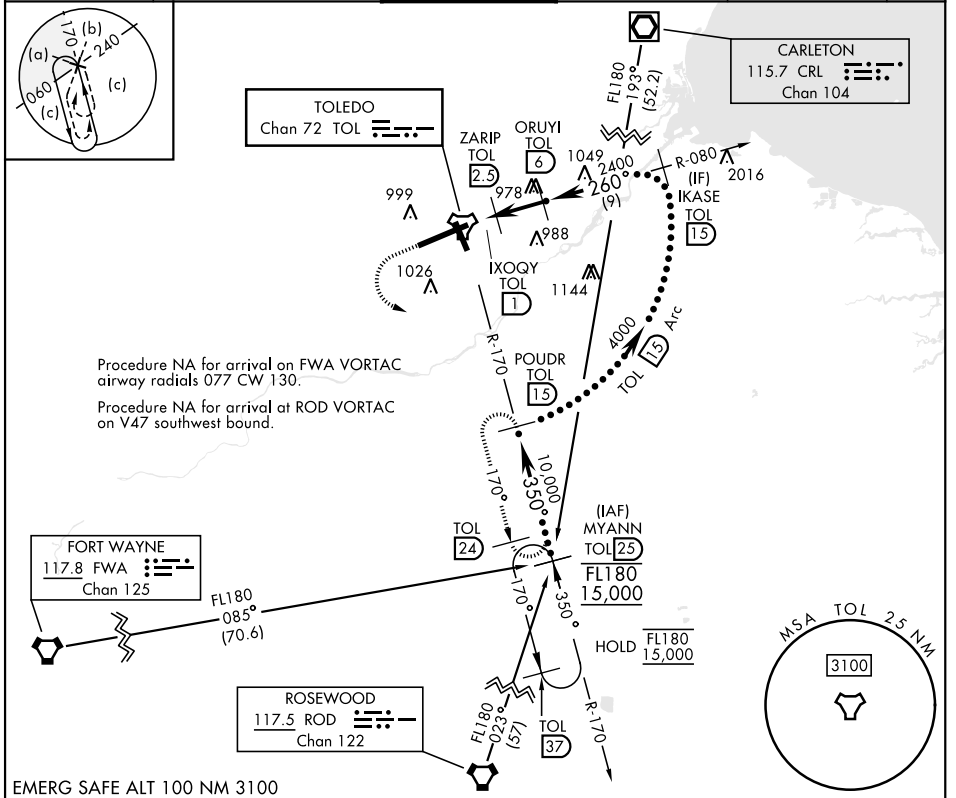
[USAF]

EUGENE F KRANZ TOLEDO EXPRESS (KTOL)

▲ * When ALS inop, increase RVR to 60, vis to 1½ mile.

▲ MISSED APPROACH: Climb to 3000 then left turn on TOL R-170 to POUDR/15 DME and hold.

ATIS 118.75 290.225	TOLEDO APP CON 126.1 317.55	TOLEDO TOWER 118.1 285.4	GND CON 121.9 348.6	CLNC DEL 121.75 348.6	ASR
-------------------------------	---------------------------------------	------------------------------------	-------------------------------	---------------------------------	-----



EMERG SAFE ALT 100 NM 3100

3000 ↑ TOL R-170	POUDR TOL 15	VGSI and ILS glidepath not coincident (VGSI Angle 3.00/TCH 69).	ELEV 684	TDZE 678
CATEGORY	C	D	E	
S-25 *	1080/40 402 (500-¾)	1080/40 402	(500-¾)	HIRL Rwy 7-25 MIRL Rwy 16-34 REIL Rwy 16, 34 TDZL/CL Rwy 7
CIRCLING	1360-2 676 (700-2)	1400-2¼ 716 (800-2¼)	1400-2½ 716 (800-2½)	726 ± A 775 ± A

HI-TACAN RWY 25

EC-2, 14 MAY 2026 to 11 JUN 2026

EC-2, 14 MAY 2026 to 11 JUN 2026