

TOLEDO, OHIO

# HI-TACAN RWY 7

TACAN TOL Chan <b>72</b>	APCH CRS <b>068°</b>	Rwy Idg TDZE Arprt Elev <b>10,599</b> <b>683</b> <b>684</b>
-----------------------------	-------------------------	--

[USAF]

EUGENE F KRANZ TOLEDO EXPRESS (KTOL)

**V** \* When ALS inop, increase CAT E vis to 1 $\frac{1}{2}$  mile.

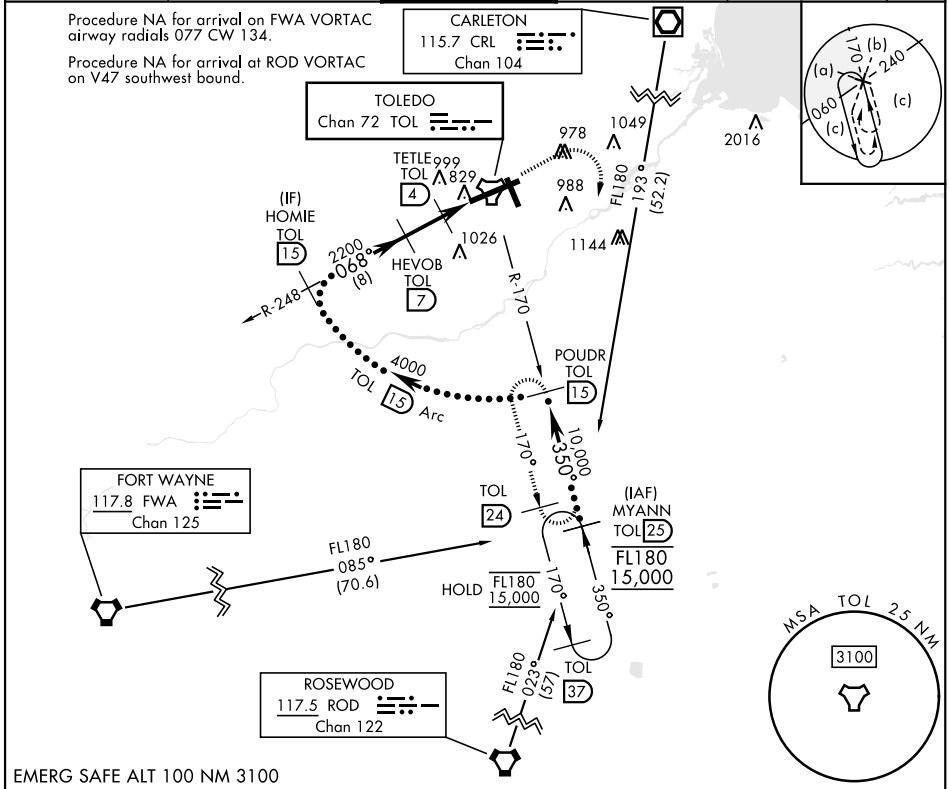
ALS-F-2

MISSED APPROACH: Climb to 3000 then right turn on TOL TACAN R-170 to POWDR/15 DME and hold.

ATIS <b>118.75 290.225</b>	TOLEDO APP CON <b>126.1 317.55</b>	TOLEDO TOWER <b>118.1 285.4</b>	GND CON <b>121.9 348.6</b>	CLNC DEL <b>121.75 348.6</b>	ASR
-------------------------------	---------------------------------------	------------------------------------	-------------------------------	---------------------------------	-----

Procedure NA for arrival on FWA VORTAC airway radials 077 CW 134.

Procedure NA for arrival at ROD VORTAC on V47 southwest bound.



EC-2, 14 MAY 2026 to 11 JUN 2026

EC-2, 14 MAY 2026 to 11 JUN 2026

EMERG SAFE ALT 100 NM 3100

			POWDR TOL 15	ELEV 684 <b>D</b> TDZE 683
CATEGORY	C	D	E	
S-7 *	1140/45	457 (500-7 $\frac{1}{2}$ )		
CIRCLING	1360-2 676 (700-2)	1400-2 $\frac{1}{4}$ 716 (800-2 $\frac{1}{4}$ )	1400-2 $\frac{1}{2}$ 716 (800-2 $\frac{1}{2}$ )	HIRL Rwy 7-25 MIRL Rwy 16-34 REIL Rwy 16, 34 TDZL/RCLS Rwy 7

TOLEDO, OHIO

41° 35' N-83° 48' W

EUGENE F KRANZ TOLEDO EXPRESS (KTOL)

Amdt 6D 26DEC24

# HI-TACAN RWY 7