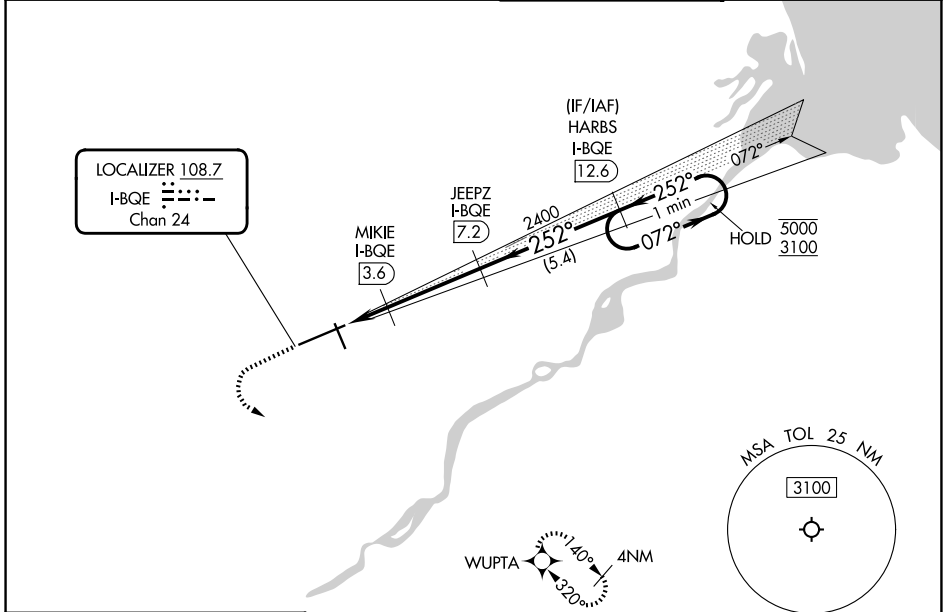


LOC/DME I-BQE <b>108.7</b> Chan <b>24</b>	APP CRS <b>252°</b>	Rwy Ldg <b>10599</b> TDZE <b>678</b> Apt Elev <b>684</b>
---	------------------------	--

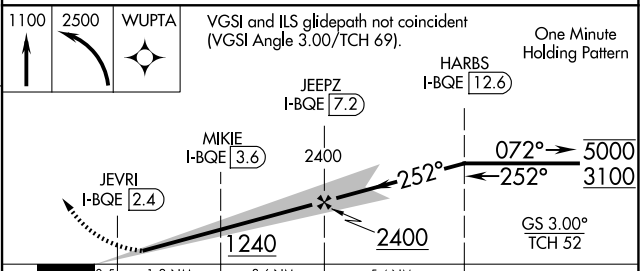
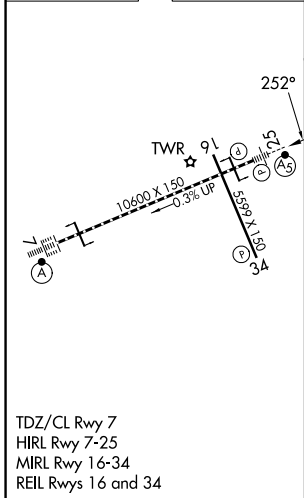
**ILS Z or LOC Z RWY 25**  
EUGENE F KRANZ TOLEDO EXPRESS (TOL)

RADAR required for procedure entry. DME, RNAV 1-GPS required.		MALSR 	MISSED APPROACH: Climb to 1100 then climbing left turn to 2500 direct WUPTA and hold.
<p><b>▼</b> For inop ALS, increase S-ILS 25 Cat E visibility to RVR 4000, and S-LOC 25 Cat E visibility to RVR 5000.</p> <p><b>▲</b> ASR * RVR 1800 authorized with use of FD or AP or HUD to DA.</p>			

ATIS <b>118.75 290.225</b>	TOLEDO APP CON <b>134.35 317.55</b>	TOLEDO TOWER <b>118.1 285.4</b>	GND CON <b>121.9 348.6</b>
-------------------------------	--	------------------------------------	-------------------------------



ELEV 684	<b>D</b>	TDZE 678
----------	----------	----------



	0.5	1.2 NM	3.6 NM	5.4 NM		
CATEGORY	A	B	C	D	E	
S-ILS 25*	878/24 200 (200-½)					
S-LOC 25	1000/24	322 (400-½)	1000/26	322 (400-½)		
CIRCLING	1200-1	516 (600-1)	1300-1¾ 616 (700-1¾)	1360-2¼ 676 (700-2¼)	1360-2½ 676 (700-2½)	

EC-2, 14 MAY 2026 to 11 JUN 2026

EC-2, 14 MAY 2026 to 11 JUN 2026