

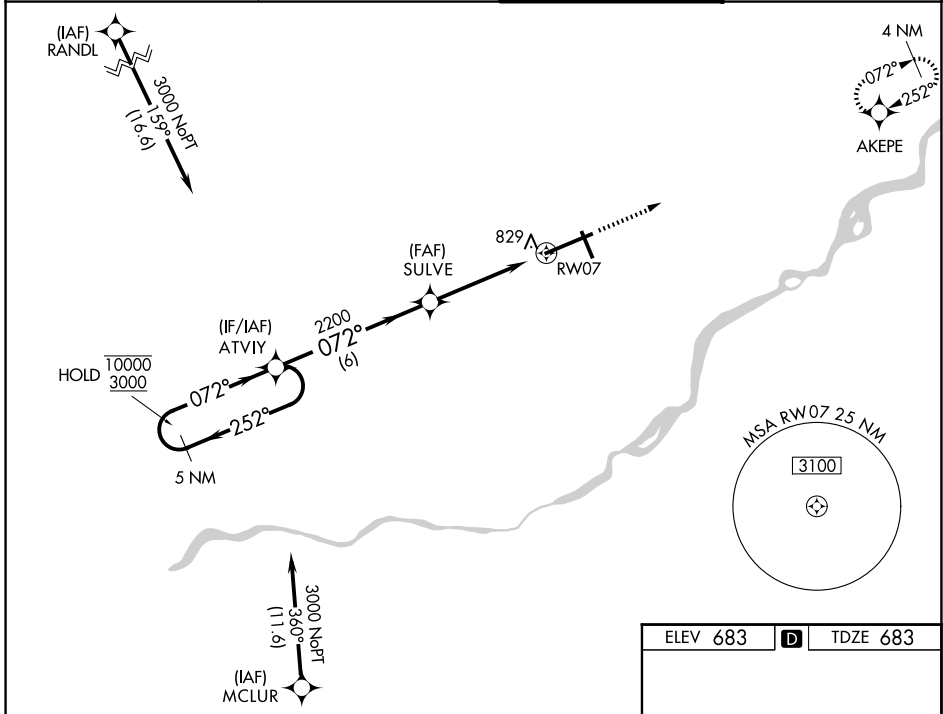
WAAS CH 99399 W07A	APP CRS 072°	Rwy Ldg TDZE Apt Elev 10599 683 683
--	------------------------	---

RNAV (GPS) RWY 7

EUGENE F KRANZ TOLEDO EXPRESS (TOL)

RNP APCH.	<p>T For uncompensated Baro-VNAV systems, LNAV/VNAV NA below -17°C or above 52°C. A For inop ALS, increase LPV all Cats visibility to RVR 5000. Increase LNAV/VNAV Cat E and LNAV Cat E visibility to 1½ SM. ASR</p>	ALSF-2 	MISSED APPROACH: Climb to 3000 direct AKEPE and hold.
-----------	--	------------	---

ATIS 118.75 290.225	TOLEDO APP CON 134.35 317.55	TOLEDO TOWER 118.1 285.4	GND CON 121.9 348.6
-------------------------------	--	------------------------------------	-------------------------------



5 NM Holding Pattern

ATVIY

10000 ← 252°
3000 → 072°

GP 3.00°
TCH 55

SULVE 2200

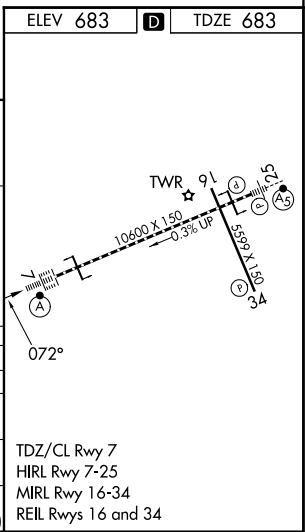
RW07

*LNAV only.

*1.3 NM to RW07

6 NM 3.2 NM 1.3

CATEGORY	A	B	C	D	E
LPV DA	1018/40 335 (400-¾)				
LNAV/VNAV DA	1129/50 446 (500-1)				
LNAV MDA	1140/24	457 (500-½)	1140/40 457 (500-¾)	1140/50	457 (500-1)
CIRCLING	1200-1	517 (600-1)	1300-1¾ 617 (700-1¾)	1360-2¼ 677 (700-2¼)	1360-2½ 677 (700-2½)



EC-2, 14 MAY 2026 to 11 JUN 2026

EC-2, 14 MAY 2026 to 11 JUN 2026