

HI-ILS or LOC Z RWY 26

LOC I-ABM 109.9	APCH CRS 258°	Rwy Idg 10,002
		TDZE 8
		Arprt Elev 8

[USAF]

LANGLEY AFB (KLF1)

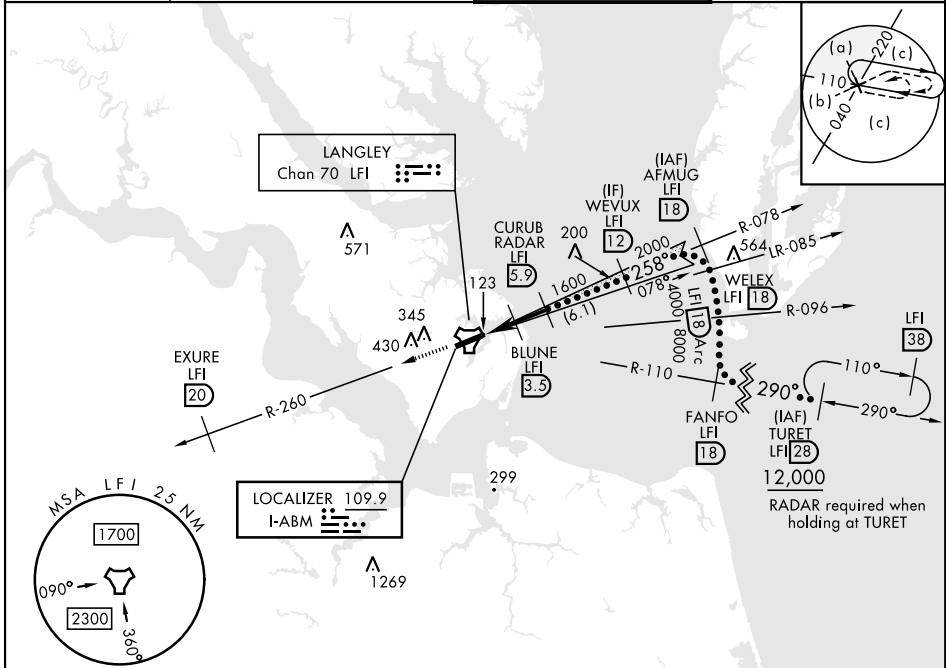
RADAR or DME required.

- ▼ *When ALS inop, increase RVR to 40, vis to 3/4 mile.
- **When ALS inop, increase RVR to 55, vis to 1 miles.
- ***Circling S of Rwy 8-26 not authorized.



MISSED APPROACH: Climb to 3000 on LFI TACAN R-260 to EXURE/20 DME, then as instructed by ATC.

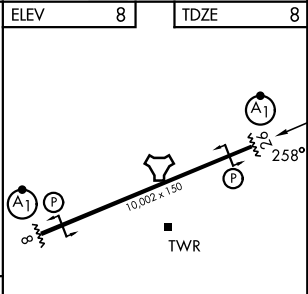
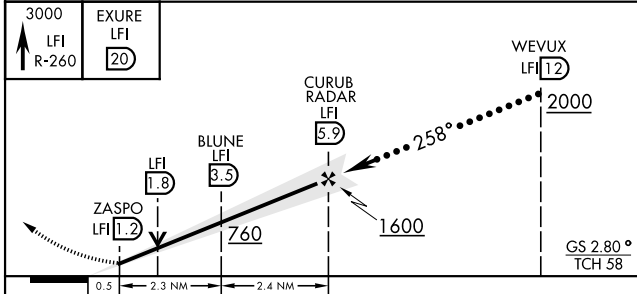
ATIS★ 270.1	NORFOLK APP CON 124.9 (311° - 009°) 126.05 (010° - 080°) 127.9 269.425 (180° - 310°)	TOWER★ 125.0 253.5	GND CON 121.7 275.8
-----------------------	--	------------------------------	-------------------------------



NE-3, 14 MAY 2026 to 11 JUN 2026

NE-3, 14 MAY 2026 to 11 JUN 2026

EMERG SAFE ALT 100 NM 4100



CATEGORY	C	D	E
S-ILS 26*	208/24	200	(200-1/2)
S-LOC 26**	380/35	372	(400-5/8)
CIRCLING ***	700-2 692 (700-2)	740-2 1/4 732 (800-2 1/4)	740-2 1/2 732 (800-2 1/2)

HIRL Rwy 8-26					
FAF to MAP 4.7 NM					
Knots	120	140	160	180	200
Min:Sec	2:21	2:01	1:46	1:34	1:25

HI-ILS or LOC Z RWY 26