

HI-ILS or LOC Z RWY 8

LOC I-LFI 109.9	APCH CRS 078°	Rwy Ildg 10,002	TDZE 8	Arprt Elev 8
---------------------------	-------------------------	--------------------	-----------	-----------------

[USAF]

LANGLEY AFB (KLFJ)

RADAR or DME required.

- ▼ * When ALS inop, increase RVR to 40 and vis to ½ mile.
- ** When ALS inop, increase vis to 1 ½ miles.
- *** Circling S of Rwy 8-26 not authorized.

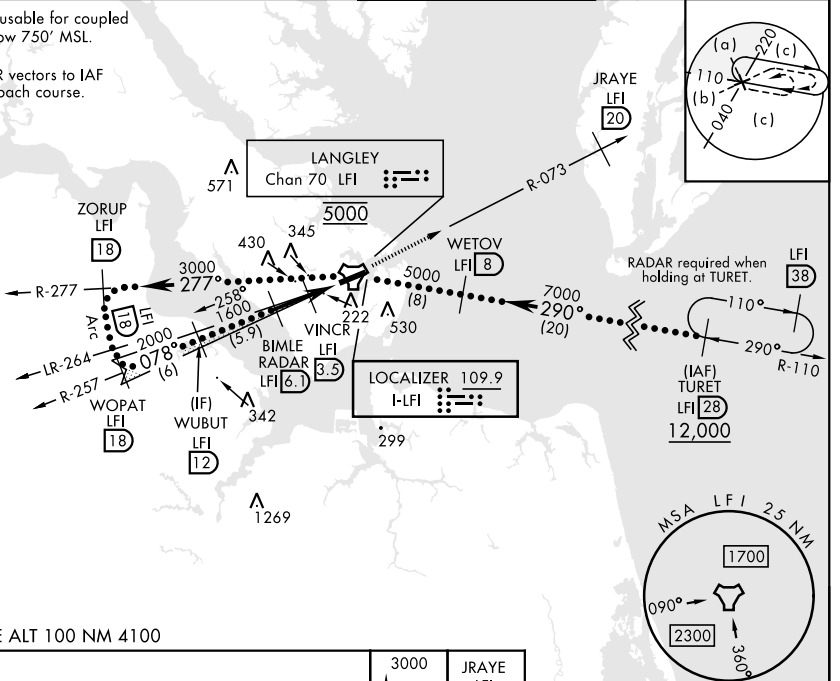


MISSED APPROACH: Climb to 3000 on LFI TACAN R-073 to JRAYE/20 DME, then as instructed by ATC.

ATIS★ 270.1	NORFOLK APP CON 124.9 (311° - 009°) 126.05 (010° - 080°) 127.9 269.425 (180° - 310°)	TOWER★ 125.0 253.5	GND CON 121.7 275.8
-----------------------	--	------------------------------	-------------------------------

Glideslope unusable for coupled approach below 750' MSL.

Expect RADAR vectors to IAF or Final Approach course.



NE-3, 14 MAY 2026 to 11 JUN 2026

NE-3, 14 MAY 2026 to 11 JUN 2026

EMERG SAFE ALT 100 NM 4100

WUBUT LFI 12 2000 GS 2.80° TCH 54 BIMLE RADAR LFI 6.1 VINC R LFI 3.5 ZOMPI LFI 1.4 1600 760 2.6 NM 2.1 NM 0.5	3000 JRAYE LFI 20 R-073	ELEV 8	TDZE 8
	CATEGORY C D E S-ILS 8* 208/24 200 (200-½) S-LOC 8** 480/50 472 (500-1) CIRCLING*** 700-2 740-2¼ 740-2½ 692 (700-2) 732 (800-2¼) 732 (800-2½)	HIRL Rwy 8-26 FAF to MAP 4.7 NM Knots 120 140 160 180 200 Min:Sec 2:21 2:01 1:46 1:34 1:25	TWR 078° 10,002 ± 150

HI-ILS or LOC Z RWY 8