


HI-TACAN Z RWY 26

TACAN Chan 70	LFI	APCH CRS 263°	Rwy Ldg 10,002
		TDZE 8	
		Arprt Elev 8	

[USAF]

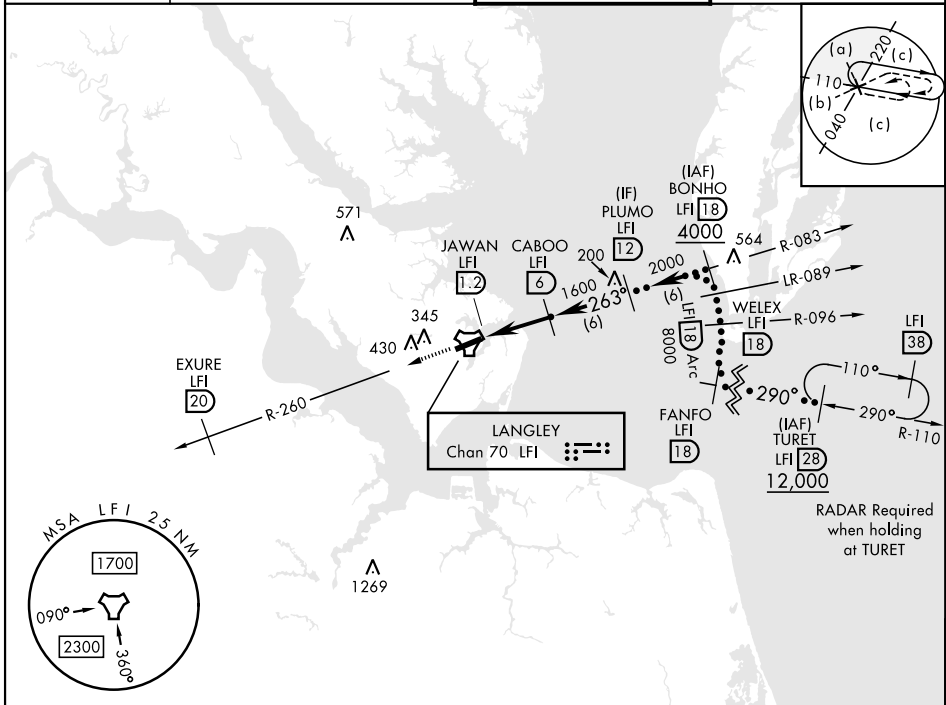
LANGLEY AFB (KLFJ)

▼ * When ALS inop, increase CAT CDE vis to 1½ miles.
 ** Circling S of Rwy 8-26 not authorized.

 ALSF-1


 MISSED APPROACH: Climb to 3000 via LFI TACAN
 R-260 to EXURE LFI 20 DME, then as instructed by ATC.

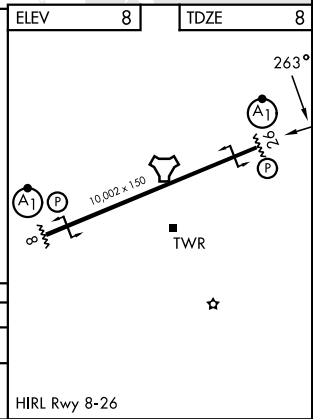
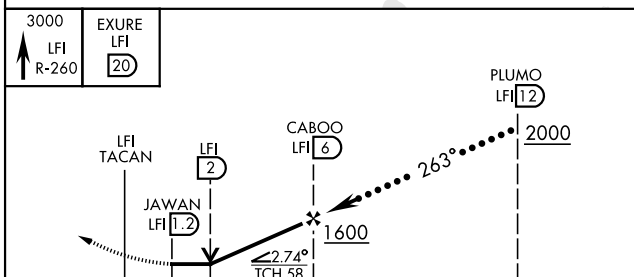
ATIS★ 270.1	NORFOLK APP CON 124.9 (311° - 009°) 126.05 (010° - 080°) 127.9 269.425 (180° - 310°)	TOWER★ 125.0 253.5	GND CON 121.7 275.8
-----------------------	--	------------------------------	-------------------------------



NE-3, 14 MAY 2026 to 11 JUN 2026

NE-3, 14 MAY 2026 to 11 JUN 2026

EMERG SAFE ALT 100 NM 4100



CATEGORY	C	D	E
S-26*	480/50	472	(500-1)
CIRCLING**	700-2 692 (700-2)	740-2 ¼ 732 (800-2¼)	740-2 ½ 732 (800-2½)

HIRL Rwy 8-26

HI-TACAN Z RWY 26