

# HI-TACAN Z RWY 8

TACAN LFI Chan <b>70</b>	APCH CRS <b>073°</b>	Rwy ldg <b>10,002</b> TDZE <b>8</b> Arprt Elev <b>8</b>
--------------------------	----------------------	---

[USAF]

LANGLEY AFB (KLFJ)

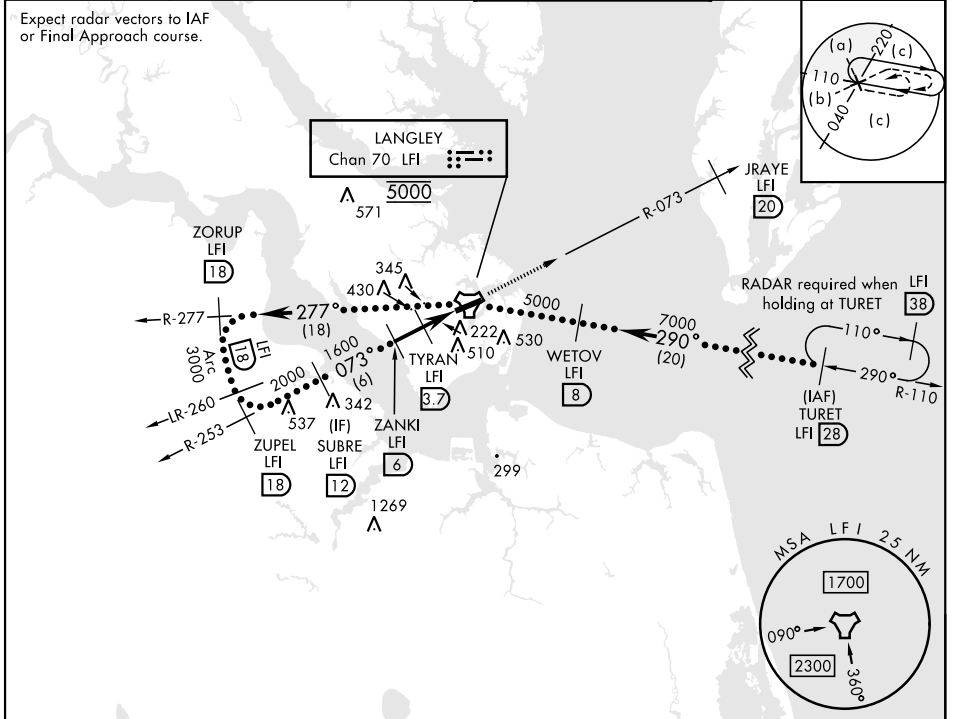
▼ \* When ALS inop, increase CAT CDE vis to 1 3/8 miles.  
 \*\* Circling S of Rwy 8-26 not authorized.



MISSED APPROACH: Climb to 3000 via LFI TACAN R-073 to JRAYE/20 DME, then as instructed by ATC.

ATIS★ <b>270.1</b>	NORFOLK APP CON <b>124.9</b> (311° - 009°) <b>126.05</b> (010° - 080°) <b>127.9</b> <b>269.425</b> (180° - 310°)	TOWER★ <b>125.0 253.5</b>	GND CON <b>121.7 275.8</b>
-----------------------	---	------------------------------	-------------------------------

Expect radar vectors to IAF or Final Approach course.



NE-3, 14 MAY 2026 to 11 JUN 2026

NE-3, 14 MAY 2026 to 11 JUN 2026

EMERG SAFE ALT 100 NM 4100

ELEV	8	TDZE	8
CATEGORY	C	D	E
S-8 *	480/50 472 (500-1)		
CIRCLING **	700-2 692 (700-2)	740-2 1/4 732 (800-2 1/4)	740-2 1/2 732 (800-2 1/2)
HIRL Rwy 8-26			

# HI-TACAN Z RWY 8