

ILS or LOC Y RWY 26

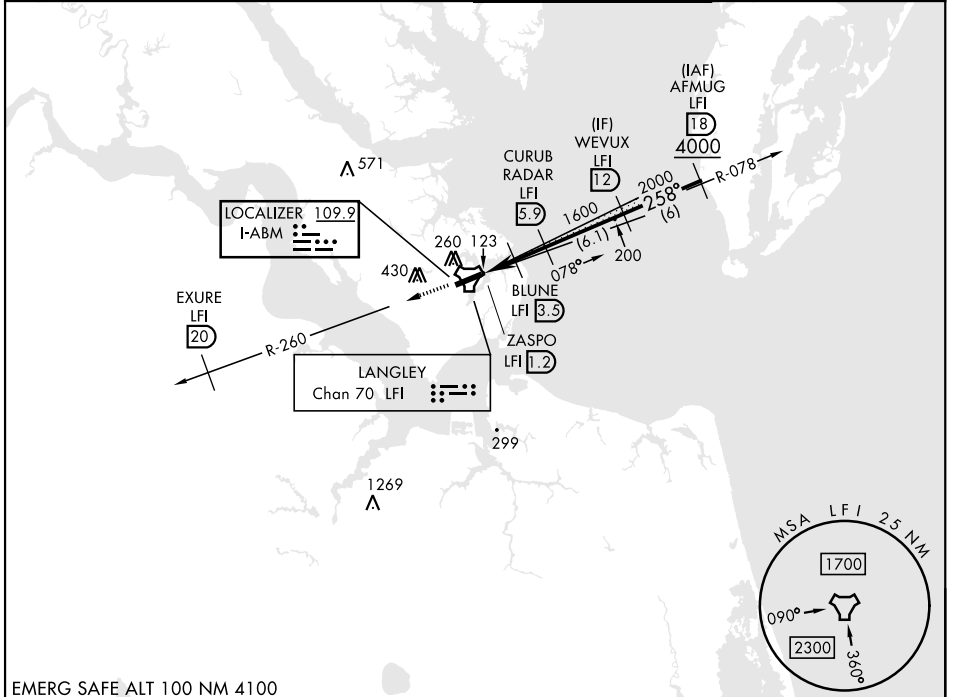
LOC I-ABM 109.9	APCH CRS 258°	Rwy Idg 10,002
		TDZE 8
		Arpt Elev 8

[USAF]

LANGLEY AFB (KLFJ)

RADAR or DME required		ALSF-1 	MISSED APPROACH: Climb to 3000 on LFI TACAN R-260 to EXURE LFI 20 DME, then as instructed by ATC.
* When ALS inop, increase RVR to 40 and vis to 3/4 miles. ** When ALS inop, increase RVR to 55 and vis to 1 mile. *** Circling S of Rwy 8-26 not authorized.			

ATIS★ 270.1	NORFOLK APP CON 124.9 (311° - 009°) 126.05 (010° - 080°) 127.9 269.425 (180° - 310°)	TOWER★ 125.0 253.5	GND CON 121.7 275.8
-----------------------	--	------------------------------	-------------------------------



NE-3, 14 MAY 2026 to 11 JUN 2026

NE-3, 14 MAY 2026 to 11 JUN 2026

EMERG SAFE ALT 100 NM 4100

3000 LFI R-260 EXURE LFI 20	AFMUG LFI 18 4000					ELEV 8	TDZE 8
CATEGORY	A	B	C	D	E	HIRL Rwy 8-26	
S-ILS 26**	208/24		200	(200-1/2)		FAF to MAP 4.7 NM	
S-LOC 26***	380/24	372 (400-1/2)	380/35	372	(400-5/8)		
CIRCLING ***	520-1	560-1	700-2	740-2 1/4	740-2 1/2		
	512 (600-1)	552 (600-1)	692 (700-2)	732 (800-2 1/4)	732 (800-2 1/2)		
						Knots	60 90 120 150 180
						Min:Sec	4:42 3:08 2:21 1:53 1:34

ILS or LOC Y RWY 26