

HAMPTON, VIRGINIA

RNAV (GPS) RWY 8

WAAS CH 41170 W08A	APCH CRS 078°	Rwy ldg TDZE Arprt Elev	10,002 8 8
--------------------------	------------------	-------------------------------	------------------

(USAF)

LANGLEY AFB (KLFJ)

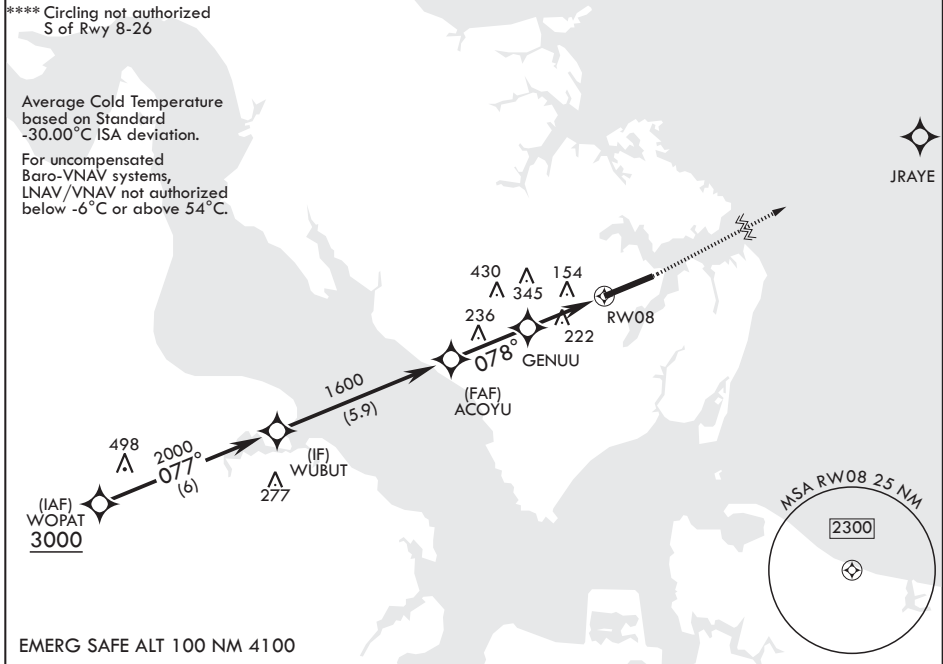
RNP APCH-GPS	ALSF-1	MISSED APPROACH: Climb to 600 then climbing to 3000 direct JRAYE, then as instructed by ATC.
<p>▼ * When ALS inop, increase RVR to 40, vis to 3/4 mile.</p> <p>** When ALS inop, increase vis to 1 3/8 miles.</p> <p>*** When ALS inop, increase CAT AB RVR to 55, vis to 1 mile; CAT CDE vis to 1 3/8 miles.</p>		

ATIS* 270.1	NORFOLK APP CON/DEP CON 124.9 (311°-009°) 126.05 (010°-080°) 127.9 269.425 (180°-310°)	TOWER* 125.0 253.5	GND CON 121.7 275.8
----------------	---	-----------------------	------------------------

**** Circling not authorized S of Rwy 8-26

Average Cold Temperature based on Standard -30.00°C ISA deviation.

For uncompensated Baro-VNAV systems, LNAV/VNAV not authorized below -6°C or above 54°C.



EMERG SAFE ALT 100 NM 4100

WUBUT	ACOYU	GENUU	RWY 08	JRAYE	ELEV 8	TDZE 8
2000	1600	800				
GP 2.80° TCH 53	077°	078°	1.4 NM to RWY 08			
	2.6 NM	2.6 NM				
CATEGORY	A	B	C	D	E	
LPV DA*	208/24		200	(200-½)		
LNAV/VNAV DA**	474/50		466	(500-1)		
LNAV MDA***	480/24	472 (500-½)	480/50	472	(500-1)	
CIRCLING****	520-1 512 (600-1)	560-1 552 (600-1)	700-2 692 (700-2)	740-2¼ 732 (800-2¼)	740-2½ 732 (800-2½)	HIRL all rwys

HAMPTON, VIRGINIA

37°05'N - 76°22'W

LANGLEY AFB (KLFJ)

Amdt 2 17APR25

RNAV (GPS) RWY 8

NE-3, 14 MAY 2026 to 11 JUN 2026

NE-3, 14 MAY 2026 to 11 JUN 2026