

TACAN Y RWY 26

TACAN LFI Chan 70	APCH CRS 263°	Rwy ldg 10,002 TDZE 8 Arprt Elev 8
--------------------------	----------------------	---

[USAF]

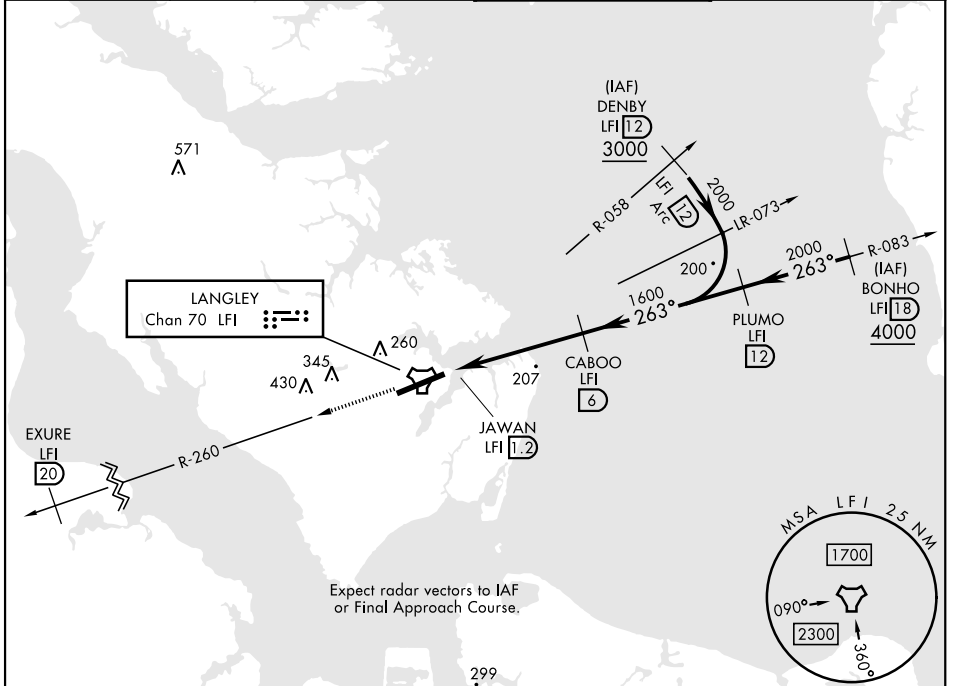
LANGLEY AFB (KLF1)

▼ *When ALS inop, increase CAT AB RVR to 55 and vis to 1 mile, CAT CDE vis to 1 3/8 miles.
 ** Circling not authorized S of Rwy 8-26.



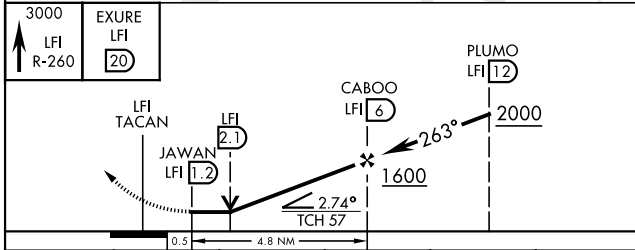
MISSED APPROACH: Climb to 3000 on LFI TACAN R-260 to EXURE LFI 20 DME, then as instructed by ATC.

ATIS★ 270.1	NORFOLK APP CON 124.9 (311° - 009°) 126.05 (010° - 080°) 127.9 269.425 (180° - 310°)	TOWER★ 125.0 253.5	GND CON 121.7 275.8
-----------------------	--	------------------------------	-------------------------------

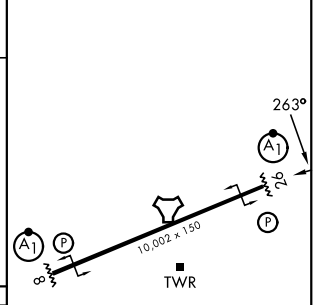


Expect radar vectors to IAF or Final Approach Course.

EMERG SAFE ALT 100 NM 4100



ELEV	8	TDZE	8
------	---	------	---



CATEGORY	A	B	C	D	E
S-26*	480/24	472 (500-1/2)	480/50	472 (500-1)	
CIRCLING **	520-1 512 (600-1)	560-1 552 (600-1)	700-2 692 (700-2)	740-2 1/4 732 (800-2 1/4)	740-2 1/2 732 (800-2 1/2)

HIRL Rwy 8-26

TACAN Y RWY 26

NE-3, 14 MAY 2026 to 11 JUN 2026

NE-3, 14 MAY 2026 to 11 JUN 2026