

HAMPTON, VIRGINIA

TACAN Y RWY 8

TACAN LFI Chan 70	APCH CRS 073°	Rwy ldg 10,002 TDZE 8 Arprt Elev 8
--------------------------	----------------------	---

[USAF]

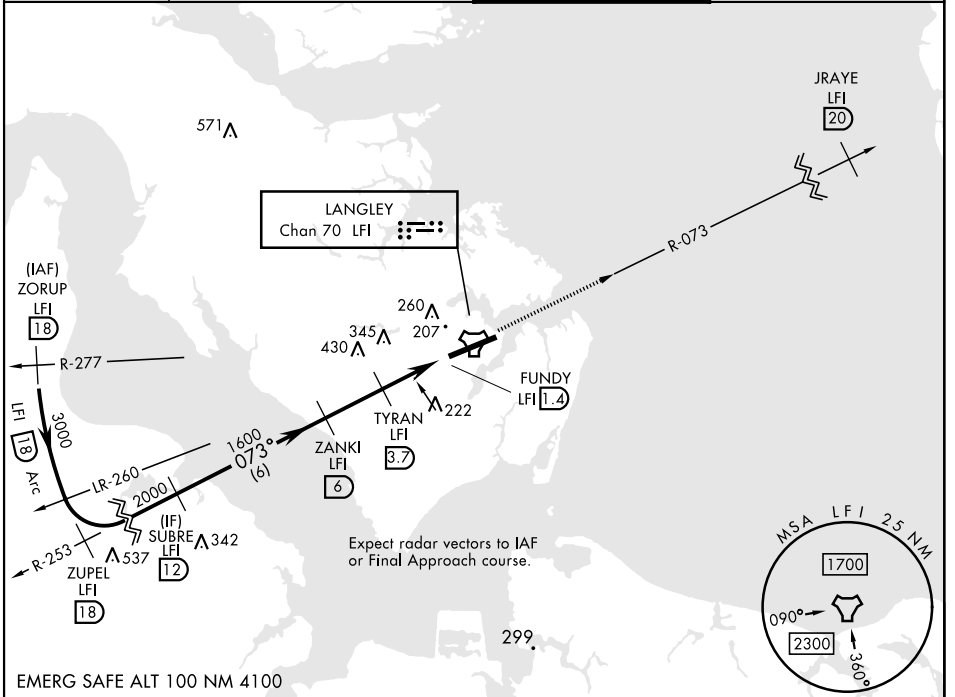
LANGLEY AFB (KLF1)

▼ *When ALS inop, increase CAT AB RVR to 55 and vis to 1 mile, CAT CDE vis to 1 3/8 miles.
 Circling not authorized S of Rwy 8-26.

ALSF-1

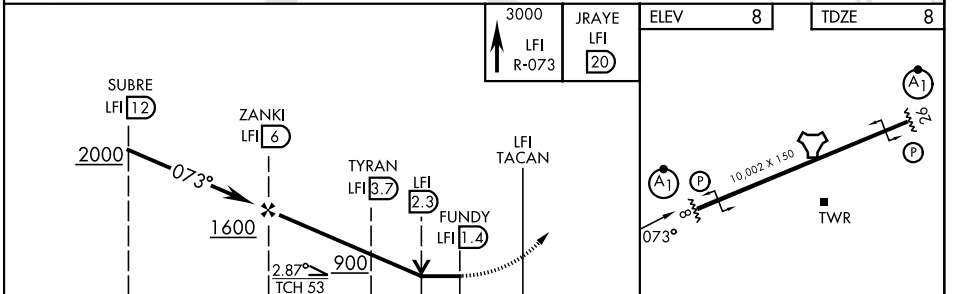
MISSED APPROACH: Climb to 3000 on LFI
 TACAN R-073 to JRAYE LFI 20 DME, then as instructed by ATC.

ATIS★ 270.1	NORFOLK APP CON 124.9 (311° - 009°) 126.05 (010° - 080°) 127.9 269.425 (180° - 310°)	TOWER★ 125.0 253.5	GND CON 121.7 275.8
-----------------------	--	------------------------------	-------------------------------



NE-3, 14 MAY 2026 to 11 JUN 2026

NE-3, 14 MAY 2026 to 11 JUN 2026



CATEGORY	A	B	C	D	E	
S-8*	480/24	472 (500-1/2)	480/50	472 (500-1)		
CIRCLING**	520-1 512 (600-1)	560-1 552 (600-1)	700-2 692 (700-2)	740-2 1/4 732 (800-2 1/4)	740-2 1/2 732 (800-2 1/2)	HIRL Rwy 8-26

HAMPTON, VIRGINIA
Amdt 7 17APR25

37°05'N-76°22'W

LANGLEY AFB (KLF1)

TACAN Y RWY 8