


LOC I-CXY 109.1	APP CRS 082°	Rwy Ldg TDZE Apt Elev	5000 342 347
---------------------------	------------------------	-----------------------------	---

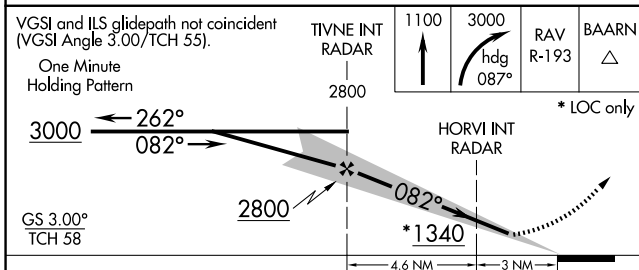
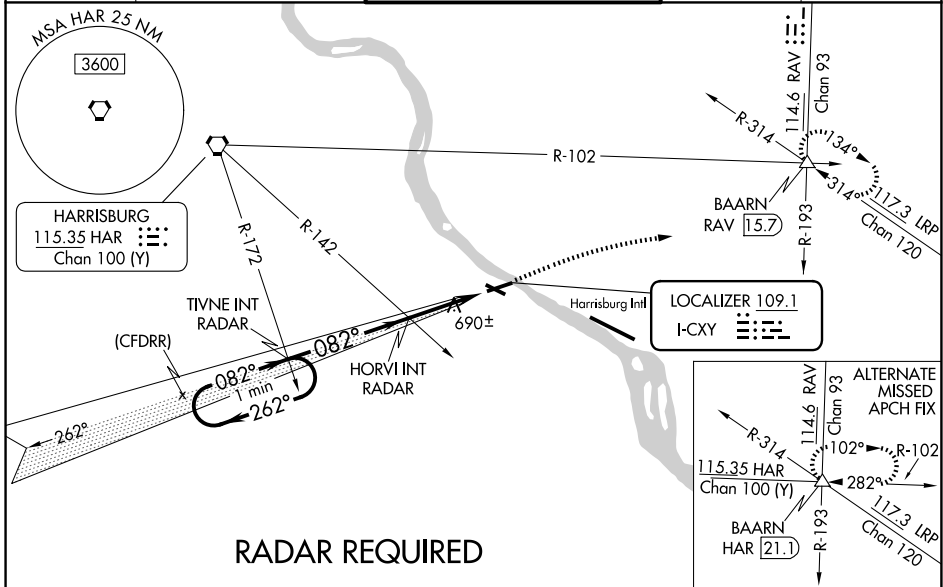
ILS or LOC RWY 8

CAPITAL CITY (CXY)



⚠ When local altimeter setting not received, use Harrisburg Intl altimeter setting. For inop MALS, increase S-ILS-8 all Cats visibility to 1¼ mile and S-LOC-8 Cat A and HORVI FIX minimums Cat A and B visibility to 1 mile. Night landing Rwy 12, 30 NA. Helicopter visibility reduction below ¾ SM NA.

MALS  MISSED APPROACH: Climb to 1100 then climbing right turn to 3000 on heading 087° and on RAV VORTAC R-193 to BAARN INT/RAV 15.7 DME and hold.

ATIS 134.95	HARRISBURG APP CON 124.1 273.525	CAPITAL CITY TOWER ★ 119.5 (CTAF) 0 257.8	GND CON 121.9	UNICOM 122.95
-----------------------	--	---	-------------------------	-------------------------



ELEV 347	TDZE 342
----------	----------

HIRL Rwy 8-26 
MIRL Rwy 12-30 

FAF to MAP 7.6 NM

Knots	60	90	120	150	180
Min:Sec	7:36	5:04	3:48	3:02	2:32

NE-4, 14 MAY 2026 to 11 JUN 2026

NE-4, 14 MAY 2026 to 11 JUN 2026