


# VOR RWY 31

HARRISBURG INTL (MDT)

VOR/DME LRP <b>117.3</b> Chan <b>120</b>	APP CRS <b>290°</b>	Rwy Ldg <b>8129</b> TDZE <b>308</b> Apt Elev <b>310</b>
--	------------------------	---

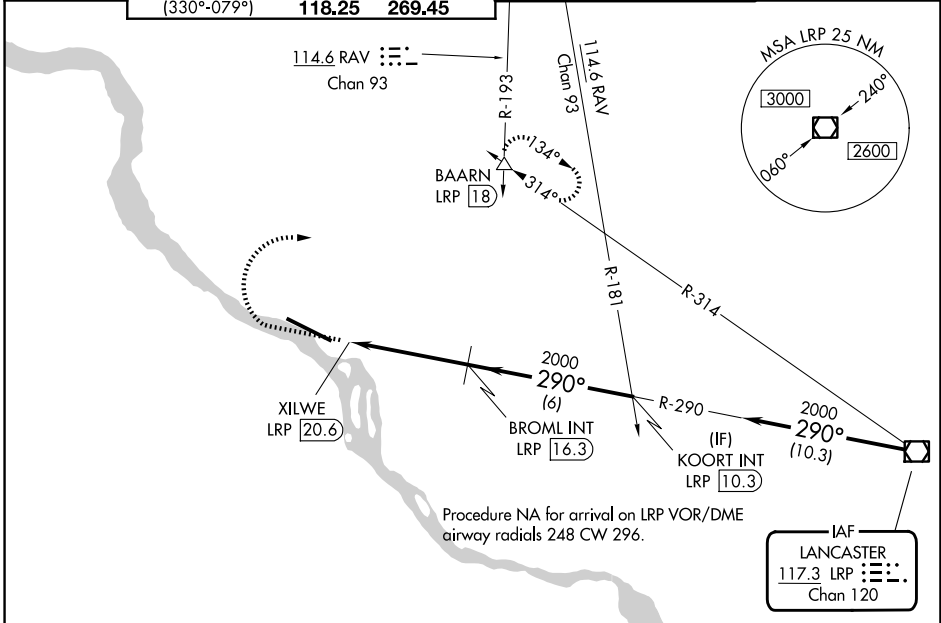
DME required.  

 Circling NA south of Rwy 13-31. Rwy 31 helicopter visibility reduction below 3/4 SM NA.  
 -16°C

MISSED APPROACH: Climb to 1500 then climbing right turn to 3000 on heading 090° and RAV VORTAC R-193 to BAARN INT/LRP 18 DME and hold.

ATIS <b>118.8</b>	HARRISBURG APP CON (080°-179°) <b>126.45 281.525</b> (180°-329°) <b>124.1 273.525</b> (330°-079°) <b>118.25 269.45</b>
----------------------	---

HARRISBURG INTL TOWER <b>124.8 269.35</b>
--

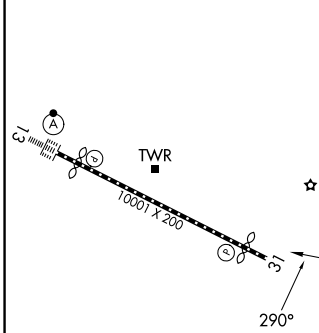
GND CON <b>121.7 348.6</b>
-------------------------------



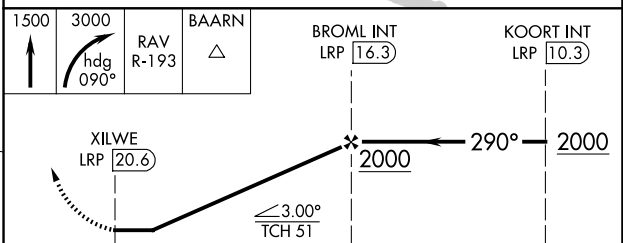
NE-4, 14 MAY 2026 to 11 JUN 2026

NE-4, 14 MAY 2026 to 11 JUN 2026

ELEV 310		TDZE 308
----------	---	----------



TDZ/CL Rwy 13 REL Rwy 31 HIRL Rwy 13-31
FAF to MAP 4.3 NM
Knots: 60 90 120 150 180
Min:Sec: 4:18 2:52 2:09 1:43 1:26



CATEGORY	A	B	C	D
S-31	1260-1 1/4 952 (1000-1 1/4)	1260-1 1/2 952 (1000-1 1/2)	1260-3	952 (1000-3)
CIRCLING	1260-1 1/4 950 (1000-1 1/4)	1260-1 1/2 950 (1000-1 1/2)	1260-3 950 (1000-3)	1440-3 1130 (1200-3)

# VOR RWY 31