

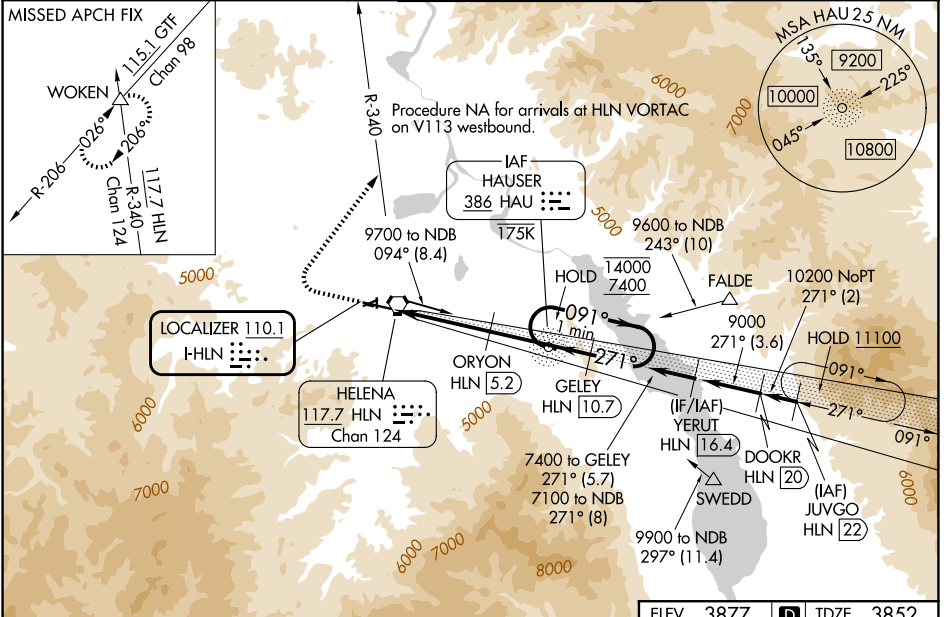
| | | |
|---------------------------|------------------------|-------------------------|
| LOC I-HLN 110.1 | APP CRS 271° | Rwy Ldg 9000 |
| | | TDZE 3852 |
| | | Apt Elev 3877 |

ILS Y or LOC Y RWY 27

HELENA RGNL (HLN)

| | | | |
|---|--|-----------|--|
| ADF or RADAR required for procedure entry. ADF or DME required. | | MALSR | MISSED APPROACH: Climb to 4700 then climbing right turn to 9300 on heading 021° and on HLN VORTAC R-340 to WOKEN INT and hold, continue climb-in-hold to 9300. |
| Circling NA to Rwys 10 and 28. Circling Rwy 5, 23, 35 NA at night. Inop table does not apply to S-LOC 27 all Cats. For inop ALS, increase S-ILS 27 all Cats visibility to 1½ SM, ORYON fix minimums: S-LOC 27 Cat C/D/E visibility to 2 SM. Holding at HAU NDB authorized for Cat A and B aircraft only. Circling NA for Cats D and E south of Rwy 9-27. *DME from HLN VORTAC. DME use requires simultaneous reception of I-HLN and HLN DME. | | | |

| | | | | |
|----------------------|--|---|-------------------------|-------------------------|
| ATIS 120.4 | HELENA APP CON * 119.5 229.4 | HELENA TOWER * 118.3 (CTAF) 0 257.8 | GND CON 121.9 | UNICOM 122.95 |
|----------------------|--|---|-------------------------|-------------------------|



| | | | | | | | | |
|---------------------|---------------------------|---------------------------|---------|----------------------------|-----------------|------|------|------|
| 4700 | 9300 | HLN | WOKEN | | | | | |
| | | HLN R-340 | | One Minute Holding Pattern | | | | |
| | | ORYON HLN [5.2] | HAU NDB | GELEY HLN [10.7] | 14000 | 7400 | 7400 | 7400 |
| 2.2 NM | | 3.3 NM | 3.3 NM | 2.3 NM | GS 3.00° TCH 55 | | | |
| CATEGORY | A | B | C | D | E | | | |
| S-ILS 27 | 4496-1¾ | | | 644 (700-1¾) | | | | |
| S-LOC 27 | 5640-1¼ 1788 (1800-1¼) | 5640-1½ 1788 (1800-1½) | 5640-3 | | 1788 (1800-3) | | | |
| CIRCLING | 5640-1¼ 1763 (1800-1¼) | 5640-1½ 1763 (1800-1½) | 6000-3 | | 2123 (2200-3) | | | |
| ORYON FIX MINIMUMS* | | | | | | | | |
| S-LOC 27 | 4600-½ 748 (800-½) | 4600-¾ 748 (800-¾) | 4600-1¾ | | 748 (800-1¾) | | | |
| CIRCLING | 4640-1 763 (800-1) | 4800-1¼ 923 (1000-1¼) | 6000-3 | | 2123 (2200-3) | | | |

| | | | | | |
|---|------|-----------|------|------|------|
| ELEV 3877 | | TDZE 3852 | | | |
| | | | | | |
| REIL Rwys 9, 17 and 35 MIRL Rwys 5-23 and 17-35 HIRL Rwy 9-27 | | | | | |
| FAF to MAP 8.7 NM | | | | | |
| Knots | 60 | 90 | 120 | 150 | 180 |
| Min:Sec | 8:42 | 5:48 | 4:21 | 3:29 | 2:54 |

NW-1, 14 MAY 2026 to 11 JUN 2026

NW-1, 14 MAY 2026 to 11 JUN 2026