

APP CRS	Rwy Ldg	9000
091°	TDZE	3864
	Apt Elev	3877

RNAV (RNP) Z RWY 9

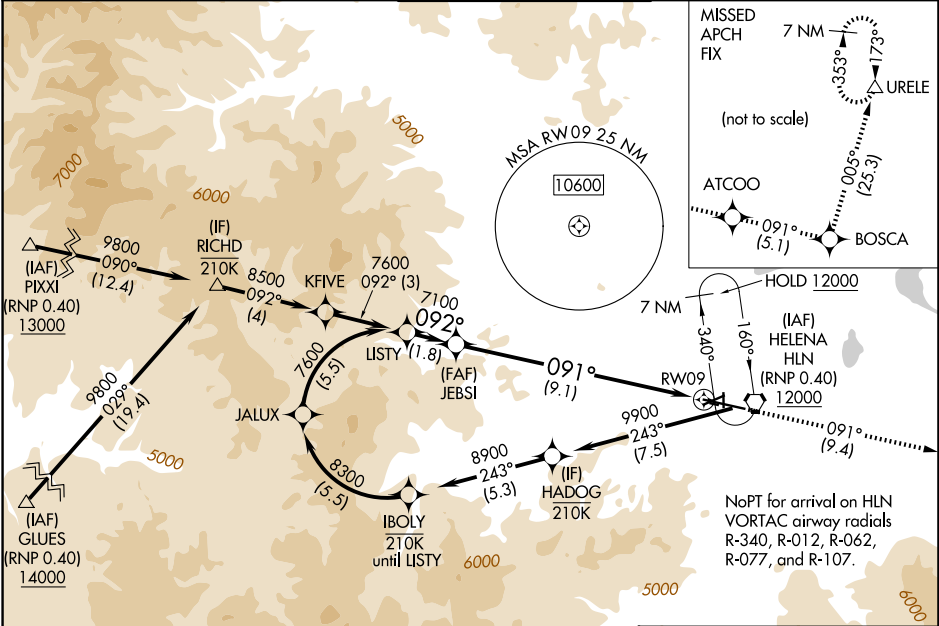
HELENA RGNL (HLN)

RNP AR APCH - GPS.

▽
✱ -16°C For uncompensated Baro-VNAV systems, procedure NA below -28°C or above 54°C.

MISSED APPROACH: Climb to 12000 on track 091° to ATCOO and on track 091° to BOSCA and on track 005° to URELE and hold.

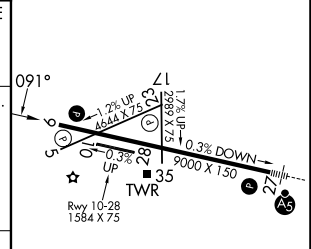
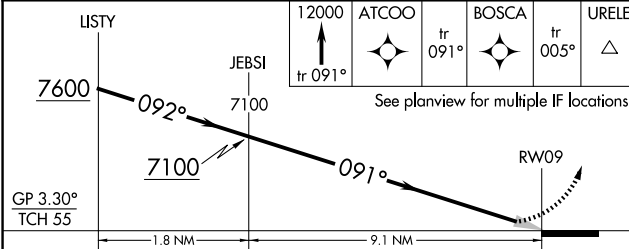
ATIS 120.4	HELENA APP CON * 119.5 229.4	HELENA TOWER * 118.3 (CTAF) 0 257.8	GND CON 121.9	UNICOM 122.95
----------------------	--	---	-------------------------	-------------------------



NW-1, 14 MAY 2026 to 11 JUN 2026

NW-1, 14 MAY 2026 to 11 JUN 2026

ELEV 3877	D TDZE 3864
-----------	--------------------



CATEGORY	A	B	C	D
RNP 0.11 DA		4224-1	360 (400-1)	
RNP 0.17 DA		4296-1¼	432 (500-1¼)	
RNP 0.30 DA		4489-1¾	625 (700-1¾)	

AUTHORIZATION REQUIRED

REIL Rwy 9, 17, and 35 **0**
 MIRL Rwy 5-23 and 17-35 **0**
 HIRL Rwy 9-27 **0**