

WAAS CH 66046 W23A	APP CRS 229°	Rwy Ldg TDZE Apt Elev	5015 489 489
--	------------------------	-----------------------------	---

RNAV (GPS) RWY 23

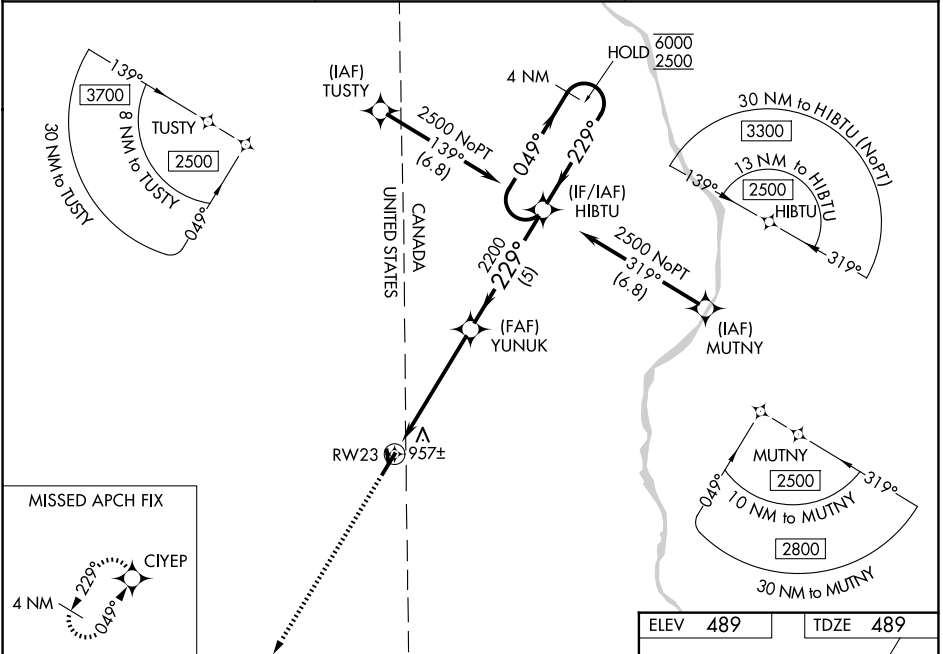
HOULTON INTL (HUL)

RNP APCH - GPS.

⚠ For uncompensated Baro-VNAV systems, LNAV/VNAV NA below -20°C or above 54°C. Rwy 23 helicopter visibility reduction below 3/4 SM NA. Circling Rwy 1, 19 NA at night. Circling NA for Cat C east of Rwy 5-23. Baro-VNAV and VDP NA when using PQI altimeter setting. When local altimeter setting not received, use PQI altimeter setting and increase LPV DA to 882 feet and all visibilities 1/2 SM. Increase LNAV/VNAV DA to 1387 feet and all visibilities 1/2 SM. Increase all MDAs 100 feet and LNAV visibility Cat B/C 1/2 SM, and Circling visibility Cat B/C 1/4 SM.

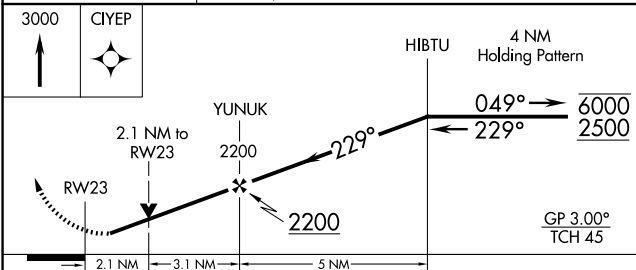
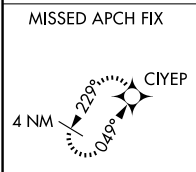
MISSED APPROACH:
Climb to 3000 direct
CIYEP and hold.

ASOS 132.025	BOSTON CENTER 120.25 346.4	UNICOM 122.8 (CTAF) 0
------------------------	--------------------------------------	---------------------------------

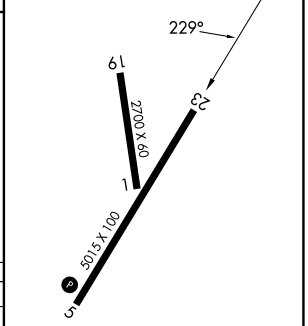


NE-1, 14 MAY 2026 to 11 JUN 2026

NE-1, 14 MAY 2026 to 11 JUN 2026



ELEV 489	TDZE 489
-----------------	-----------------



CATEGORY	A	B	C	D
LPV DA	796-1	307 (400-1)		NA
LNAV/VNAV DA	1301-2½	812 (900-2½)		NA
LNAV MDA	1220-1	731 (800-1)	1220-2 731 (800-2)	NA
CIRCLING	1320-1¼ 831 (900-1¼)	1400-1¼ 911 (1000-1¼)	1400-2¾ 911 (1000-2¾)	NA

MIRL Rwy 5-23 0
REIL Rws 5 and 23 0