

(BLTWY7.BLTWY) 21280

AL-197 (FAA)

ELLINGTON (EFD)

HOUSTON, TEXAS

BLTWY SEVEN DEPARTURE (RNAV)

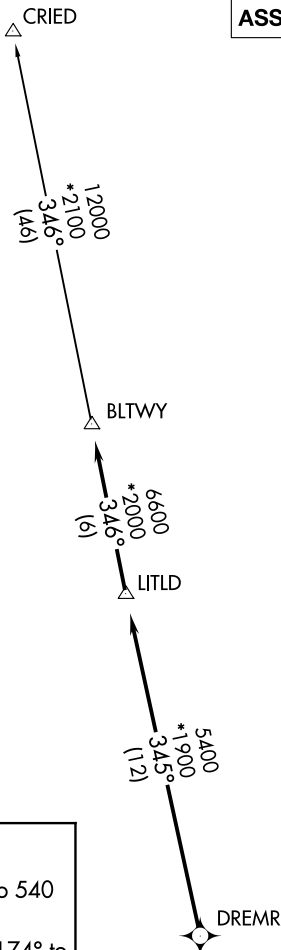
ATIS
 135.575 269.9
 GND CON
 121.6 275.8
 ELLINGTON TOWER
 126.05 253.5
 HOUSTON DEP CON
 134.45 284.0

**TOP ALTITUDE:
ASSIGNED BY ATC**

NOTE: RADAR required.
 NOTE: DME/DME/IRU or GPS required.
 NOTE: RNAV 1.

TAKEOFF MINIMUMS

Rwys 4, 17L/R, 22, 35L/R:
 Standard with minimum climb of 500' per NM to 540.



DEPARTURE ROUTE DESCRIPTION

TAKEOFF RUNWAY 4: Climb on heading 039° to 540 for RADAR vectors to DREMR, thence

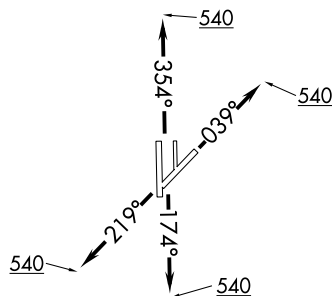
TAKEOFF RUNWAYS 17L/R: Climb on heading 174° to 540 for RADAR vectors to DREMR, thence

TAKEOFF RUNWAY 22: Climb on heading 219° to 540 for RADAR vectors to DREMR, thence

TAKEOFF RUNWAYS 35L/R: Climb on heading 354° to 540 for RADAR vectors to DREMR, thence

...on track 345° to LITLD, then on track 346° to BLTWY, then on (transition). Maintain ATC assigned altitude. Expect filed altitude 10 minutes after departure.

CRIED TRANSITION (BLTWY7.CRIED)



NOTE: Chart not to scale.

BLTWY SEVEN DEPARTURE (RNAV)

(BLTWY7.BLTWY) 07OCT21

HOUSTON, TEXAS
ELLINGTON (EFD)

SC-5, 14 MAY 2026 to 11 JUN 2026

SC-5, 14 MAY 2026 to 11 JUN 2026