

# HI-ILS Y or LOC Y RWY 22

LOC I-FNF <b>110.1</b>	APCH CRS <b>219°</b>	Rwy Idg TDZE Arprt Elev <b>8001</b> <b>31</b> <b>33</b>
---------------------------	-------------------------	--

AL-197 [USAF]

ELLINGTON (KEFD)

DME required. RADAR required for procedure entry.

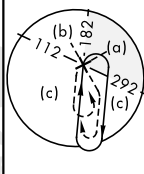


MISSED APPROACH: Climb to 700 then climbing left turn to 3100 on EFD TACAN R-136 to WATFO/EFD 16 DME and hold.

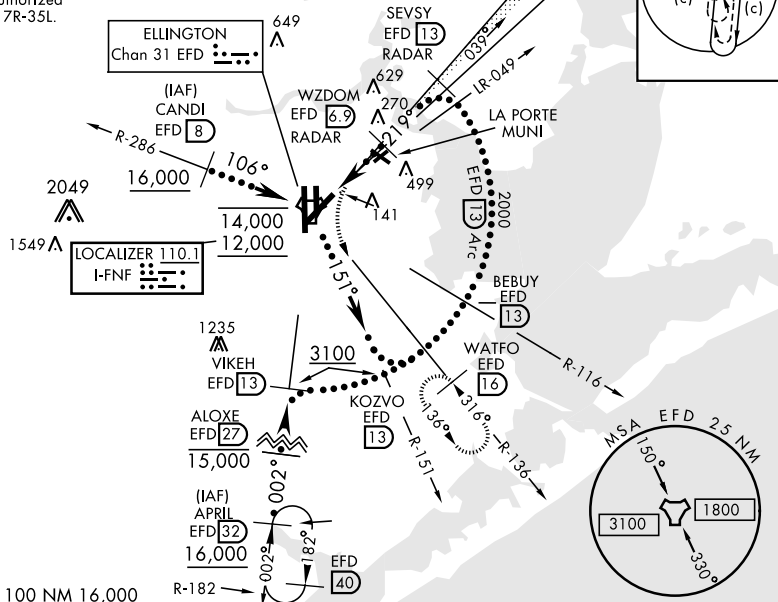
\* When ALS inop, increase CAT E RVR to 40.  
\*\* When ALS inop, increase CAT E vis to 1/2 mile.

ATIS <b>135.575 269.9</b>	HOUSTON APP CON <b>134.45 284.0</b>	TOWER <b>126.05 253.5</b>	GND CON <b>121.6 275.8</b>
------------------------------	--	------------------------------	-------------------------------

EFD TACAN	N29°36.36' W95°09.58'
CANDI	N29°39.24' W95°18.17'
APRIL	N29°04.53' W95°14.05'
WATFO	N29°23.90' W94°58.07'

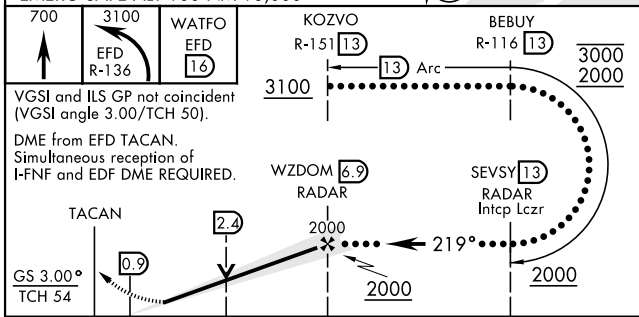


\*\*\* Circling not authorized West of Rwy 17R-35L.

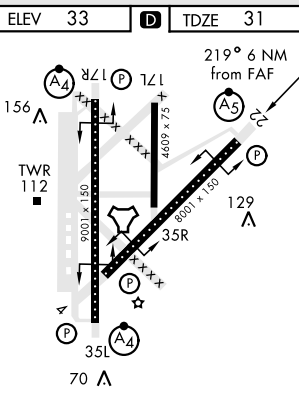


SC-5, 14 MAY 2026 to 11 JUN 2026

SC-5, 14 MAY 2026 to 11 JUN 2026



CATEGORY	C	D	E
S-ILS 22 *	231/24	200	(200-1/2)
S-LOC 22 **	560/55	529	(600-1)
<b>CIRCLING</b> ***	580-1 1/2 547 (600-1 1/2)	640-2 607 (700-2)	700-2 1/4 667 (700-2 1/4)



HIRL Rwy 4-22 and 17R-35L  
TDZL/CL Rwy 17R, 22 and 35L

# HI-ILS Y or LOC Y RWY 22