

LOC I-FNF 110.1	APP CRS 219°	Rwy Ldg 8001
		TDZE 31
		Apt Elev 33

ILS Z or LOC Z RWY 22

ELLINGTON (EFD)

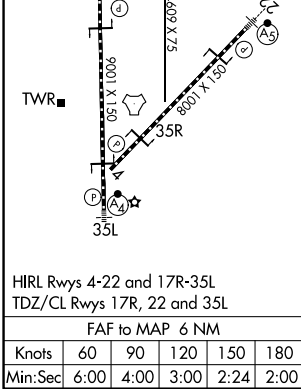
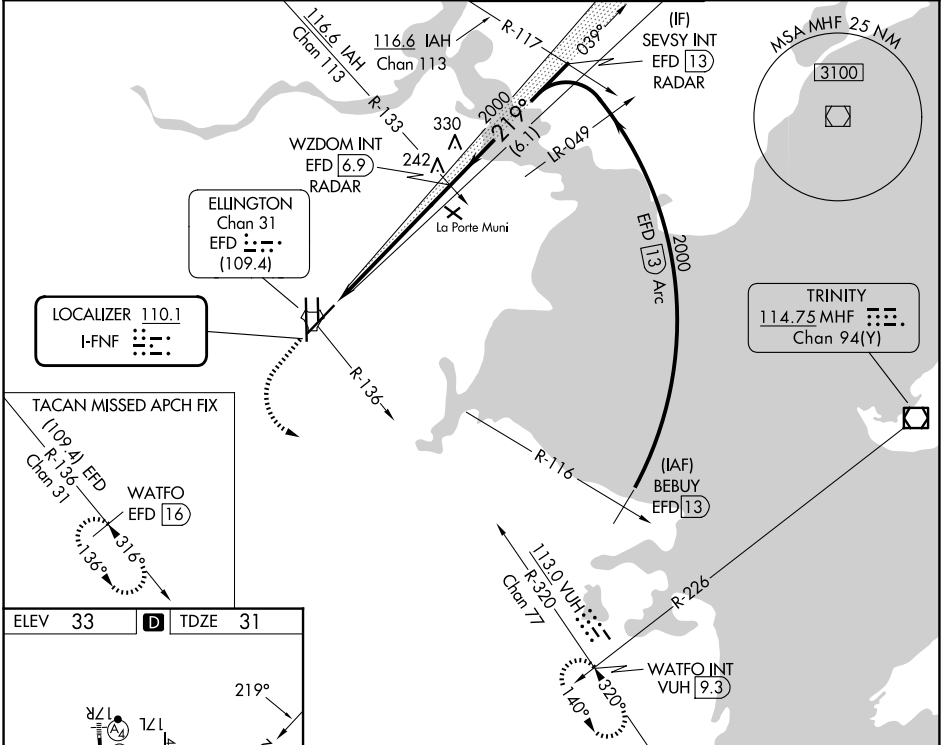
RADAR required for procedure entry.

⚠ Circling NA west of Rwy 17R-35L. DME from EFD TACAN. Simultaneous reception of I-FNF and EFD DME required. For inop ALS, increase S-ILS 22 Cat E visibility to RVR 4000 and S-LOC 22 Cat E visibility to 1½ SM.

MALSR

MISSED APPROACH: Climb to 700 then climbing left turn to 3100 on VUH VOR/DME R-320 to WATFO INT/VUH 9.3 DME and hold. (TACAN aircraft climb to 700 then climbing left turn to 3100 on EFD TACAN R-136 to WATFO/EFD 16 DME and hold southeast, left turn, 316° inbound.)

ATIS 135.575 269.9	HOUSTON APP CON 134.45 284.0	ELLINGTON TOWER 126.05 253.5	GND CON 121.6 275.8
------------------------------	--	--	-------------------------------



ELEV 33	D	TDZE 31			
700	3100	WATFO INT	WZDOM INT EFD 6.9 RADAR	SEVSY INT EFD 13 RADAR	
*LOC only. EFD 0.9	*EFD 2.4	2000	2000	2000	
VGSi and ILS glidepath not coincident (VGSi Angle 3.00/TCH 50). GS 3.00° TCH 54					
1.5 NM		4.5 NM		6.1 NM	
CATEGORY	A	B	C	D	E
S-ILS 22	231/18 200 (200-½)				
S-LOC 22	560/24	529 (600-½)	560/55	529 (600-1)	
CIRCLING	560-1	527 (600-1)	580-1½ 547 (600-1½)	640-2 607 (700-2)	700-2¼ 667 (700-2¼)

HIRL Rwy 4-22 and 17R-35L
TDZ/CL Rwy 17R, 22 and 35L
FAF to MAP 6 NM

Knots	60	90	120	150	180
Min:Sec	6:00	4:00	3:00	2:24	2:00

29°36'N-95°10'W

ELLINGTON (EFD)

ILS Z or LOC Z RWY 22

SC-5, 14 MAY 2026 to 11 JUN 2026

SC-5, 14 MAY 2026 to 11 JUN 2026