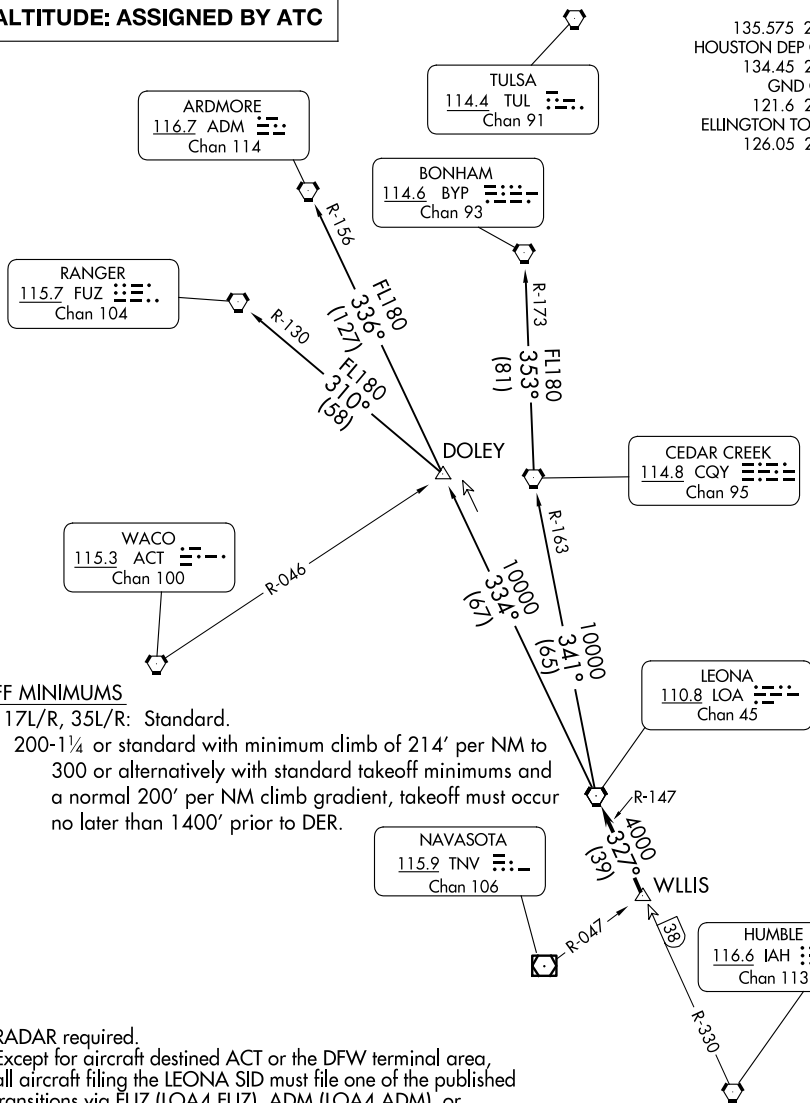


TOP ALTITUDE: ASSIGNED BY ATC

ATIS
135.575 269.9
HOUSTON DEP CON
134.45 284.0
GND CON
121.6 275.8
ELLINGTON TOWER
126.05 253.5



TAKEOFF MINIMUMS

Rwys 4, 17L/R, 35L/R: Standard.

Rwy 22: 200-1¼ or standard with minimum climb of 214' per NM to 300 or alternatively with standard takeoff minimums and a normal 200' per NM climb gradient, takeoff must occur no later than 1400' prior to DER.

NOTE: RADAR required.

NOTE: Except for aircraft destined ACT or the DFW terminal area, all aircraft filing the LEONA SID must file one of the published transitions via FUZ (LOA4.FUZ), ADM (LOA4.ADM), or BYP (LOA4.BYP).

NOTE: RANGER TRANSITION: For aircraft overflying west/northwest of the DFW terminal area FL240 and above.

NOTE: ARDMORE TRANSITION: For aircraft overflying north/northwest of the DFW terminal area FL240 and above.

NOTE: BONHAM TRANSITION: For aircraft overflying/landing TUL VORTAC FL240 and above.



NOTE: Chart not to scale.

(CONTINUED ON FOLLOWING PAGE)



DEPARTURE ROUTE DESCRIPTION

TAKEOFF ALL RUNWAYS: Climb on assigned heading for RADAR vectors to WLLIS INT. Maintain ATC assigned altitude. Expect filed altitude 10 minutes after departure, thence

. . . . on LOA R-147 to LOA VORTAC.

ARDMORE TRANSITION (LOA4.ADM): From over LOA VORTAC on LOA R-334 to DOLEY INT, then on ADM R-156 to ADM VORTAC.

BONHAM TRANSITION (LOA4.BYP): From over LOA VORTAC on LOA R-341 and CQY R-163 to CQY VORTAC, then on BYP R-173 to BYP VORTAC.

RANGER TRANSITION (LOA4.FUZ): From over LOA VORTAC on LOA R-334 to DOLEY INT, then on FUZ R-130 to FUZ VORTAC.

SC-5, 14 MAY 2026 to 11 JUN 2026

SC-5, 14 MAY 2026 to 11 JUN 2026