

LUFKIN FOUR DEPARTURE

HOUSTON DEP CON
134.45 284.0
ATIS
135.575 269.9
GND CON
121.6 275.8
ELLINGTON TOWER
126.05 253.5

**TOP ALTITUDE:
ASSIGNED BY ATC**

LITTLE ROCK
115.1 LIT ::::
Chan 98

RADAR and DME required.

NOTE: For aircraft destined LIT or overflying LIT or PXV.

TAKEOFF MINIMUMS

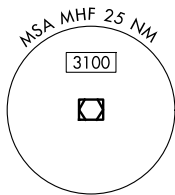
Rwys 4, 17L/R, 35L/R: Standard.
Rwy 22: 300-1¼ or standard with minimum
climb of 220'/NM to 300 or
alternatively with standard takeoff
minimums and a normal 200'/NM
climb gradient, takeoff must occur
no later than 1500' prior to DER.

LUFKIN
112.1 LFK ::::
Chan 58

HUMBLE
116.6 IAH ::::
Chan 113

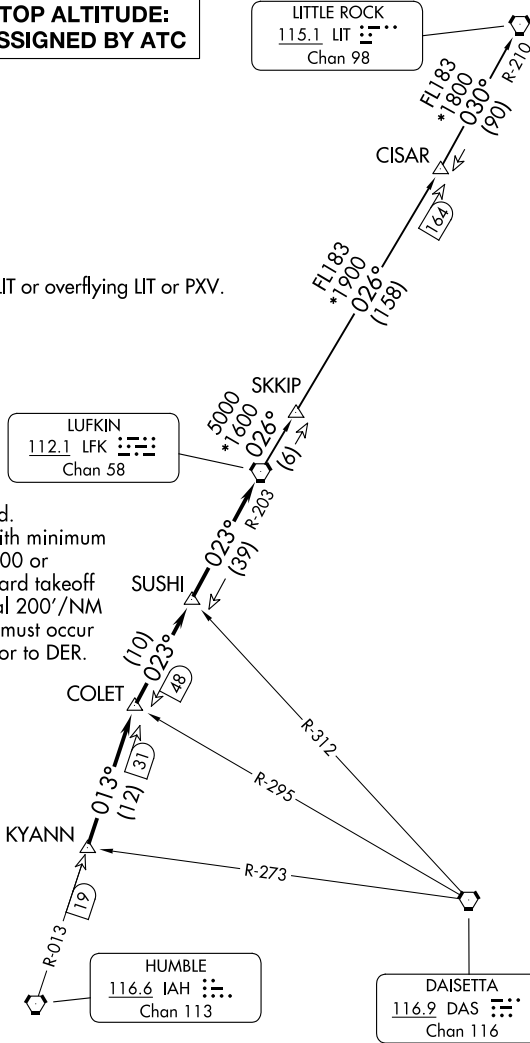
DAISETTA
116.9 DAS ::::
Chan 116

SMITH POINT
114.75 MHF ::::
Chan 94(Y)



NOTE: Chart not to scale.

(CONTINUED ON FOLLOWING PAGE)



SC-5, 14 MAY 2026 to 11 JUN 2026

SC-5, 14 MAY 2026 to 11 JUN 2026

LUFKIN FOUR DEPARTURE

LUFKIN FOUR DEPARTURE



DEPARTURE ROUTE DESCRIPTION

TAKEOFF ALL RUNWAYS: Climb on assigned heading for RADAR vectors to KYANN INT. Maintain ATC assigned altitude. Expect filed altitude 10 minutes after departure, thence. . .

. . .on IAH R-013 to COLET INT, then on depicted route to LFK VORTAC.

LITTLE ROCK TRANSITION (LFK4.LIT): From over LFK VORTAC on LFK R-026 to CISAR, then on LIT R-210 to LIT VORTAC.

SC-5, 14 MAY 2026 to 11 JUN 2026

SC-5, 14 MAY 2026 to 11 JUN 2026