

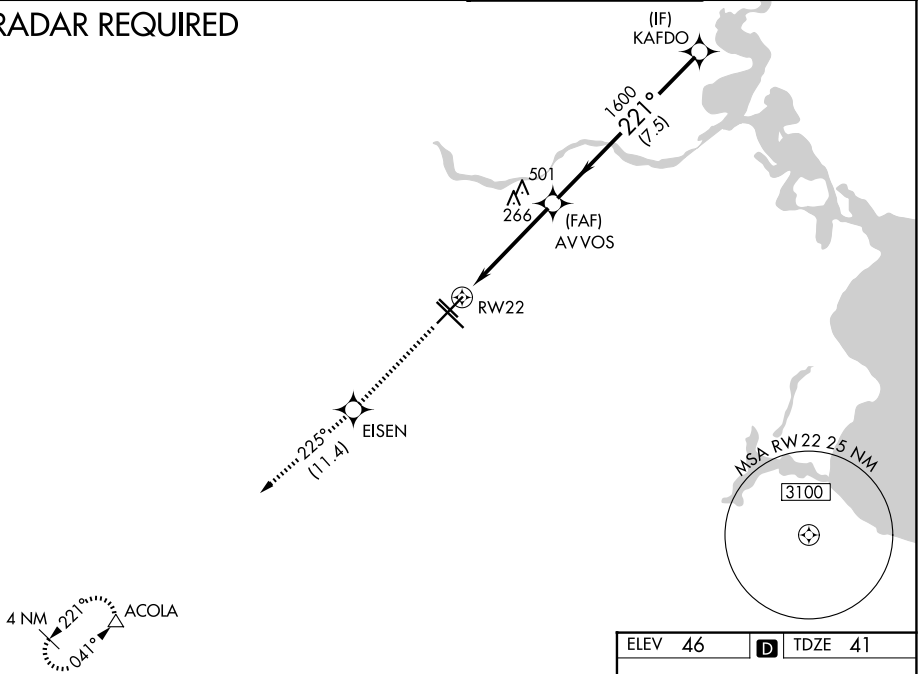
WAAS CH 65610 W22A	APP CRS 221°	Rwy Ldg 7602 TDZE 41 Apt Elev 46
--	------------------------	---

RNAV (GPS) RWY 22

WILLIAM P HOBBY (HOU)

RNP APCH ▽ Inop table does not apply to LPV, LNAV/VNAV all Cats, and LNAV Cat C. For uncompensated Baro-VNAV systems, LNAV/VNAV NA below -15°C (5°F) or above 48°C (118°F). ▲		MALS (A) —	MISSED APPROACH: Climb to 3000 direct EISEN and on track 225° to ACOLA and hold.
D-ATIS 124.6	HOUSTON APP CON 120.05 379.1 (E) 124.35 316.15 (W)	HOBBY TOWER 118.7 256.9	GND CON 121.9

RADAR REQUIRED



SC-5, 14 MAY 2026 to 11 JUN 2026

SC-5, 14 MAY 2026 to 11 JUN 2026

3000	EISEN	225° tr	ACOLA	KAFDO	
*LNAV only.	*1.5 NM to RW22				
RW22	AVVOS	1600	221°	2000	
GP 3.00°		1600		TCH 52	
	1.5 NM	3.2 NM	7.5 NM		
CATEGORY	A	B	C	D	E
LPV DA	360-1		319 (400-1)		
LNAV/VNAV DA	480-1½		439 (500-1½)		
LNAV MDA	580-¾	539 (600-¾)	580-1½ 539 (600-1½)	580-1¾ 539 (600-1¾)	580-2 539 (600-2)
CIRCLING	580-1	534 (600-1)	580-1½ 534 (600-1½)	740-2¼ 694 (700-2¼)	820-2¾ 774 (800-2¾)

