

WAAS CH <b>77510</b> <b>W31A</b>	APP CRS <b>311°</b>	Rwy Ldg <b>7602</b> TDZE <b>43</b> Apt Elev <b>46</b>
--	------------------------	---

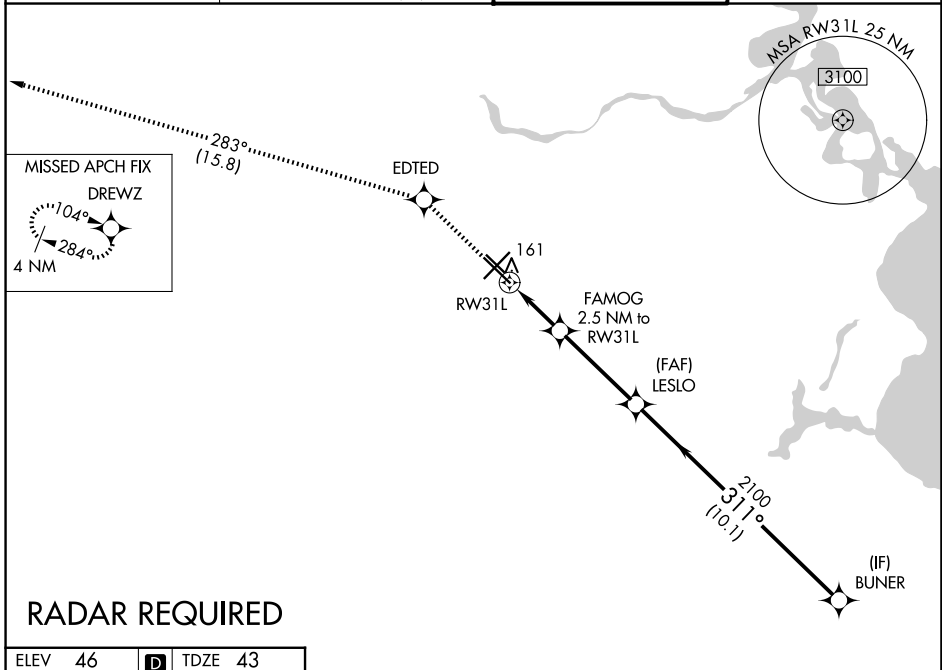
# RNAV (GPS) RWY 31L

WILLIAM P HOBBY (HOU)

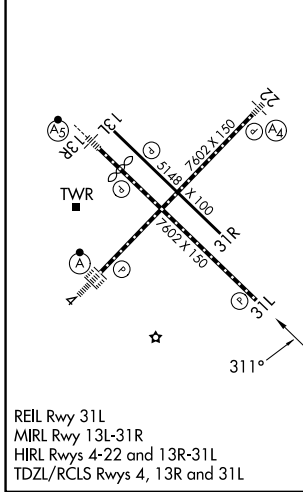
**⚠** For uncompensated Baro-VNAV systems, LNAV/VNAV NA below -1.5°C (5°F) or above 43°C (109°F).  
DME/DME RNP-0.3 NA.

MISSED APPROACH: Climb to 2000 direct EDTED and on track 283° to DREWZ and hold.

D-ATIS <b>124.6</b>	HOUSTON APP CON <b>120.05 379.1 (E)</b> <b>124.35 316.15(W)</b>	HOBBY TOWER <b>118.7 256.9</b>	GND CON <b>121.9</b>
------------------------	---	-----------------------------------	-------------------------



ELEV 46	<b>D</b>	TDZE 43
---------	----------	---------



2000	EDTED	DREWZ	VGSI and RNAV glidepath not coincident (VGSI Angle 3.00/TCH 76).	
↑	✧	tr 283°	BUNER 4000	
*LNAV only.			GP 3.00° TCH 58	
FAMOG 2.5 NM to RWY 31L			LESLO 2100	
*1.2 NM to RWY 31L			2100	
RWY 31L			880	
1.2 NM 1.3			3.8 NM 10.1 NM	
CATEGORY	A	B	C	D
LPV DA	243/40		200 (200-¾)	
LNAV/VNAV DA	323/45		280 (300-⅞)	
LNAV MDA	500/55	457 (500-1)	500-1⅜	457 (500-1⅜)
CIRCLING	500-1 454 (500-1)	520-1 474 (500-1)	740-2¼	694 (700-2¼)

SC-5, 14 MAY 2026 to 11 JUN 2026

SC-5, 14 MAY 2026 to 11 JUN 2026