

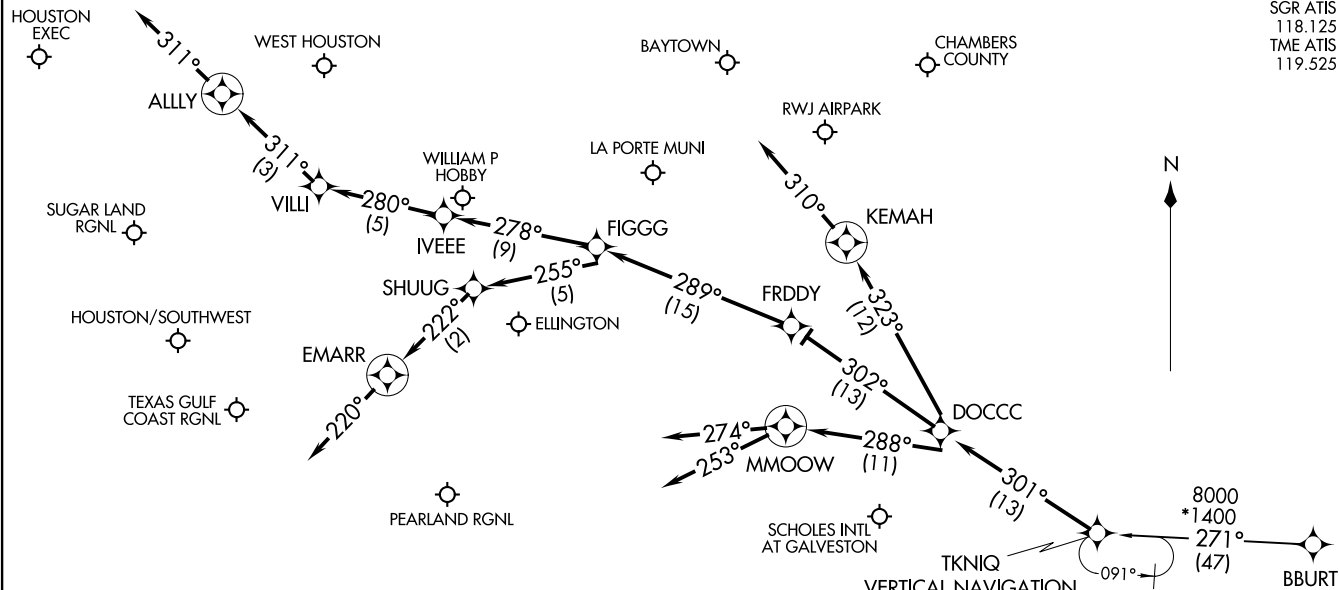
RNAV 1 - DME/DME/IRU or GPS.  
RADAR required.

HOUSTON APP CON  
119.625 226.675  
EFD ATIS  
135.575 269.9  
HOU D-ATIS  
124.6  
SGR ATIS  
118.125  
TME ATIS  
119.525

TKNIQ THREE ARRIVAL (RNAV)  
(TKNIQ.TKNIQ3) 07OCT21

(TKNIQ.TKNIQ3) 25051  
TKNIQ THREE ARRIVAL (RNAV)

AI-198 (FAA)



NOTE: Turbojet and turboprop aircraft only.  
NOTE: ATC assigned only for aircraft landing HOU.

VERTICAL NAVIGATION  
PLANNING INFORMATION  
HOU TURBOJET: Expect 12000 250K  
SOUTH SATELLITE TURBOJET: Expect 12000 280K

(CONTINUED ON FOLLOWING PAGE)

NOTE: Chart not to scale.

HOUSTON, TEXAS

HOUSTON, TEXAS

ARRIVAL ROUTE DESCRIPTION

BBURT TRANSITION (BBURT.TKNIQ3)

From TKNIQ on track 301° to DOCCC.

LANDING HOU RUNWAY 4: From DOCCC on track 302° to FRDDY, then on track 289° to FIGGG, then on track 255° to SHUUG, then on track 222° to EMARR, then on track 220°. Expect RADAR vectors to final approach course.

LANDING HOU RUNWAYS 13L/R: From DOCCC on track 302° to FRDDY, then on track 289° to FIGGG, then on track 278° to IVEEE, then on track 280° to VILLI, then on track 311° to ALLY, then on track 311°. Expect RADAR vectors to final approach course.

LANDING HOU RUNWAY 22: From DOCCC on track 323° to KEMAH, then on track 310°. Expect RADAR vectors to final approach course.

LANDING HOU RUNWAYS 31L/R: From DOCCC on track 288° to MMOOW, then on track 274°. Expect RADAR vectors to final approach course.

LANDING AXH, EFD, GLS, HPY, IWS, LBX, LVJ, SGR, TME, TØØ, T41, 54T:  
From DOCCC on track 288° to MMOOW, then on track 253°. Expect RADAR vectors to final approach course.

SC-5, 14 MAY 2026 to 11 JUN 2026

SC-5, 14 MAY 2026 to 11 JUN 2026